

GATES INDUSTRIAL FLUID POWER

ADAPTOR CATALOGUE

CATALOG NO. 50155

EDITION 2024

SUPERSEDES 50155 (2012)



DRIVEN BY POSSIBILITY™

A woman with dark curly hair tied up, wearing a dark blue polo shirt, is focused on a task in a laboratory or office. She is leaning over a desk, looking down at a small device or document. The background shows industrial equipment and a control panel with many buttons and lights.

OUR VISION

**“CONTINUALLY PUSH
THE BOUNDARIES OF
MATERIALS SCIENCE TO
ADVANCE THE WAY THE
WORLD MOVES.”**



TABLE OF CONTENTS

INTRODUCTION

THE MISSING LINK IN THE HYDRAULIC CIRCUIT	
YOUR TOTAL FLUID POWER SOLUTION	2

THE GATES ADAPTOR PROGRAMME SUPPORTING TRUSTWORTHY SOLUTIONS FROM PORT TO PORT	
TRUSTWORTHY SOLUTIONS FROM PORT TO PORT	3

PROTECT YOUR INVESTMENT	
CORROSION OR METALLIC OXIDATION	4

EVOLVE WITH GATES	
GATES SAFE HYDRAULICS: THINK SAFETY!	5
GATES ONE-STOP-SHOP	6

HOW TO ORDER	
HOW TO ORDER	8
GATES PART NUMBER ABBREVIATIONS	10
EXPLANATION OF ORDERING EXAMPLES	11

ADAPTORS

BSP ADAPTORS

BSP MBSPP-MBSPP EQUAL	14
BSP MBSPP-MBSPP UNEQUAL	15
BSP MBSPP-MBSPPWD	16
BSP MBSPP-MBSPPBKHD	17
BSP MBSPP-MBSPT	18
BSP MBSPP-MB	19
BSP MBSPP-MM	20
BSP MBSPP-MP	21
BSP MBSPP-MJIS (BSP)	21
BSP MBSPP-FBSPPX	22
BSP MBSPP-FBSPPX-W/N	23
BSP FBSPPX-FBSPPX	24
BSP FBSPP-FBSPP	25
BSP MBSPP-MBSPP90BL	25
BSP MBSPP-MBSPPACOR90	26
BSP MBSPP-MBSPPACOR45	26
BSP MBSPP-FBSPPX90BL	27
BSP MBSPP-FBSPPX90BL-W/N	27
BSP MBSPP-FBSPPX45BL	28
BSP FBSPPX-FBSPPX90BL	28
BSP MBSPP-FBSPPX90SWT	29
BSP FBSPPX-FBSPPX90SWT	29
BSP MBSPP-MBSPP-MBSPP	30
BSP MBSPP-FBSPPX-MBSPP	30
BSP MBSPP-MBSPP-FBSPPX	31
BSP FBSPPX-FBSPPX-FBSPPX	31
BSP MBSPP-FBSPPX-FBSPPX	32

BSP FBSPPX-FBSPPX-MBSPP	32
BSP MBSPP-PLUG	33
BSP MBSPT-PLUG	33
BSP FBSPPX-CAP	34
BSP LOCKNUT	34

JIC ADAPTORS

JIC MJ-MMWD	38
JIC MJ-MMWD LONG	38



THE MISSING LINK IN THE HYDRAULIC CIRCUIT

WITH THE ADDITION OF THE BSP, JIC & ORFS ADAPTOR RANGE, GATES HAS TAKEN ITS INTEGRATED APPROACH TO THE NEXT LEVEL WHERE HOSES, COUPLINGS, TUBE FITTINGS AND ADAPTORS ARE DESIGNED TOGETHER FOR OPTIMAL PERFORMANCE.

YOUR TOTAL FLUID POWER SOLUTION

The Gates Integrated System Approach offers you complete solutions to your fluid power needs. All our hydraulic products are manufactured to stern tolerances and are specifically designed, tested and validated together. This is why our entire hydraulic product line works together perfectly, ensuRing you a leak-free operation. And this is why Gates is the reference in the market



THE GATES ADAPTOR PROGRAMME SUPPORTING TRUSTWORTHY SOLUTIONS FROM PORT TO PORT

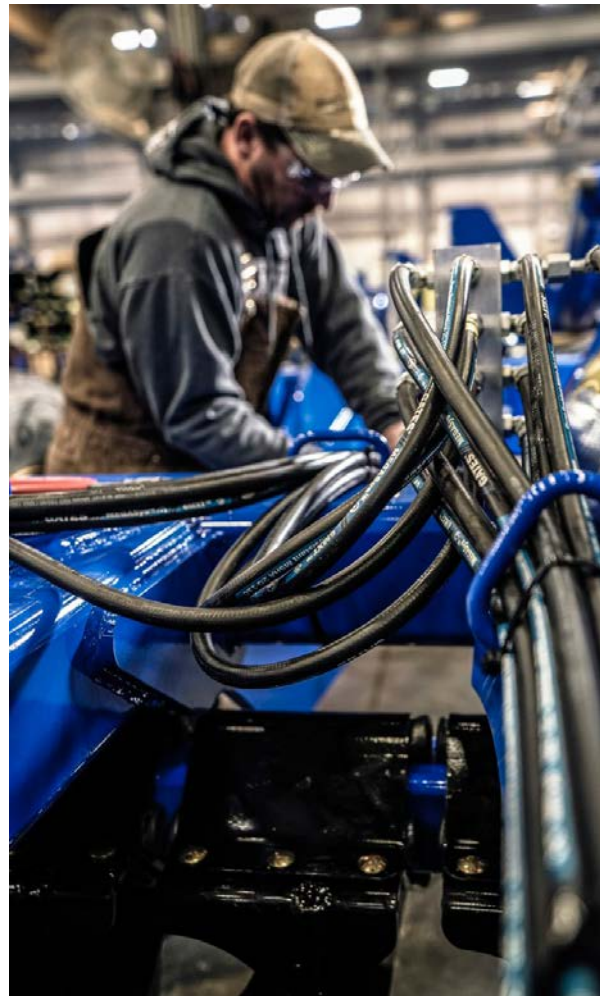
WITH GATES NEW HYDRAULIC ADAPTOR RANGE, WE NOW HAVE EVERYTHING IN PLACE TO BE YOUR PREFERRED ONE-STOP-SHOP.

TRUSTWORTHY SOLUTIONS FROM PORT TO PORT

Gates BSP, JIC & ORFS adaptors complete the hydraulic circuit and from now on, you can rely on trusted Gates quality products to do that job! This versatile and competitively priced product range covers most of the European needs. The program provides you with a well-balanced stock mix that limits your distribution investment but ensures that you always have the right part at hand for an optimal response time to any breakdown which helps you to maximise profit. The adaptors are available in a wide array of sizes and configurations:

- Jump size adaptors – to reduce or expand the existing thread
- Thread conversion adaptors – to change from one port thread to another to allow tube fitting or hose connections to be made
- Hose end adaptors – hose to port, hose to hose, etc.

Ready for the future and the next generation of hydraulic connections. Check out the Gates Quick-Lock™ adaptors - available in the most common international termination types - allowing you to easily change from threaded connections to Quick-Lock High couplings (See page 83).





PROTECT YOUR INVESTMENT

GATES ADAPTORS OFFER YOU THE LONGIVITY YOUR APPLICATION NEEDS: 500H PROTECTION AGAINST RED RUST PER ISO 9227 STANDARD.

Especially in environments with high presence of chemicals, fertilizers, rain, mud, high humidity, salts, air pollution, ... this process is easily accelerated. Most metals are easily oxidized, leading to less robustness of metal componentry of which off-highway vehicles have plenty. Once corrosion starts, it can easily and quickly spread from one component in the hydraulic circuit to another, e.g., from the adaptor to the port or from the adaptor to the hose coupling.

Next to the environmental and direct cost impact of corrosion, meaning replacing the corroded component, there are several indirect costs involved as well. One of the main indirect costs is machine downtime either during preventive maintenance or machine breakdown. The longer it takes, the higher the downtime cost and the higher the chance a project will have to deal with delays and reputational damage. More concerning, however, is the fact that corrosion can lead to safety concerns with loss of life as a worst-case scenario.

Hence, Gates is implemented an adaptor plating standard guaranteeing a minimum protection of 168 hours against white rust corrosion and 500 hours against red rust under ISO 9227 test conditions, which is nearly 350% greater than the SAE J516 144-hour standard (ISO 8434 requests 72 hours as a minimum). Above standard plating surfaces equal less downtime, less safety risks and increased product sustainability.

DID YOU KNOW?

The annual worldwide cost of metallic corrosion is estimated to be over a trillion euro, yet with proper corrosion protection a significant percentage of it can be prevented.



**500 HOURS
AGAINST RED RUST**



STAY CONNECTED WITH GATES QUICK-LOK

With machines becoming more compact and power intensive, designing and manufacturing hydraulic platforms for a worldwide market is a difficult challenge.

That's because environmental controls aimed at preventing hydraulic leaks are becoming more stringent, while manufacturers are demanding greater production line output. With existing threaded technology, meeting all these strict criteria in an efficient way isn't easy. That's where Gates Quick-Lok comes in.



**SAVE TIME, LOWER COSTS
AND REDUCE THE AMOUNT
OF RE-WORK AND NUMBER
OF WARRANTY CLAIMS.**



ERGONOMIC ADVANTAGE AND INCREASED EFFICIENCY

Quick-Lok couplings are threadless. With threading eliminated, torque settings are not required and both line side connection tooling and installation difficulties are no longer an issue. The easy installation process allows you to use Quick-Lok even in the most confined spaces often found in today's compact machines.

You also benefit from the cost-saving advantages that Quick-Lok delivers; for example, there is no need to invest in a vast range of expensive assembly tools or a skilled assembly labour force.

Plus, any kind of operator-dependent variation in the connection process (which would add re-working time and cost) is completely ruled out. And Quick-Lok couplings are safer and more ergonomic as well.

They simply push into place, reducing tiredness among the work force.

WORK SMARTER, NOT HARDER

- **Faster:** Quicker assembly times lead to improved manufacturing productivity
- **Easier:** With Quick-Lok, couplings click into place to ensure positive engagement every time
- **Smarter:** The connection process is error-proof, providing positive tactile feedback that the connection has been made
- **Simpler:** Verification is simple, and just requires the operator to pull back gently on the hose after connection.

With your assembly and check-up time reduced, your production output is optimised, simply by using the most cost-effective product. In addition, no assembly time is lost because of the need to re-work improperly torqued connections – all of which is good news for your business.

FIELD TESTS HAVE SHOWN THAT QUICK-LOK CONNECTIONS WERE MADE 10X FASTER THAN STANDARD THREADED CONNECTIONS.

A PROVEN TRACK RECORD

We manufacture connections to ensure the highest integrity in port-to-port solutions. How? Quick-Lok connectors are produced from hardened steel and machined to extremely high tolerances. They have undergone rigorous testing under actual and simulated field conditions to confirm their strength and sealing ability. The Quick-Lok coupling family is proven to stand up to impulse loads, side loads, flex conditions, vibration, temperature extremes and vacuum conditions.

TESTED, PROTECTED, SELECTED

- Quick-Lok has been tested to ensure that the push-in force is high enough to provide positive feedback that a connection has been made, but low enough to allow easy assembly on the line
- In terms of corrosion resistance properties, all Quick-Lok couplings and adaptors are protected with our chromium 6 free TuffCoat™ plating, showing a red corrosion resistance of at least 400 hours
- That's why Quick-Lok couplings have been embraced by Original Equipment Manufacturers (OEM) around the world



LOWERING TOTAL COST OF OWNERSHIP

Threadless connectors have developed a reputation as expensive niche products for limited applications.

Gates have changed this with the introduction of Quick-Lok assemblies, which are able to replace threaded couplings in a wide range of applications. Our research has shown that by reducing installation and warranty costs, a Quick-Lok assembly solution can dramatically lower total OEM cost of ownership over a comparable threaded assembly.



INTRODUCTION

BSP ADAPTORS

JIC ADAPTORS

ORFS ADAPTORS

PRESSURE WASH
ADAPTORS

QUICK-LOK
ADAPTORS

GATES ONE-STOP-SHOP FOR:

- HYDRAULIC HOSES
- HOSE COUPLINGS
- HOSE ASSEMBLIES
- GUARDS AND SLEEVING
- ADAPTORS
- TUBE FITTING SYSTEMS
- SELF-ASSEMBLY MACHINERY
- OILFIELD PRODUCTS
- INDUSTRIAL HOSES
- ENGINEERING & SERVICES
- DIAGNOSTIC TOOLS

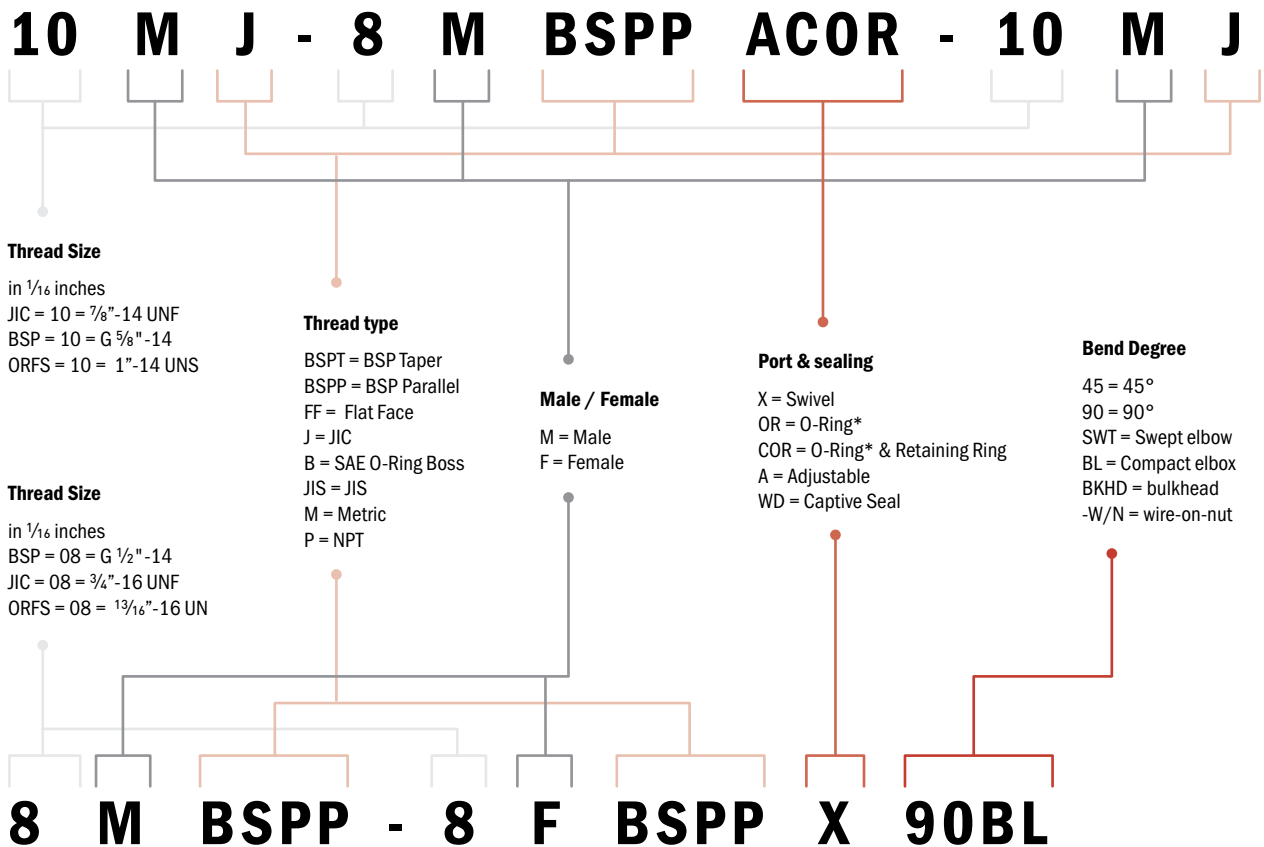


FIND ALL AVAILABLE CATALOGUES ON [GATES.COM](https://www.gates.com)





HOW TO ORDER





GATES PART NUMBER ABBREVIATIONS

DASH SIZE	BSP	JIC	SAE	NPT	ORFS
2	1/8 - 28			Z 1/8 - 27	
4	1/4 - 19	7/16 - 20	7/16 - 20 UNF	Z 1/4 - 18	9/16 - 18
5		1/2 - 20	1/2 - 20 UNF		
6	3/8 - 19	9/16 - 18	9/16 - 18 UNF	Z 3/8 - 18	1 1/16 - 16
8	1/2 - 14	3/4 - 16	3/4 - 16 UNF	Z 1/2 - 14	1 3/16 - 16
10	5/8 - 14	7/8 - 14	7/8 - 14 UNF		1 - 14
12	3/4 - 14	1 1/16 - 12	1 1/16 - 12 UN	Z 3/4 - 14	1 3/16 - 12
14		1 3/16 - 12	1 3/16 - 12 UN		
16	1 - 11	1 5/16 - 12	1 5/16 - 12 UN	Z 1 - 11.5	1 7/16 - 12
20	1 1/4 - 11	1 5/8 - 12	1 5/8 - 12 UN	Z 1 1/4 - 11.5	1 11/16 - 12
24	1 1/2 - 11	1 7/8 - 12	1 7/8 - 12 UN	Z 1 1/2 - 11.5	2 - 12
32	2 - 11		2 1/2 - 12 UN	Z 2 - 11.5	



EXPLANATION OF ORDERING EXAMPLES

ORDERING EXAMPLE 1:	
6MJ-8MBSPPACOR90	
6	= 1/16 - 18 UNF
MJ	= MALE JIC
8	= 1/2 - 14
MBSPP	= Male BSP Parallel
A	= Adjustable
COR	= O-Ring & Retaining Ring
90	= 90 Degree Elbow



ORDERING EXAMPLE 2:	
4MBSPP-4FBSPPX-4MBSPP	
4	= 1/4 - 19
MBSPP	= Male BSP Parallel
4	= 1/4 - 19
FBSPPX	= Female BSP Swivel
4	= 1/4 - 19
MBSPP	= Male BSP Parallel*



*(Final part of tee is on branch)

ORDERING EXAMPLE 3:	
16FFORX-12MBSPPWD	
16	= 1.7/16"-12
FFORX	= Female ORFS Swivel
12	= 3/4" - 14
MBSPP	= Male BSP Parallel
WD	= Captive Seal







DRIVEN BY POSSIBILITY™



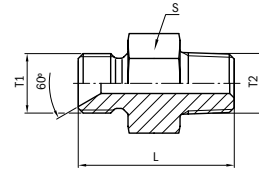
BSP ADAPTORS





BSP MBSP-MSPT

BSPP 60° male / male BSPT taper

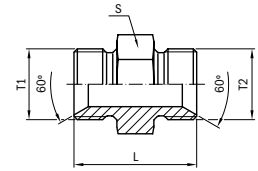


THREAD		LENGTH	HEX/FLATS	WORKING PRESSURE	ADAPTOR
T1	T2	L	S	WP	REF.
BSPP	BSPT	mm	mm	bar	BSP
1/8"-28	1/8"-28	24.0	12.0	345	2MBSPP-2MBSPT
1/8"-28	1/4"-19	30.5	14.0	345	2MBSPP-4MBSPT
1/4"-19	1/8"-28	29.0	14.0	345	4MBSPP-2MBSPT
1/4"-19	1/4"-19	33.0	14.0	345	4MBSPP-4MBSPT
1/4"-19	3/8"-19	33.0	17.0	345	4MBSPP-6MBSPT
1/4"-19	1/2"-14	39.0	22.0	345	4MBSPP-8MBSPT
3/8"-19	1/4"-19	35.0	17.0	345	6MBSPP-4MBSPT
3/8"-19	3/8"-19	35.0	17.0	345	6MBSPP-6MBSPT
3/8"-19	1/2"-14	39.0	22.0	345	6MBSPP-8MBSPT
3/8"-19	3/4"-14	41.0	27.0	275	6MBSPP-12MBSPT
1/2"-14	1/4"-19	37.0	22.0	315	8MBSPP-4MBSPT
1/2"-14	3/8"-19	40.0	22.0	315	8MBSPP-6MBSPT
1/2"-14	1/2"-14	44.0	22.0	315	8MBSPP-8MBSPT
1/2"-14	3/4"-14	44.0	27.0	275	8MBSPP-12MBSPT
3/4"-14	1/2"-14	45.0	27.0	250	12MBSPP-8MBSPT
3/4"-14	3/4"-14	46.0	27.0	250	12MBSPP-12MBSPT
3/4"-14	1"-11	51.0	36.0	205	12MBSPP-16MBSPT
3/4"-1/4	1 1/4"-11	56.0	46.0	170	12MBSPP-20MBSPT
1"-11	3/4"-14	53.0	36.0	200	16MBSPP-12MBSPT
1"-11	1"-11	56.0	36.0	200	16MBSPP-16MBSPT
1"-11	1 1/4"-11	58.0	46.0	170	16MBSPP-20MBSPT
1 1/4"-11	3/4"-14	56.0	50.0	160	20MBSPP-12MBSPT
1 1/4"-11	1"-11	60.0	50.0	160	20MBSPP-16MBSPT
1 1/4"-11	1 1/4"-11	57.0	46.0	160	20MBSPP-20MBSPT
1 1/4"-11	1 1/2"-11	62.0	50.0	105	20MBSPP-24MBSPT
1 1/2"-11	1 1/4"-11	63.0	55.0	125	24MBSPP-20MBSPT
1 1/2"-11	1 1/2"-11	62.0	50.0	105	24MBSPP-24MBSPT
2"-11	2"-11	70.0	65.0	105	32MBSPP-32MBSPT



BSP MBSPP-MBSPP EQUAL

BSPP 60° male / male equal

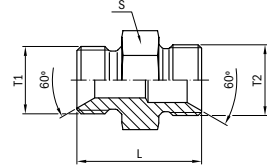


THREAD		LENGTH	HEX/FLATS	WORKING PRESSURE	ADAPTOR
T1	T2	L	S	WP	REF.
BSPP	BSPP	mm	mm	bar	BSP
1/8"-28	1/8"-28	26.5	14.0	350	2MBSPP-2MBSPP
1/4"-19	1/4"-19	30.0	19.0	350	4MBSPP-4MBSPP
3/8"-19	3/8"-19	35.0	22.0	350	6MBSPP-6MBSPP
1/2"-14	1/2"-14	40.0	27.0	315	8MBSPP-8MBSPP
5/8"-14	5/8"-14	43.0	30.0	315	10MBSPP-10MBSPP
3/4"-14	3/4"-14	45.0	32.0	250	12MBSPP-12MBSPP
1"-11	1"-11	53.0	41.0	200	16MBSPP-16MBSPP
1.1/4"-11	1.1/4"-11	57.0	50.0	160	20MBSPP-20MBSPP
1.1/2"-11	1.1/2"-11	61.0	55.0	125	24MBSPP-24MBSPP
2"-11	2"-11	70.0	70.0	80	32MBSPP-32MBSPP



BSP MBSP-60° UNEQUAL

BSPP 60° male / male unequal



THREAD		LENGTH	HEX/FLATS	WORKING PRESSURE	ADAPTOR
T1	T2	L	S	WP	REF.
BSPP	BSPP	mm	mm	bar	BSP
1/8"-28	1/4"-19	28.0	19.0	350	2MBSPP-4MBSPP
1/8"-28	3/8"-19	32.0	22.0	350	2MBSPP-6MBSPP
1/8"-28	1/2"-14	37.0	27.0	315	2MBSPP-8MBSPP
1/4"-19	3/8"-19	34.0	22.0	350	4MBSPP-6MBSPP
1/4"-19	1/2"-14	37.0	27.0	315	4MBSPP-8MBSPP
1/4"-19	5/8"-14	39.0	30.0	315	4MBSPP-10MBSPP
1/4"-19	3/4"-14	41.0	32.0	250	4MBSPP-12MBSPP
1/4"-19	1"-11	45.0	41.0	200	4MBSPP-16MBSPP
3/8"-19	1/2"-14	40.0	27.0	315	6MBSPP-8MBSPP
3/8"-19	5/8"-14	40.0	30.0	315	6MBSPP-10MBSPP
3/8"-19	3/4"-14	41.0	32.0	250	6MBSPP-12MBSPP
3/8"-19	1"-11	46.0	41.0	200	6MBSPP-16MBSPP
1/2"-14	5/8"-14	42.0	30.0	315	8MBSPP-10MBSPP
1/2"-14	3/4"-14	45.0	32.0	250	8MBSPP-12MBSPP
1/2"-14	1"-11	48.0	41.0	200	8MBSPP-16MBSPP
1/2"-14	1.1/4"-11	53.0	50.0	160	8MBSPP-20MBSPP
5/8"-14	3/4"-14	43.0	32.0	250	10MBSPP-12MBSPP
5/8"-14	1"-11	50.0	41.0	200	10MBSPP-16MBSPP
3/4"-14	1"-11	50.0	41.0	200	12MBSPP-16MBSPP
3/4"-14	1.1/4"-11	53.0	50.0	160	12MBSPP-20MBSPP
1"-11	1.1/4"-11	57.0	50.0	160	16MBSPP-20MBSPP
1"-11	1.1/2"-11	56.0	55.0	125	16MBSPP-24MBSPP
1"-11	2"-11	60.0	70.0	80	16MBSPP-32MBSPP
1.1/4"-11	1.1/2"-11	60.0	55.0	125	20MBSPP-24MBSPP
1.1/4"-11	2"-11	65.0	70.0	80	20MBSPP-32MBSPP
1.1/2"-11	2"-11	67.0	70.0	80	24MBSPP-32MBSPP

INTRODUCTION

BSP ADAPTORS

JIC ADAPTORS

ORFS ADAPTORS

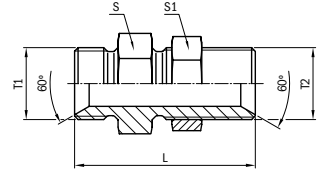
PRESSURE WASH ADAPTORS

QUICK-LOK ADAPTORS



BSP MBSPP-MBSPPBKHD

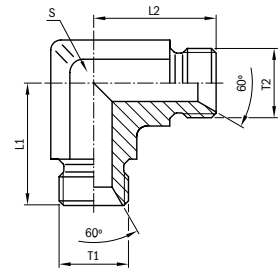
BSPP 60° male / male straight bulkhead with lock nut



THREAD		LENGTH	HEX/FLATS		WORKING PRESSURE	ADAPTOR
T1	T2	L	S	S1	WP	REF.
BSPP	BSPP	mm	mm	mm	bar	BSP
1/8"-28	1/8"-28	41.5	14.0	14.0	350	2MBSPP-2MBSPPBKHD
1/4"-19	1/4"-19	46.0	19.0	19.0	350	4MBSPP-4MBSPPBKHD
3/8"-19	3/8"-19	52.0	22.0	22.0	350	6MBSPP-6MBSPPBKHD
1/2"-14	1/2"-14	59.0	27.0	27.0	315	8MBSPP-8MBSPPBKHD
5/8"-14	5/8"-14	63.0	30.0	30.0	315	10MBSPP-10MBSPPBKHD
3/4"-14	3/4"-14	66.0	32.0	32.0	250	12MBSPP-12MBSPPBKHD
1"-11	1"-11	75.0	41.0	41.0	200	16MBSPP-16MBSPPBKHD
1.1/4"-11	1.1/4"-11	83.0	50.0	50.0	160	20MBSPP-20MBSPPBKHD
1.1/2"-11	1.1/2"-11	93.0	55.0	55.0	125	24MBSPP-24MBSPPBKHD
2"-11	2"-11	100.0	70.0	70.0	125	32MBSPP-32MBSPPBKHD

BSP MBSPP-MBSPP90BL

BSPP 60° male / male 90° compact elbow (forged)

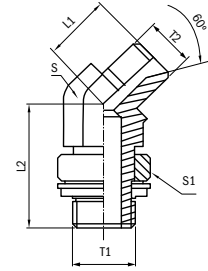


THREAD		LENGTH		HEX/FLATS	WORKING PRESSURE	ADAPTOR
T1	T2	L1	L2	S	WP	REF.
BSPP	BSPP	mm	mm	mm	bar	BSP
1/4"-19	1/4"-19	27.0	27.0	14.0	350	4MBSPP-4MBSPP90BL
3/8"-19	3/8"-19	29.0	29.0	19.0	350	6MBSPP-6MBSPP90BL
1/2"-14	1/2"-14	34.0	34.0	22.0	315	8MBSPP-8MBSPP90BL
3/4"-14	3/4"-14	43.0	43.0	27.0	250	12MBSPP-12MBSPP90BL
1"-11	1"-11	48.0	48.0	33.0	200	16MBSPP-16MBSPP90BL



BSP MBSP-MSPPACOR45

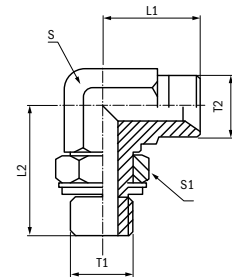
BSPP 60° male / adjustable male BSPP 45° elbow with O-Ring and retaining Ring



THREAD		LENGTH		HEX/FLATS		WORKING PRESSURE	ADAPTOR
T1	T2	L1	L2	S	S1	WP	REF.
BSPP	BSPP	mm	mm	mm	mm	bar	BSP
3/8"-19	3/8"-19	21.0	33.0	19.0	22.0	200	6MBSPP-6MBSPPACOR45
1/2"-14	1/2"-14	24.3	38.6	22.0	27.0	200	8MBSPP-8MBSPPACOR45

BSP MBSP-MSPPACOR90

BSPP 60° male / adjustable male BSPP 90° elbow with O-Ring and retaining Ring

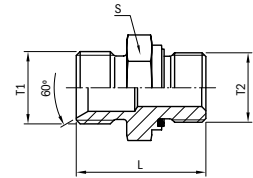


THREAD		LENGTH		HEX/FLATS		WORKING PRESSURE	ADAPTOR
T1	T2	L1	L2	S	S1	WP	REF.
BSPP	BSPP	mm	mm	mm	mm	bar	BSP
1/8"-28	1/8"-28	22.5	26.0	11.0	14.0	200	2MBSPP-2MBSPPACOR90
1/4"-19	1/4"-19	27.0	31.5	14.0	19.0	200	4MBSPP-4MBSPPACOR90
3/8"-19	3/8"-19	29.0	37.0	19.0	22.0	200	6MBSPP-6MBSPPACOR90
3/8"-19	1/2"-14	32.0	43.0	22.0	27.0	200	6MBSPP-8MBSPPACOR90
1/2"-14	1/2"-14	34.0	43.0	22.0	27.0	200	8MBSPP-8MBSPPACOR90



BSP MBSPP-MBSPPWD

BSPP 60° male / male with captive seal

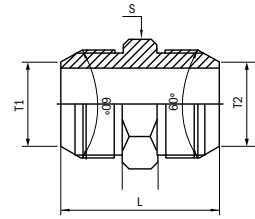


THREAD		LENGTH	HEX/FLATS	WORKING PRESSURE	ADAPTOR
T1	T2	L	S	WP	REF.
BSPP	BSPP	mm	mm	bar	BSP
1/8"-28	1/8"-28	25.5	14.0	350	2MBSPP-2MBSPPWD
1/8"-28	1/4"-19	30.0	19.0	350	2MBSPP-4MBSPPWD
1/4"-19	1/8"-28	37.5	19.0	350	4MBSPP-2MBSPPWD
1/4"-19	1/4"-19	32.0	19.0	350	4MBSPP-4MBSPPWD
1/4"-19	3/8"-19	34.0	22.0	350	4MBSPP-6MBSPPWD
1/4"-19	1/2"-14	39.0	27.0	350	4MBSPP-8MBSPPWD
1/4"-19	3/4"-14	40.0	32.0	350	4MBSPP-12MBSPPWD
3/8"-19	1/8"-28	30.0	22.0	350	6MBSPP-2MBSPPWD
3/8"-19	1/4"-19	34.5	22.0	350	6MBSPP-4MBSPPWD
3/8"-19	3/8"-19	35.0	22.0	350	6MBSPP-6MBSPPWD
3/8"-19	1/2"-14	37.0	27.0	350	6MBSPP-8MBSPPWD
3/8"-19	3/4"-14	43.5	32.0	350	6MBSPP-12MBSPPWD
3/8"-19	1"-11	47.5	41.0	350	6MBSPP-16MBSPPWD
1/2"-14	1/4"-19	40.0	27.0	315	8MBSPP-4MBSPPWD
1/2"-14	3/8"-19	40.0	27.0	315	8MBSPP-6MBSPPWD
1/2"-14	1/2"-14	42.0	27.0	315	8MBSPP-8MBSPPWD
1/2"-14	3/4"-14	43.0	32.0	315	8MBSPP-12MBSPPWD
1/2"-14	1"-11	49.5	41.0	315	8MBSPP-16MBSPPWD
3/4"-14	1/4"-19	41.5	32.0	250	12MBSPP-4MBSPPWD
3/4"-14	3/8"-19	42.0	32.0	250	12MBSPP-6MBSPPWD
3/4"-14	1/2"-14	44.5	32.0	250	12MBSPP-8MBSPPWD
3/4"-14	3/4"-14	47.0	32.0	250	12MBSPP-12MBSPPWD
3/4"-14	1"-11	52.5	41.0	250	12MBSPP-16MBSPPWD
1"-11	1/2"-14	50.5	41.0	200	16MBSPP-8MBSPPWD
1"-11	3/4"-14	52.5	41.0	200	16MBSPP-12MBSPPWD
1"-11	1"-11	54.5	41.0	200	16MBSPP-16MBSPPWD
1.1/4"-11	3/4"-14	52.5	50.0	160	20MBSPP-12MBSPPWD



BSP MBSP-MJIS (BSP)

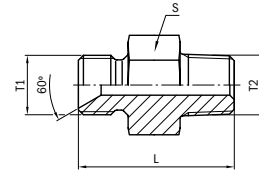
BSPP 60° male / male jis. BSP thread



THREAD		LENGTH	HEX/FLATS	WORKING PRESSURE	ADAPTOR
T1	T2	L	S	WP	REF.
BSPP	JIS	mm	mm	bar	BSP
1/4"-19	1/4"-19	34.0	19.0	345	4MBSPP-4MJIS(BSP)

BSP MBSP-MP

BSPP 60° male /male NPT

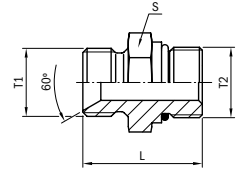


THREAD		LENGTH	HEX/FLATS	WORKING PRESSURE	ADAPTOR
T1	T2	L	S	WP	REF.
BSPP	NPT	mm	mm	bar	BSP
1/4"-19	1/4"-18	33.0	19.0	275	4MBSPP-4MP
3/8"-19	3/8"-18	37.5	22.0	210	6MBSPP-6MP
1/2"-14	1/2"-14	45.5	27.0	210	8MBSPP-8MP
3/4"-14	3/4"-14	49.0	32.0	170	12MBSPP-12MP
1"-11	1" - 11.5	57.0	41.0	140	16MBSPP-16MP
2"-11	2" - 11.5	68.2	70.0	70	32MBSPP-32MP



BSP MBSPP-MB

BSPP 60° male /male SAE 'O' Ring boss

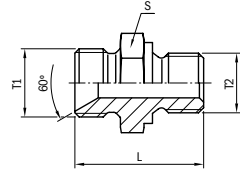


THREAD		LENGTH	HEX/FLATS	WORKING PRESSURE	ADAPTOR
T1	T2	L	S	WP	REF.
BSPP	SAE O	mm	mm	bar	BSP
1/4"-19	7/16" - 20 UNF	29.5	19.0	315	4MBSPP-4MB
1/4"-19	1/2" - 20 UNF	29.2	19.0	315	4MBSPP-5MB
1/4"-19	9/16" - 18 UNF	30.0	19.0	315	4MBSPP-6MB
1/4"-19	3/4" - 16 UNF	32.0	22.0	315	4MBSPP-8MB
3/8"-19	7/16" - 20 UNF	32.8	22.0	315	6MBSPP-4MB
3/8"-19	9/16" - 18 UNF	33.5	22.0	315	6MBSPP-6MB
3/8"-19	3/4" - 16 UNF	33.0	22.0	315	6MBSPP-8MB
3/8"-19	7/8" - 14 UNF	36.5	27.0	250	6MBSPP-10MB
3/8"-19	1 1/16" - 12 UN	40.0	32.0	250	6MBSPP-12MB
1/2"-14	3/4" - 16 UNF	40.0	27.0	315	8MBSPP-8MB
1/2"-14	7/8" - 14 UNF	38.7	27.0	250	8MBSPP-10MB
1/2"-14	1 1/16" - 12 UN	42.0	32.0	250	8MBSPP-12MB
5/8"-14	7/8" - 14 UNF	42.5	30.0	250	10MBSPP-10MB
5/8"-14	1 1/16" - 12 UN	43.5	32.0	250	10MBSPP-12MB
3/4"-14	3/4" - 16 UNF	43.8	32.0	250	12MBSPP-8MB
3/4"-14	7/8" - 14 UNF	43.5	32.0	250	12MBSPP-10MB
3/4"-14	1 1/16" - 12 UN	44.5	32.0	250	12MBSPP-12MB
3/4"-14	1 5/16" - 12 UN	46.0	41.0	200	12MBSPP-16MB
1"-11	1 1/16" - 12 UN	51.0	41.0	200	16MBSPP-12MB
1"-11	1 5/16" - 12 UN	46.1	41.0	200	16MBSPP-16MB



BSP MBSP-MM

BSP 60° male / male metric

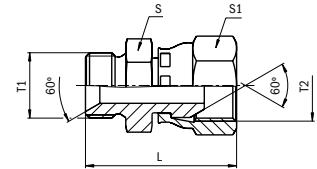


THREAD		LENGTH	HEX/FLATS	WORKING PRESSURE	ADAPTOR
T1	T2	L	S	WP	REF.
BSP	METRIC	mm	mm	bar	BSP
1/4"-19	M10x1	28.5	19.0	350	4MBSPP-10MM
1/4"-19	M12x1.5	33.0	19.0	350	4MBSPP-12MM
1/4"-19	M14x1.5	33.0	19.0	350	4MBSPP-14MM
1/4"-19	M16x1.5	33.5	22.0	350	4MBSPP-16MM
1/4"-19	M18x1.5	35.0	24.0	350	4MBSPP-18MM
1/4"-19	M20x1.5	37.5	27.0	350	4MBSPP-20MM
1/4"-19	M22x1.5	38.0	27.0	350	4MBSPP-22MM
3/8"-19	M12x1.5	34.5	22.0	350	6MBSPP-12MM
3/8"-19	M14x1.5	34.5	22.0	350	6MBSPP-14MM
3/8"-19	M16x1.5	34.5	22.0	350	6MBSPP-16MM
3/8"-19	M18x1.5	36.0	24.0	350	6MBSPP-18MM
3/8"-19	M20x1.5	38.5	27.0	350	6MBSPP-20MM
3/8"-19	M22x1.5	38.5	27.0	350	6MBSPP-22MM
1/2"-14	M12x1.5	37.0	27.0	315	8MBSPP-12MM
1/2"-14	M14x1.5	38.0	27.0	315	8MBSPP-14MM
1/2"-14	M16x1.5	38.0	27.0	315	8MBSPP-16MM
1/2"-14	M18x1.5	38.5	27.0	315	8MBSPP-18MM
1/2"-14	M20x1.5	40.5	27.0	315	8MBSPP-20MM
1/2"-14	M22x1.5	41.0	27.0	315	8MBSPP-22MM
1/2"-14	M24x1.5	41.0	30.0	315	8MBSPP-24MM
1/2"-14	M26x1.5	45.0	32.0	315	8MBSPP-26MM
3/4"-14	M18x1.5	43.0	32.0	250	12MBSPP-18MM
3/4"-14	M22x1.5	42.0	32.0	250	12MBSPP-22MM
3/4"-14	M26x1.5	44.0	32.0	250	12MBSPP-26MM
1"-11	M22x1.5	49.0	41.0	200	16MBSPP-22MM
1"-11	M26x1.5	49.0	41.0	200	16MBSPP-26MM



BSP MBSPP-FBSPPX

BSPP 60° male / female swivel

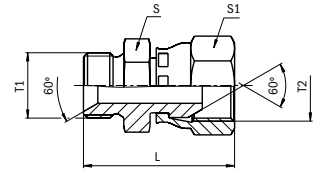


THREAD		LENGTH	HEX/FLATS		WORKING PRESSURE	ADAPTOR
T1	T2	L	S	S1	WP	REF.
BSPP	BSPP F	mm	mm	mm	bar	BSP
1/8"-28	1/8"-28	23.0	14.0	14.0	350	2MBSPP-2FBSPPX
1/8"-28	1/4"-19	28.0	14.0	19.0	350	2MBSPP-4FBSPPX
1/4"-19	1/8"-28	28.5	19.0	14.0	350	4MBSPP-2FBSPPX
1/4"-19	1/4"-19	29.5	19.0	19.0	350	4MBSPP-4FBSPPX
1/4"-19	3/8"-19	33.0	19.0	22.0	350	4MBSPP-6FBSPPX
1/4"-19	1/2"-14	34.5	22.0	27.0	315	4MBSPP-8FBSPPX
1/4"-19	3/4"-14	40.0	27.0	32.0	250	4MBSPP-12FBSPPX
3/8"-19	1/4"-19	33.0	22.0	19.0	350	6MBSPP-4FBSPPX
3/8"-19	3/8"-19	34.0	22.0	22.0	350	6MBSPP-6FBSPPX
3/8"-19	1/2"-14	36.0	22.0	27.0	315	6MBSPP-8FBSPPX
3/8"-19	3/4"-14	38.5	27.0	32.0	250	6MBSPP-12FBSPPX
3/8"-19	1"-11	41.5	36.0	41.0	200	6MBSPP-16FBSPPX
1/2"-14	1/4"-19	36.5	27.0	19.0	315	8MBSPP-4FBSPPX
1/2"-14	3/8"-19	37.5	27.0	22.0	315	8MBSPP-6FBSPPX
1/2"-14	1/2"-14	39.0	27.0	27.0	315	8MBSPP-8FBSPPX
1/2"-14	5/8"-14	40.0	27.0	30.0	315	8MBSPP-10FBSPPX
1/2"-14	3/4"-14	43.0	27.0	32.0	250	8MBSPP-12FBSPPX
1/2"-14	1"-11	43.5	36.0	41.0	200	8MBSPP-16FBSPPX
5/8"-14	5/8"-14	42.0	30.0	30.0	315	10MBSPP-10FBSPPX
3/4"-14	3/8"-19	39.0	32.0	22.0	250	12MBSPP-6FBSPPX
3/4"-14	1/2"-14	42.5	32.0	27.0	250	12MBSPP-8FBSPPX
3/4"-14	3/4"-14	45.0	32.0	32.0	250	12MBSPP-12FBSPPX
3/4"-14	1"-11	47.5	36.0	41.0	200	12MBSPP-16FBSPPX
3/4"-14	1.1/4"-11	51.5	41.0	50.0	160	12MBSPP-20FBSPPX
1"-11	1/2"-14	47.5	41.0	27.0	200	16MBSPP-8FBSPPX
1"-11	3/4"-14	50.0	41.0	32.0	200	16MBSPP-12FBSPPX
1"-11	1"-11	53.5	41.0	41.0	200	16MBSPP-16FBSPPX
1"-11	1.1/4"-11	53.5	41.0	50.0	160	16MBSPP-20FBSPPX
1"-11	1.1/2"-11	56.0	50.0	55.0	125	16MBSPP-24FBSPPX
1.1/4"-11	3/4"-14	51.0	50.0	32.0	160	20MBSPP-12FBSPPX
1.1/4"-11	1"-11	53.0	50.0	41.0	160	20MBSPP-16FBSPPX
1.1/4"-11	1.1/4"-11	54.5	50.0	50.0	160	20MBSPP-20FBSPPX



BSP MBSP-FBSPPX

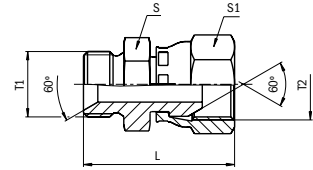
BSP 60° male / female swivel
CONTINUED



THREAD		LENGTH	HEX/FLATS		WORKING PRESSURE	ADAPTOR
T1	T2	L	S	S1	WP	REF.
BSP	BSP F	mm	mm	mm	bar	BSP
1 1/4"-11	1 1/2"-11	55.5	50.0	55.0	125	20MBSP-24FBSPPX
1 1/4"-11	2"-11	59.5	60.0	70.0	80	20MBSP-32FBSPPX
1 1/2"-11	1"-11	55.0	55.0	41.0	125	24MBSP-16FBSPPX
1 1/2"-11	1 1/4"-11	57.5	55.0	50.0	125	24MBSP-20FBSPPX
1 1/2"-11	1 1/2"-11	58.5	55.0	55.0	125	24MBSP-24FBSPPX
1 1/2"-11	2"-11	61.5	60.0	70.0	125	24MBSP-32FBSPPX
2"-11	1 1/4"-11	67.0	70.0	50.0	80	32MBSP-20FBSPPX
2"-11	1 1/2"-11	68.1	70.0	55.0	125	32MBSP-24FBSPPX
2"-11	2"-11	69.0	70.0	70.0	125	32MBSP-32FBSPPX

BSP MBSP-FBSPPX-W/N

BSP 60° male / female swivel with wire-on-nut



THREAD		LENGTH	HEX/FLATS		WORKING PRESSURE	ADAPTOR
T1	T2	L	S	S1	WP	REF.
BSP	BSP F	mm	mm	mm	bar	BSP
3/8"-19	3/8"-19	34.5	22.0	22.0	350	6MBSP-6FBSPPX-W/N
1/2"-14	1/2"-14	39.0	27.0	27.0	315	8MBSP-8FBSPPX-W/N
1"-11	1"-11	53.5	41.0	41.0	200	16MBSP-16FBSPPX-W/N

INTRODUCTION

BSP ADAPTORS

JIC ADAPTORS

ORFS ADAPTORS

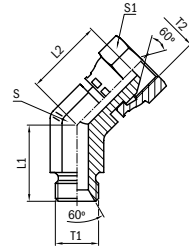
PRESSURE WASH ADAPTORS

QUICK-LOK ADAPTORS



BSP MBSPP-FBSPPX45BL

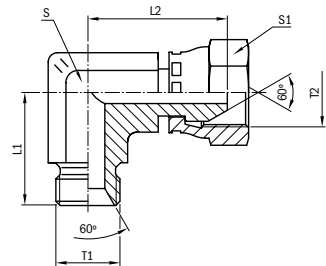
BSPP 60° male / female swivel 45° compact elbow (forged)



THREAD		LENGTH		HEX/FLATS		WORKING PRESSURE	ADAPTOR
T1	T2	L1	L2	S	S1	WP	REF.
BSPP	BSPP F	mm	mm	mm	mm	bar	BSP
1/4"-19	1/4"-19	21.0	23.0	14.0	19.0	350	4MBSPP-4FBSPPX45BL
3/8"-19	3/8"-19	25.0	26.0	19.0	22.0	350	6MBSPP-6FBSPPX45BL
1/2"-14	1/2"-14	28.0	26.5	22.0	27.0	315	8MBSPP-8FBSPPX45BL
3/4"-14	3/4"-14	32.0	35.0	27.0	32.0	250	12MBSPP-12FBSPPX45BL
1"-11	1"-11	37.0	37.0	33.0	41.0	200	16MBSPP-16FBSPPX45BL

BSP MBSPP-FBSPPX90BL

BSPP 60° male / female swivel 90° compact elbow (forged)

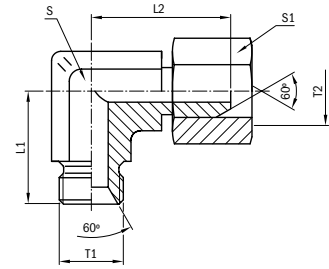


THREAD		LENGTH		HEX/FLATS		WORKING PRESSURE	ADAPTOR
T1	T2	L1	L2	S	S1	WP	REF.
BSPP	BSPP F	mm	mm	mm	mm	bar	BSP
1/4"-19	1/4"-19	27.0	23.8	14.0	19.0	350	4MBSPP-4FBSPPX90BL
3/8"-19	3/8"-19	29.0	28.2	19.0	22.0	350	6MBSPP-6FBSPPX90BL
1/2"-14	1/2"-14	35.0	33.6	22.0	27.0	315	8MBSPP-8FBSPPX90BL
5/8"-14	5/8"-14	37.0	35.0	22.0	30.0	315	10MBSPP-10FBSPPX90BL
3/4"-14	3/4"-14	43.0	37.9	27.0	32.0	250	12MBSPP-12FBSPPX90BL
1"-11	1"-11	47.0	44.0	33.0	41.0	200	16MBSPP-16FBSPPX90BL
1.1/4"-11	1.1/4"-11	52.3	50.0	41.0	50.0	160	20MBSPP-20FBSPPX90BL



BSP MBSP-4FBSPX90BL-W/N

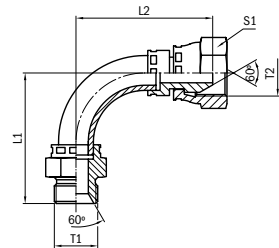
BSPP 60° male / female swivel 90° compact elbow (forged) with wire-on-nut



THREAD		LENGTH		HEX/FLATS		WORKING PRESSURE	ADAPTOR
T1	T2	L1	L2	S	S1	WP	REF.
BSPP	BSPP F	mm	mm	mm	mm	bar	BSP
1/4"-19	1/4"-19	27.0	23.8	14.0	19.0	350	4MBSPP-4FBSPX90BL-W/N

BSP MBSP-4FBSPX90SWT

BSPP 60° male / female swivel 90° swept elbow



THREAD		LENGTH		HEX/FLATS	WORKING PRESSURE	ADAPTOR
T1	T2	L1	L2	S1	WP	REF.
BSPP	BSPP F	mm	mm	mm	bar	BSP
1/4"-19	1/4"-19	30.0	32.5	19.0	350	4MBSPP-4FBSPX90SWT
3/8"-19	3/8"-19	37.0	39.0	22.0	350	6MBSPP-6FBSPX90SWT
1/2"-14	1/2"-14	45.0	47.0	27.0	315	8MBSPP-8FBSPX90SWT
5/8"-14	5/8"-14	52.0	52.0	30.0	315	10MBSPP-10FBSPX90SWT
3/4"-14	3/4"-14	54.0	57.0	32.0	250	12MBSPP-12FBSPX90SWT
1"-11	1"-11	68.0	69.0	41.0	200	16MBSPP-16FBSPX90SWT
1 1/4"-11	1 1/4"-11	100.0	94.0	50.0	160	20MBSPP-20FBSPX90SWT

INTRODUCTION

BSP ADAPTORS

JIC ADAPTORS

ORFS ADAPTORS

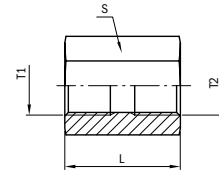
PRESSURE WASH ADAPTORS

QUICK-LOK ADAPTORS



BSP FBSP-FBSP

BSPP female fixed / female fixed

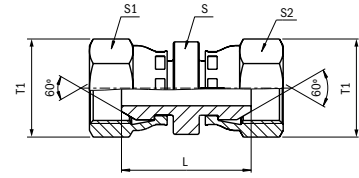


THREAD		LENGTH	HEX/FLATS	WORKING PRESSURE	ADAPTOR
T1	T2	L	S	WP	REF.
BSPP F	BSPP F	mm	mm	bar	BSP
1/8"-28	1/8"-28	22.0	14.0	350	2FBSP-2FBSP
1/4"-19	1/4"-19	25.0	19.0	350	4FBSP-4FBSP
3/8"-19	3/8"-19	27.0	22.0	350	6FBSP-6FBSP
1/2"-14	1/2"-14	35.0	27.0	315	8FBSP-8FBSP
5/8"-14	5/8"-14	36.0	30.0	315	10FBSP-10FBSP
3/4"-14	3/4"-14	40.0	32.0	250	12FBSP-12FBSP
1"-11	1"-11	45.0	41.0	200	16FBSP-16FBSP
1.1/4"-11	1.1/4"-11	48.0	50.0	160	20FBSP-20FBSP
1.1/2"-11	1.1/2"-11	54.0	55.0	125	24FBSP-24FBSP
2"-11	2"-11	60.0	70.0	125	32FBSP-32FBSP



BSP FBSPPX-FBSPPX

BSPP 60° female swivel / female swivel



THREAD		LENGTH	HEX/FLATS			WORKING PRESSURE	ADAPTOR
T1	T2	L	S	S1	S2	WP	REF.
BSPP F	BSPP F	mm	mm	mm	mm	bar	BSP
1/8"-28	1/8"-28	24.5	12.0	14.0	14.0	350	2FBSPPX-2FBSPPX
1/4"-19	1/4"-19	29.0	14.0	19.0	19.0	350	4FBSPPX-4FBSPPX
1/4"-19	3/8"-19	31.5	17.0	22.0	19.0	350	4FBSPPX-6FBSPPX
1/4"-19	1/2"-14	33.5	22.0	27.0	19.0	315	4FBSPPX-8FBSPPX
3/8"-19	3/8"-19	32.5	17.0	22.0	22.0	350	6FBSPPX-6FBSPPX
3/8"-19	1/2"-14	34.5	22.0	27.0	22.0	315	6FBSPPX-8FBSPPX
1/2"-14	1/2"-14	38.0	22.0	27.0	27.0	315	8FBSPPX-8FBSPPX
1/2"-14	5/8"-14	39.0	24.0	30.0	27.0	315	8FBSPPX-10FBSPPX
1/2"-14	3/4"-14	41.0	27.0	32.0	27.0	250	8FBSPPX-12FBSPPX
5/8"-14	5/8"-14	39.0	24.0	30.0	30.0	315	10FBSPPX-10FBSPPX
3/4"-14	3/4"-14	43.5	27.0	32.0	32.0	250	12FBSPPX-12FBSPPX
3/4"-14	1"-11	49.0	36.0	41.0	32.0	200	12FBSPPX-16FBSPPX
1"-11	1"-11	50.0	36.0	41.0	41.0	200	16FBSPPX-16FBSPPX
1.1/4"-11	1.1/4"-11	55.0	41.0	50.0	50.0	160	20FBSPPX-20FBSPPX
1.1/2"-11	1.1/2"-11	58.0	50.0	55.0	55.0	125	24FBSPPX-24FBSPPX
2"-11	2"-11	61.5	60.0	70.0	70.0	125	32FBSPPX-32FBSPPX

INTRODUCTION

BSP ADAPTORS

JIC ADAPTORS

ORFS ADAPTORS

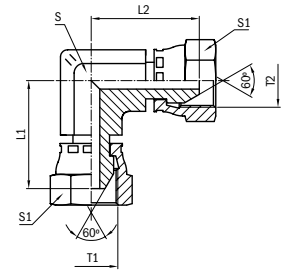
PRESSURE WASH ADAPTORS

QUICK-LOK ADAPTORS



BSP FBSPPX-FBSPPX90BL

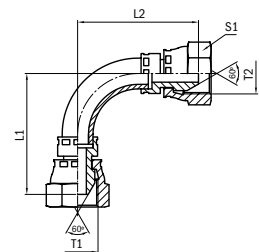
BSPP 60° female swivel / female swivel 90° compact elbow (forged)



THREAD		LENGTH		HEX/FLATS		WORKING PRESSURE	ADAPTOR
T1	T2	L1	L2	S	S1	WP	REF.
BSPP F	BSPP F	mm	mm	mm	mm	bar	BSP
1/4"-19	1/4"-19	24.5	24.5	14.0	19.0	350	4FBSPPX-4FBSPPX90BL
3/8"-19	3/8"-19	27.2	27.2	19.0	22.0	350	6FBSPPX-6FBSPPX90BL
1/2"-14	1/2"-14	31.5	31.5	22.0	27.0	315	8FBSPPX-8FBSPPX90BL
5/8"-14	5/8"-14	37.0	37.0	22.0	30.0	315	10FBSPPX-10FBSPPX90BL
3/4"-14	3/4"-14	37.9	37.9	27.0	32.0	250	12FBSPPX-12FBSPPX90BL
1"-11	1"-11	46.0	46.0	33.0	41.0	200	16FBSPPX-16FBSPPX90BL
1.1/4"-11	1.1/4"-11	50.0	50.0	41.0	50.0	160	20FBSPPX-20FBSPPX90BL

BSP FBSPPX-FBSPPX90SWT

BSPP 60° female swivel / female swivel 90° swept elbow

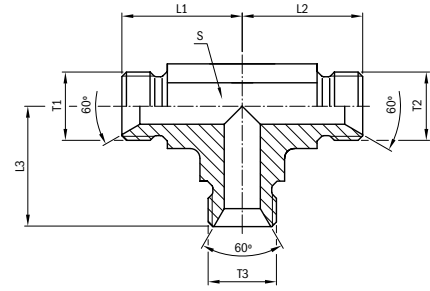


THREAD		LENGTH		HEX/FLATS	WORKING PRESSURE	ADAPTOR
T1	T2	L1	L2	S1	WP	REF.
BSPP F	BSPP F	mm	mm	mm	bar	BSP
1/4"-19	1/4"-19	30.0	30.0	19.0	350	4FBSPPX-4FBSPPX90SWT
3/8"-19	3/8"-19	36.5	36.5	22.0	350	6FBSPPX-6FBSPPX90SWT
1/2"-14	1/2"-14	45.0	45.0	27.0	315	8FBSPPX-8FBSPPX90SWT
5/8"-14	5/8"-14	53.0	53.0	30.0	315	10FBSPPX-10FBSPPX90SWT
3/4"-14	3/4"-14	58.0	58.0	32.0	250	12FBSPPX-12FBSPPX90SWT
1"-11	1"-11	73.0	73.0	41.0	200	16FBSPPX-16FBSPPX90SWT
1.1/4"-11	1.1/4"-11	92.0	92.0	50.0	160	20FBSPPX-20FBSPPX90SWT



BSP MBSP-MSPP-MSPP

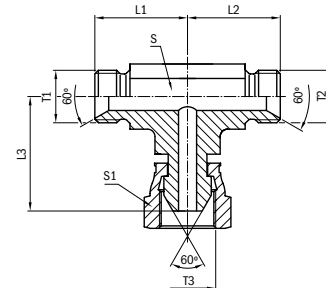
BSPP 60° male / male / male "T" (forged)



THREAD			LENGTH			HEX/FLATS		WORKING PRESSURE	ADAPTOR
T1	T2	T3	L1	L2	L3	S	WP	REF.	
BSPP	BSPP	BSPP	mm	mm	mm	mm	bar	BSP	
1/4"-19	1/4"-19	1/4"-19	27.0	27.0	27.0	14.0	350	4MSPP-4MSPP-4MSPP	
3/8"-19	3/8"-19	3/8"-19	29.0	29.0	29.0	19.0	350	6MSPP-6MSPP-6MSPP	
1/2"-14	1/2"-14	1/2"-14	35.0	35.0	35.0	22.0	315	8MSPP-8MSPP-8MSPP	
5/8"-14	5/8"-14	5/8"-14	37.0	37.0	37.0	27.0	315	10MSPP-10MSPP-10MSPP	
3/4"-14	3/4"-14	3/4"-14	43.0	43.0	43.0	27.0	250	12MSPP-12MSPP-12MSPP	
1"-11	1"-11	1"-11	48.0	48.0	48.0	33.0	200	16MSPP-16MSPP-16MSPP	
1.1/4"-11	1.1/4"-11	1.1/4"-11	51.0	51.0	51.0	41.0	160	20MSPP-20MSPP-20MSPP	
1.1/2"-11	1.1/2"-11	1.1/2"-11	60.5	60.5	60.5	48.0	125	24MSPP-24MSPP-24MSPP	

BSP MBSP-MSPP-FBSPPX

BSPP 60° male / male / female swivel "T" (forged)



THREAD			LENGTH			HEX/FLATS		WORKING PRESSURE	ADAPTOR
T1	T2	T3	L1	L2	L3	S	S 1	WP	REF.
BSPP	BSPP	BSPP F	mm	mm	mm	mm	mm	bar	BSP
1/4"-19	1/4"-19	1/4"-19	27.0	27.0	23.8	14.0	19.0	350	4MSPP-4MSPP-4FBSPPX
3/8"-19	3/8"-19	3/8"-19	29.0	29.0	28.2	19.0	22.0	350	6MSPP-6MSPP-6FBSPPX
1/2"-14	1/2"-14	1/2"-14	35.0	35.0	33.6	22.0	27.0	315	8MSPP-8MSPP-8FBSPPX
3/4"-14	3/4"-14	3/4"-14	43.0	43.0	37.9	27.0	32.0	250	12MSPP-12MSPP-12FBSPPX
1"-11	1"-11	1"-11	47.0	47.0	45.4	33.0	41.0	200	16MSPP-16MSPP-16FBSPPX
1.1/4"-11	1.1/4"-11	1.1/4"-11	50.0	50.0	50.0	41.0	50.0	160	20MSPP-20MSPP-20FBSPPX

INTRODUCTION

BSP ADAPTORS

JIC ADAPTORS

ORFS ADAPTORS

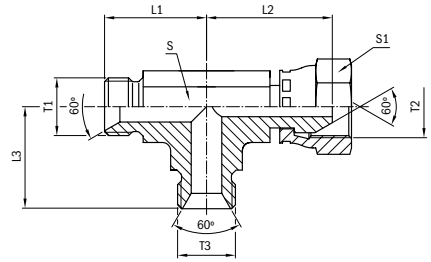
PRESSURE WASH ADAPTORS

QUICK-LOK ADAPTORS



BSP MBSPP-FBSPPX-MBSPP

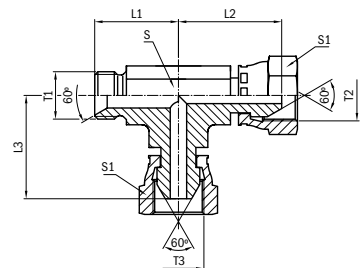
BSPP 60° male / female swivel / male "T" (forged)



THREAD			LENGTH			HEX/FLATS		WORKING PRESSURE	ADAPTOR
T1	T2	T3	L1	L2	L3	S	S1	WP	REF.
BSPP	BSPP F	BSPP	mm	mm	mm	mm	mm	bar	BSP
1/4"-19	1/4"-19	1/4"-19	27.0	23.8	27.0	14.0	19.0	350	4MBSPP-4FBSPPX-4MBSPP
3/8"-19	3/8"-19	3/8"-19	29.0	28.2	29.0	19.0	22.0	350	6MBSPP-6FBSPPX-6MBSPP
1/2"-14	1/2"-14	1/2"-14	35.0	33.6	35.0	22.0	27.0	315	8MBSPP-8FBSPPX-8MBSPP
3/4"-14	3/4"-14	3/4"-14	43.0	37.9	43.0	27.0	32.0	250	12MBSPP-12FBSPPX-12MBSPP
1"-11	1"-11	1"-11	47.0	45.4	47.0	33.0	41.0	200	16MBSPP-16FBSPPX-16MBSPP
1.1/4"-11	1.1/4"-11	1.1/4"-11	50.0	50.0	50.0	41.0	50.0	160	20MBSPP-20FBSPPX-20MBSPP

BSP MBSPP-FBSPPX-FBSPPX

BSPP 60° male / female swivel / female swivel "T" (forged)

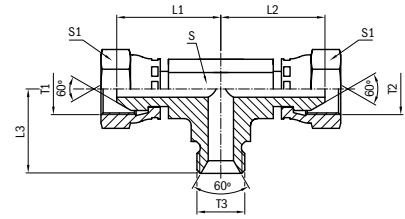


THREAD			LENGTH			HEX/FLATS		WORKING PRESSURE	ADAPTOR
T1	T2	T3	L1	L2	L3	S	S1	WP	REF.
BSPP	BSPP F	BSPP F	mm	mm	mm	mm	mm	bar	BSP
1/4"-19	1/4"-19	1/4"-19	27.0	23.8	23.8	14.0	19.0	350	4MBSPP-4FBSPPX-4FBSPPX
3/8"-19	3/8"-19	3/8"-19	29.0	28.2	28.2	19.0	22.0	350	6MBSPP-6FBSPPX-6FBSPPX
1/2"-14	1/2"-14	1/2"-14	35.0	33.6	33.6	22.0	27.0	315	8MBSPP-8FBSPPX-8FBSPPX
3/4"-14	3/4"-14	3/4"-14	43.0	37.9	37.9	27.0	32.0	250	12MBSPP-12FBSPPX-12FBSPPX
1"-11	1"-11	1"-11	47.0	45.4	45.4	33.0	41.0	200	16MBSPP-16FBSPPX-16FBSPPX



BSP FBSPPX-FBSPPX-MBSPP

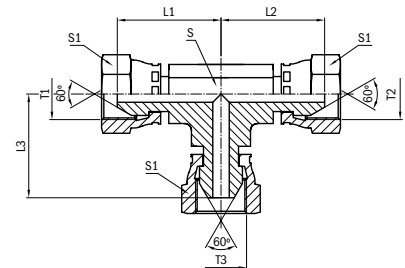
BSPP 60° female swivel / female swivel / male "T" (forged)



THREAD			LENGTH			HEX/FLATS		WORKING PRESSURE	ADAPTOR
T1	T2	T3	L1	L2	L3	S	S1	WP	REF.
BSPP F	BSPP F	BSPP	mm	mm	mm	mm	mm	bar	BSP
1/4"-19	1/4"-19	1/4"-19	24.0	24.0	27.0	14.0	19.0	350	4FBSPPX-4FBSPPX-4MBSPP
3/8"-19	3/8"-19	3/8"-19	28.2	28.2	29.0	19.0	22.0	350	6FBSPPX-6FBSPPX-6MBSPP
1/2"-14	1/2"-14	1/2"-14	33.6	33.6	35.0	22.0	27.0	315	8FBSPPX-8FBSPPX-8MBSPP
5/8"-14	5/8"-14	5/8"-14	35.0	35.0	37.0	27.0	30.0	315	10FBSPPX-10FBSPPX-10MBSPP
3/4"-14	3/4"-14	3/4"-14	37.9	37.9	43.0	27.0	32.0	250	12FBSPPX-12FBSPPX-12MBSPP
1"-11	1"-11	1"-11	45.4	45.4	47.0	33.0	41.0	200	16FBSPPX-16FBSPPX-16MBSPP

BSP FBSPPX-FBSPPX-FBSPPX

BSPP 60° female swivel / female swivel / female swivel "T" (forged)



THREAD			LENGTH			HEX/FLATS		WORKING PRESSURE	ADAPTOR
T1	T2	T3	L1	L2	L3	S	S1	WP	REF.
BSPP F	BSPP F	BSPP F	mm	mm	mm	mm	mm	bar	BSP
1/4"-19	1/4"-19	1/4"-19	24.5	24.5	24.5	14.0	19.0	350	4FBSPPX-4FBSPPX-4FBSPPX
3/8"-19	3/8"-19	3/8"-19	27.5	27.5	27.5	19.0	22.0	350	6FBSPPX-6FBSPPX-6FBSPPX
1/2"-14	1/2"-14	1/2"-14	31.5	31.5	31.5	22.0	27.0	315	8FBSPPX-8FBSPPX-8FBSPPX
5/8"-14	5/8"-14	5/8"-14	35.0	35.0	35.0	22.0	30.0	315	10FBSPPX-10FBSPPX-10FBSPPX
3/4"-14	3/4"-14	3/4"-14	41.5	41.5	41.5	27.0	32.0	250	12FBSPPX-12FBSPPX-12FBSPPX
1"-11	1"-11	1"-11	46.0	46.0	46.0	33.0	41.0	200	16FBSPPX-16FBSPPX-16FBSPPX
1.1/4"-11	1.1/4"-11	1.1/4"-11	51.2	51.2	51.2	41.0	50.0	160	20FBSPPX-20FBSPPX-20FBSPPX
1.1/2"-11	1.1/2"-11	1.1/2"-11	63.5	63.5	63.5	48.0	55.0	125	24FBSPPX-24FBSPPX-24FBSPPX

INTRODUCTION

BSP ADAPTORS

JIC ADAPTORS

ORFS ADAPTORS

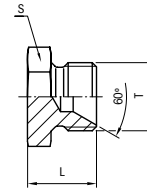
PRESSURE WASH ADAPTORS

QUICK-LOK ADAPTORS



BSP MBSPT-PLUG

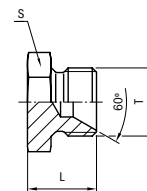
BSPP 60° male BSP taper cone plug



THREAD	LENGTH	HEX/FLATS	WORKING PRESSURE	ADAPTOR
T	L	S	WP	REF.
BSPT	mm	mm	bar	BSP
1/8"-28	16.0	12.0	345	2MBSPT-PLUG

BSP MBSPP-PLUG

BSPP 60° male cone plug

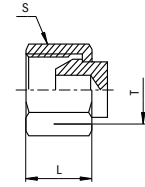


THREAD	LENGTH	HEX/FLATS	WORKING PRESSURE	ADAPTOR
T	L	S	WP	REF.
BSPP	mm	mm	bar	BSP
1/8"-28	16.0	14.0	350	2MBSPP-PLUG
1/4"-19	18.0	19.0	350	4MBSPP-PLUG
3/8"-19	20.0	22.0	350	6MBSPP-PLUG
1/2"-14	24.0	27.0	315	8MBSPP-PLUG
5/8"-14	26.0	30.0	315	10MBSPP-PLUG
3/4"-14	27.0	32.0	250	12MBSPP-PLUG
1"-11	32.0	41.0	200	16MBSPP-PLUG
1 1/4"-11	34.0	50.0	160	20MBSPP-PLUG
1 1/2"-11	39.0	55.0	125	24MBSPP-PLUG
2"-11	45.0	70.0	125	32MBSPP-PLUG



BSP FBSPPX-CAP

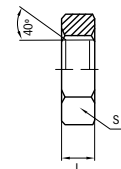
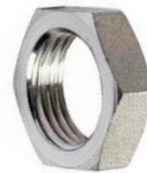
BSP 60° female swivel cap



THREAD	LENGTH	HEX/FLATS	WORKING PRESSURE	ADAPTOR
T	L	S	WP	REF.
BSP F	mm	mm	bar	BSP
1/8"-28	14.0	14.0	350	2FBSPPX-CAP
1/4"-19	16.0	19.0	350	4FBSPPX-CAP
3/8"-19	17.5	22.0	350	6FBSPPX-CAP
1/2"-14	20.5	27.0	315	8FBSPPX-CAP
5/8"-14	22.0	30.0	315	10FBSPPX-CAP
3/4"-14	25.0	32.0	250	12FBSPPX-CAP
1"-11	29.0	41.0	200	16FBSPPX-CAP
1.1/4"-11	29.2	50.0	160	20FBSPPX-CAP
1.1/2"-11	32.0	55.0	125	24FBSPPX-CAP
2"-11	34.0	70.0	125	32FBSPPX-CAP

BSP LOCKNUT

BSP locknut for bulkhead



THREAD	LENGTH	HEX/FLATS	WORKING PRESSURE	ADAPTOR
T	L	S	WP	REF.
BSP	mm	mm	bar	BSP
1/8"-28	5.5	14.0	350	2BSP-LOCKNUT
3/8"-19	7.0	22.0	350	6BSP-LOCKNUT
1/2"-14	8.0	27.0	315	8BSP-LOCKNUT







DRIVEN BY POSSIBILITY™

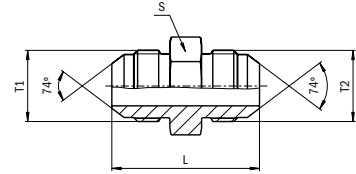
JIC ADAPTORS





JIC MJ-MJ

JIC 37° male / male

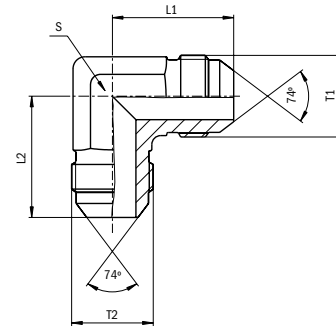


ADAPTOR	THREAD		LENGTH	HEX/FLATS	WORKING PRESSURE
REF.	T1	T2	L	S	WP
JIC	JIC	JIC	mm	mm	bar
4MJ-2MJ	7/16"-20	5/16"-24	32.3	12.0	350
4MJ-4MJ	7/16"-20	7/16"-20	34.8	12.0	350
5MJ-4MJ	1/2"-20	7/16"-20	35.0	14.0	350
5MJ-5MJ	1/2"-20	1/2"-20	34.8	14.0	350
6MJ-4MJ	9/16"-18	7/16"-20	35.7	17.0	350
6MJ-6MJ	9/16"-18	9/16"-18	35.8	17.0	350
8MJ-6MJ	3/4"-16	9/16"-18	38.6	22.0	310
8MJ-8MJ	3/4"-16	3/4"-16	41.2	22.0	310
10MJ-8MJ	7/8"-14	3/4"-16	45.2	24.0	240
10MJ-10MJ	7/8"-14	7/8"-14	47.8	24.0	240
12MJ-12MJ	1.1/16"-12	1.1/16"-12	54.9	27.0	240
16MJ-16MJ	1.5/16"-12	1.5/16"-12	57.2	36.0	210



JIC MJ-MJ90

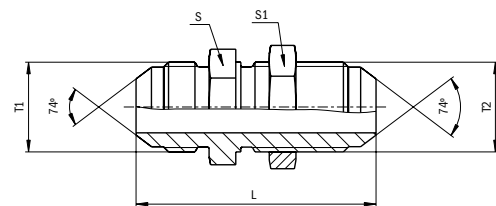
JIC 37° male / male 90° elbow



ADAPTOR	THREAD		LENGTH		HEX/FLATS	WORKING PRESSURE
	REF.	T1	T2	L1	L2	S
JIC	JIC	JIC	mm	mm	mm	bar
4MJ-4MJ90	7/16"-20	7/16"-20	22.6	22.6	11.0	350
5MJ-5MJ90	1/2"-20	1/2"-20	24.1	24.1	14.0	350
6MJ-4MJ90	9/16"-18	7/16"-20	26.9	26.7	14.0	350
6MJ-6MJ90	9/16"-18	9/16"-18	26.9	26.9	14.0	350
8MJ-6MJ90	3/4"-16	9/16"-18	31.8	29.0	19.0	310
8MJ-8MJ90	3/4"-16	3/4"-16	31.8	31.8	19.0	310
10MJ-8MJ90	7/8"-14	3/4"-16	36.8	33.8	22.0	240
10MJ-10MJ90	7/8"-14	7/8"-14	36.8	36.8	22.0	240
12MJ-12MJ90	1.1/16"-12	1.1/16"-12	42.2	42.2	27.0	240
16MJ-16MJ90	1.5/16"-12	1.5/16"-12	46.0	46.0	33.0	210

JIC MJ-MJBKHD

JIC 37° male / male bulkhead union with lock nut

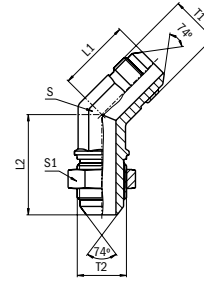


ADAPTOR	THREAD		LENGTH	HEX/FLATS	WORKING PRESSURE
	REF.	T1	T2	L	S & S1
JIC	JIC	JIC	mm	mm	bar
4MJ-4MJBKHD	7/16"-20	7/16"-20	52.6	17.0	350
5MJ-5MJBKHD	1/2"-20	1/2"-20	52.6	19.0	350
6MJ-6MJBKHD	9/16"-18	9/16"-18	55.4	22.0	350
8MJ-8MJBKHD	3/4"-16	3/4"-16	62.0	24.0	310
10MJ-10MJBKHD	7/8"-14	7/8"-14	69.6	30.0	240
12MJ-12MJBKHD	1.1/16"-12	1.1/16"-12	78.5	36.0	240
16MJ-16MJBKHD	1.5/16"-12	1.5/16"-12	79.8	41.0	210



JIC MJ-MJBKHD45

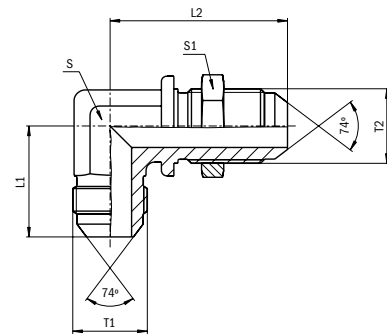
JIC 37° male / male bulkhead 45° union elbow with lock nut



ADAPTOR		THREAD		LENGTH		HEX/FLATS		WORKING PRESSURE
REF.	T1	T2	L1	L2	S	S1	WP	
JIC	JIC	JIC	mm	mm	mm	mm	bar	
4MJ-4MJBKHD45	7/16"-20	7/16"-20	18.3	38.9	11.0	17.0	350	
5MJ-5MJBKHD45	1/2"-20	1/2"-20	19.6	42.2	14.0	19.0	350	
6MJ-6MJBKHD45	9/16"-18	9/16"-18	21.1	42.4	14.0	22.0	350	
8MJ-8MJBKHD45	3/4"-16	3/4"-16	24.9	49.3	19.0	24.0	310	
10MJ-10MJBKHD45	7/8"-14	7/8"-14	28.2	55.1	22.0	30.0	240	
12MJ-12MJBKHD45	1.1/16"-12	1.1/16"-12	32.5	62.0	27.0	36.0	240	
16MJ-16MJBKHD45	1.5/16"-12	1.5/16"-12	37.3	65.0	33.0	41.0	210	

JIC MJ-MJBKHD90

JIC 37° male / male bulkhead 90° union elbow with lock nut



ADAPTOR		THREAD		LENGTH		HEX/FLATS		WORKING PRESSURE
REF.	T1	T2	L1	L2	S	S1	WP	
JIC	JIC	JIC	mm	mm	mm	mm	bar	
4MJ-4MJBKHD90	7/16"-20	7/16"-20	24.6	40.4	11.0	17.0	350	
5MJ-5MJBKHD90	1/2"-20	1/2"-20	26.9	43.7	14.0	19.0	350	
6MJ-6MJBKHD90	9/16"-18	9/16"-18	26.9	46.0	14.0	22.0	350	
8MJ-8MJBKHD90	3/4"-16	3/4"-16	34.5	53.6	19.0	24.0	310	
10MJ-10MJBKHD90	7/8"-14	7/8"-14	39.6	60.7	22.0	30.0	240	
12MJ-12MJBKHD90	1.1/16"-12	1.1/16"-12	45.2	67.8	27.0	36.0	240	
16MJ-16MJBKHD90	1.5/16"-12	1.5/16"-12	49.3	71.1	33.0	41.0	210	

INTRODUCTION

BSP ADAPTORS

JIC ADAPTORS

ORFS ADAPTORS

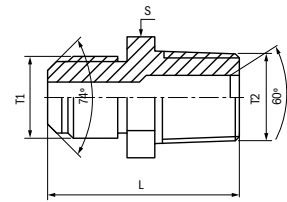
PRESSURE WASH ADAPTORS

QUICK-LOK ADAPTORS



JIC MJ-MBSPT

JIC 37° male / male BSP taper

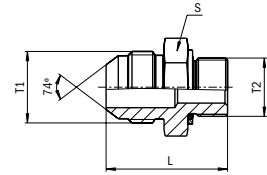


THREAD		LENGTH	HEX/FLATS	WORKING PRESSURE	ADAPTOR
T1	T2	L	S	WP	REF.
JIC	BSPT	mm	mm	bar	JIC
7/8"-14	3/4"-14	48.5	30.0	240	10MJ-12MBSPT



JIC MJ-MBSPPCOR

JIC 37° male / male BSPP with O-Ring and retaining Ring



THREAD		LENGTH	HEX/FLATS	WORKING PRESSURE	ADAPTOR
T1	T2	L	S	WP	REF.
JIC	BSPP	mm	mm	bar	JIC
7/16"-20	1/8"-28	30.0	14.0	200	4MJ-2MBSPPCOR
7/16"-20	1/4"-19	35.0	19.0	200	4MJ-4MBSPPCOR
7/16"-20	3/8"-19	35.0	22.0	200	4MJ-6MBSPPCOR
7/16"-20	1/2"-14	38.0	30.0	200	4MJ-8MBSPPCOR
9/16"-18	1/8"-28	29.5	17.0	200	6MJ-2MBSPPCOR
9/16"-18	1/4"-19	32.0	19.0	200	6MJ-4MBSPPCOR
9/16"-18	3/8"-19	34.5	22.0	200	6MJ-6MBSPPCOR
9/16"-18	1/2"-14	38.0	27.0	200	6MJ-8MBSPPCOR
3/4"-16	1/4"-19	35.0	19.0	200	8MJ-4MBSPPCOR
3/4"-16	3/8"-19	36.0	22.0	200	8MJ-6MBSPPCOR
3/4"-16	1/2"-14	41.5	27.0	200	8MJ-8MBSPPCOR
3/4"-16	3/4"-14	45.0	36.0	200	8MJ-12MBSPPCOR
3/4"-16	1"-11	48.0	46.0	200	8MJ-16MBSPPCOR
7/8"-14	3/8"-19	40.5	24.0	200	10MJ-6MBSPPCOR
7/8"-14	1/2"-14	44.0	27.0	200	10MJ-8MBSPPCOR
7/8"-14	3/4"-14	46.5	36.0	200	10MJ-12MBSPPCOR
1.1/16"-12	1/2"-14	46.0	30.0	200	12MJ-8MBSPPCOR
1.1/16"-12	3/4"-14	49.2	36.0	200	12MJ-12MBSPPCOR
1.5/16"-12	3/4"-14	48.5	36.0	200	16MJ-12MBSPPCOR
1.5/16"-12	1"-11	53.5	46.0	200	16MJ-16MBSPPCOR
1.5/16"-12	1.1/4"-11	57.0	50.0	160	16MJ-20MBSPPCOR
1.5/8"-12	1.1/4"-11	57.0	50.0	160	20MJ-20MBSPPCOR
1.7/8"-12	1.1/4"-11	61.5	55.0	140	24MJ-20MBSPPCOR

INTRODUCTION

BSPP ADAPTORS

JIC ADAPTORS

ORFS ADAPTORS

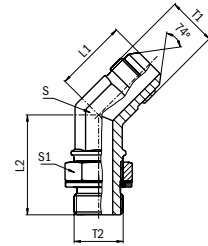
PRESSURE WASH ADAPTORS

QUICK-LOK ADAPTORS



JIC MJ-MBSPPACOR45

JIC 37° male / adjustable male BSPP 45° elbow
with O-Ring and retaining Ring

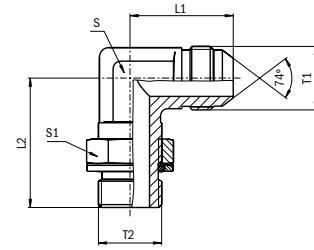


THREAD		LENGTH		HEX/FLATS		WORKING PRESSURE	ADAPTOR
T1	T2	L1	L2	S	S1	WP	REF.
JIC	BSPP	mm	mm	mm	mm	bar	JIC
7/16"-20	1/8"-28	18.0	26.5	11.0	14.0	200	4MJ-2MBSPPACOR45
7/16"-20	1/4"-19	21.0	29.0	14.0	19.0	200	4MJ-4MBSPPACOR45
9/16"-18	1/4"-19	21.0	29.0	14.0	19.0	200	6MJ-4MBSPPACOR45
9/16"-18	3/8"-19	22.0	33.0	19.0	22.0	200	6MJ-6MBSPPACOR45
9/16"-18	1/2"-14	22.0	38.5	22.0	27.0	200	6MJ-8MBSPPACOR45
3/4"-16	3/8"-19	25.0	33.0	19.0	22.0	200	8MJ-6MBSPPACOR45
3/4"-16	1/2"-14	25.5	38.5	22.0	27.0	200	8MJ-8MBSPPACOR45
7/8"-14	1/2"-14	28.0	38.5	22.0	27.0	200	10MJ-8MBSPPACOR45
7/8"-14	3/4"-14	30.0	44.0	27.0	36.0	200	10MJ-12MBSPPACOR45
1.1/16"-12	3/4"-14	32.5	44.0	27.0	36.0	200	12MJ-12MBSPPACOR45
1.5/16"-12	1"-11	37.0	47.0	33.0	41.0	200	16MJ-16MBSPPACOR45



JIC MJ-MBSPPACOR90

JIC 37° male / adjustable male BSPP 90° elbow with O-Ring and retaining Ring



THREAD		LENGTH		HEX/FLATS		WORKING PRESSURE	ADAPTOR
T1	T2	L1	L2	S	S1	WP	REF.
JIC	BSPP	mm	mm	mm	mm	bar	JIC
7/16"-20	1/8"-28	22.5	26.0	11.0	14.0	200	4MJ-2MBSPPACOR90
7/16"-20	1/4"-19	27.0	31.5	14.0	19.0	200	4MJ-4MBSPPACOR90
7/16"-20	3/8"-19	28.5	36.5	19.0	22.0	200	4MJ-6MBSPPACOR90
1/2"-20	1/8"-28	24.0	28.0	14.0	14.0	200	5MJ-2MBSPPACOR90
1/2"-20	1/4"-19	27.0	31.0	14.0	19.0	200	5MJ-4MBSPPACOR90
1/2"-20	3/8"-19	28.5	36.5	19.0	22.0	200	5MJ-6MBSPPACOR90
9/16"-18	1/4"-19	27.0	31.5	14.0	19.0	200	6MJ-4MBSPPACOR90
9/16"-18	3/8"-19	28.5	36.5	19.0	22.0	200	6MJ-6MBSPPACOR90
9/16"-18	1/2"-14	31.0	43.0	22.0	27.0	200	6MJ-8MBSPPACOR90
3/4"-16	1/4"-19	31.5	33.5	19.0	19.0	200	8MJ-4MBSPPACOR90
3/4"-16	3/8"-19	31.5	36.5	19.0	22.0	200	8MJ-6MBSPPACOR90
3/4"-16	1/2"-14	34.0	43.0	22.0	27.0	200	8MJ-8MBSPPACOR90
3/4"-16	3/4"-14	37.0	49.0	27.0	36.0	200	8MJ-12MBSPPACOR90
7/8"-14	3/8"-19	36.5	39.5	22.0	22.0	200	10MJ-6MBSPPACOR90
7/8"-14	1/2"-14	36.5	43.0	22.0	27.0	200	10MJ-8MBSPPACOR90
7/8"-14	3/4"-14	39.5	49.0	27.0	36.0	200	10MJ-12MBSPPACOR90
1.1/16"-12	1/2"-14	42.0	45.5	27.0	27.0	200	12MJ-8MBSPPACOR90
1.1/16"-12	3/4"-14	42.0	49.0	27.0	36.0	200	12MJ-12MBSPPACOR90
1.1/16"-12	1"-11	44.7	52.0	33.0	41.0	200	12MJ-16MBSPPACOR90
1.5/16"-12	3/4"-14	46.0	52.0	33.0	36.0	200	16MJ-12MBSPPACOR90
1.5/16"-12	1"-11	46.0	52.0	33.0	41.0	200	16MJ-16MBSPPACOR90
1.5/16"-12	1.1/4"-11	51.0	57.0	41.0	50.0	160	16MJ-20MBSPPACOR90
1.5/8"-12	1.1/4"-11	52.0	58.0	41.0	50.0	160	20MJ-20MBSPPACOR90
1.7/8"-12	1.1/2"-11	59.0	61.0	48.0	55.0	140	24MJ-24MBSPPACOR90

INTRODUCTION

BSPP ADAPTORS

JIC ADAPTORS

ORFS ADAPTORS

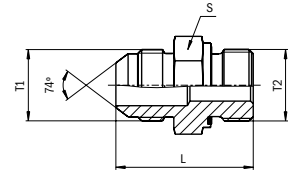
PRESSURE WASH ADAPTORS

QUICK-LOK ADAPTORS



JIC MJ-MBSPPWD

JIC 37° male / male BSPP with captive seal

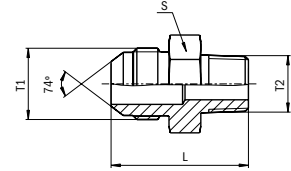


THREAD		LENGTH	HEX/FLATS	WORKING PRESSURE	ADAPTOR
T1	T2	L	S	WP	REF.
JIC	BSPP	mm	mm	bar	JIC
7/16"-20	1/8"-28	29.0	14.0	315	4MJ-2MBSPPWD
7/16"-20	1/4"-19	34.0	19.0	315	4MJ-4MBSPPWD
7/16"-20	3/8"-19	34.0	22.0	315	4MJ-6MBSPPWD
7/16"-20	1/2"-14	39.5	27.0	315	4MJ-8MBSPPWD
1/2"-20	1/8"-28	30.5	17.0	315	5MJ-2MBSPPWD
1/2"-20	1/4"-19	34.0	19.0	315	5MJ-4MBSPPWD
1/2"-20	3/8"-19	36.0	22.0	315	5MJ-6MBSPPWD
9/16"-18	1/8"-28	30.0	17.0	315	6MJ-2MBSPPWD
9/16"-18	1/4"-19	34.0	19.0	315	6MJ-4MBSPPWD
9/16"-18	3/8"-19	34.5	22.0	315	6MJ-6MBSPPWD
9/16"-18	1/2"-14	38.0	27.0	250	6MJ-8MBSPPWD
9/16"-18	3/4"-14	45.0	32.0	250	6MJ-12MBSPPWD
3/4"-16	1/4"-19	38.5	19.0	310	8MJ-4MBSPPWD
3/4"-16	3/8"-19	37.5	22.0	310	8MJ-6MBSPPWD
3/4"-16	1/2"-14	39.5	27.0	250	8MJ-8MBSPPWD
3/4"-16	3/4"-14	46.7	32.0	250	8MJ-12MBSPPWD
3/4"-16	1"-11	48.0	41.0	250	8MJ-16MBSPPWD
7/8"-14	3/8"-19	41.3	24.0	240	10MJ-6MBSPPWD
7/8"-14	1/2"-14	45.0	27.0	240	10MJ-8MBSPPWD
7/8"-14	3/4"-14	49.0	32.0	240	10MJ-12MBSPPWD
7/8"-14	1"-11	50.8	41.0	240	10MJ-16MBSPPWD
1.1/16"-12	1/2"-14	48.0	27.0	240	12MJ-8MBSPPWD
1.1/16"-12	3/4"-14	52.0	32.0	240	12MJ-12MBSPPWD
1.1/16"-12	1"-11	53.5	41.0	240	12MJ-16MBSPPWD
1.1/16"-12	1.1/4"-11	56.0	50.0	160	12MJ-20MBSPPWD
1.5/16"-12	3/4"-14	52.5	36.0	210	16MJ-12MBSPPWD
1.5/16"-12	1"-11	55.0	41.0	210	16MJ-16MBSPPWD
1.5/16"-12	1.1/4"-11	57.5	50.0	160	16MJ-20MBSPPWD
1.5/8"-12	3/4"-14	54.5	46.0	170	20MJ-12MBSPPWD
1.5/8"-12	1"-11	58.5	46.0	170	20MJ-16MBSPPWD
1.5/8"-12	1.1/4"-11	58.5	50.0	160	20MJ-20MBSPPWD
1.5/8"-12	1.1/2"-11	63.5	55.0	160	20MJ-24MBSPPWD



JIC MJ-MP

JIC 37° male / male NPT



ADAPTOR	THREAD		LENGTH	HEX/FLATS	WORKING PRESSURE
	REF.	T	T2	L	S
JIC	JIC	NPT	mm	mm	bar
4MJ-2MP	7/16"-20	1/8"-27	31.0	14.0	345
4MJ-4MP	7/16"-20	1/4"-18	36.1	14.0	275
4MJ-6MP	7/16"-20	3/8"-18	36.1	19.0	210
5MJ-2MP	1/2"-20	1/8"-27	31.0	14.0	345
5MJ-4MP	1/2"-20	1/4"-18	36.1	14.0	275
6MJ-4MP	9/16"-18	1/4"-18	36.3	17.0	275
6MJ-6MP	9/16"-18	3/8"-18	36.3	19.0	210
6MJ-8MP	9/16"-18	1/2"-14	42.9	22.0	210
8MJ-6MP	3/4"-16	3/8"-18	38.9	22.0	210
8MJ-8MP	3/4"-16	1/2"-14	45.5	22.0	210
8MJ-12MP	3/4"-16	3/4"-14	47.0	27.0	170
10MJ-6MP	7/8"-14	3/8"-18	43.2	24.0	210
10MJ-8MP	7/8"-14	1/2"-14	48.0	24.0	210
10MJ-12MP	7/8"-14	3/4"-14	49.5	27.0	170
10MJ-16MP	7/8"-14	1"-11.5	54.6	36.0	140
12MJ-12MP	1.1/16"-12	3/4"-14	52.3	27.0	170
12MJ-16MP	1.1/16"-12	1"-11.5	57.2	36.0	140
16MJ-16MP	1.5/16"-12	1"-11.5	58.4	36.0	140

INTRODUCTION

BSP ADAPTORS

JIC ADAPTORS

ORFS ADAPTORS

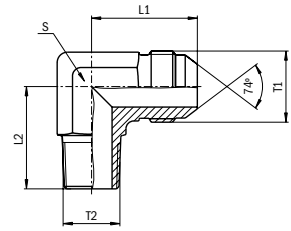
PRESSURE WASH ADAPTORS

QUICK-LOK ADAPTORS



JIC MJ-MP90

JIC 37° male / male NPT 90° elbow

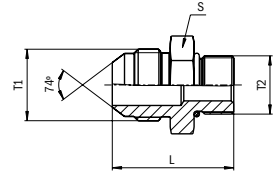


ADAPTOR REF.	THREAD		LENGTH		HEX/FLATS	WORKING PRESSURE
	T	T2	L1	L2	S	WP
JIC	JIC	NPT	mm	mm	mm	bar
4MJ-2MP90	7/16"-20	1/8"-27	22.6	19.8	11.0	345
4MJ-4MP90	7/16"-20	1/4"-18	26.7	27.7	14.0	275
6MJ-4MP90	9/16"-18	1/4"-18	26.9	27.7	14.0	275
6MJ-6MP90	9/16"-18	3/8"-18	29.0	31.0	19.0	210
6MJ-8MP90	9/16"-18	1/2"-14	31.0	37.3	22.0	210
8MJ-8MP90	3/4"-16	1/2"-14	33.8	37.3	22.0	210
10MJ-8MP90	7/8"-14	1/2"-14	36.8	37.3	22.0	210
12MJ-12MP90	1.1/16"-12	3/4"-14	42.2	40.4	27.0	170
16MJ-16MP90	1.5/16"-12	1"-11.5	46.0	50.0	33.0	140



JIC MJ-MB

JIC 37° male / male SAE 'O' Ring bos



THREAD		LENGTH	HEX/FLATS	WORKING PRESSURE	ADAPTOR
T1	T2	L	S	WP	REF.
JIC	SAE O	mm	mm	bar	JIC
7/16"-20	7/16"-20 UNF	31.2	14.0	315	4MJ-4MB
7/16"-20	9/16"-18 UNF	32.8	17.0	315	4MJ-6MB
7/16"-20	3/4"-16 UNF	34.8	22.0	315	4MJ-8MB
7/16"-20	7/8"-14 UNF	37.9	27.0	250	4MJ-10MB
1/2"-20	7/16"-20 UNF	31.2	17.0	315	5MJ-4MB
1/2"-20	1/2"-20 UNF	31.2	17.0	315	5MJ-5MB
1/2"-20	9/16"-18 UNF	32.8	17.0	315	5MJ-6MB
9/16"-18	7/16"-20 UNF	32.3	17.0	315	6MJ-4MB
9/16"-18	9/16"-18 UNF	33.0	17.0	315	6MJ-6MB
9/16"-18	3/4"-16 UNF	35.0	22.0	315	6MJ-8MB
9/16"-18	7/8"-14 UNF	38.0	27.0	250	6MJ-10MB
9/16"-18	1.1/16"-12 UN	42.2	32.0	250	6MJ-12MB
3/4"-16	9/16"-18 UNF	36.6	19.0	310	8MJ-6MB
3/4"-16	3/4"-16 UNF	37.6	22.0	310	8MJ-8MB
3/4"-16	7/8"-14 UNF	40.6	27.0	250	8MJ-10MB
3/4"-16	1.1/16"-12 UN	44.7	32.0	250	8MJ-12MB
3/4"-16	1.5/16"-12 UN	45.5	41.0	200	8MJ-16MB
7/8"-14	3/4"-16 UNF	41.7	24.0	240	10MJ-8MB
7/8"-14	7/8"-14 UNF	43.2	27.0	240	10MJ-10MB
7/8"-14	1.1/16"-12 UN	47.2	32.0	240	10MJ-12MB
1.1/16"-12	3/4"-16 UNF	49.3	30.0	240	12MJ-8MB
1.1/16"-12	7/8"-14 UNF	47.8	30.0	240	12MJ-10MB
1.1/16"-12	1.1/16"-12 UN	50.0	32.0	240	12MJ-12MB
1.1/16"-12	1.5/16"-12 UN	50.6	41.0	200	12MJ-16MB
1.5/16"-12	1.1/16"-12 UN	51.8	36.0	210	16MJ-12MB
1.5/16"-12	1.5/16"-12 UN	51.8	41.0	200	16MJ-16MB
1.5/16"-12	1.5/8"-12 UN	53.9	50.0	160	16MJ-20MB
1.5/8"-12	1.1/16"-12 UN	58.4	46.0	170	20MJ-12MB

INTRODUCTION

BSF ADAPTORS

JIC ADAPTORS

ORFS ADAPTORS

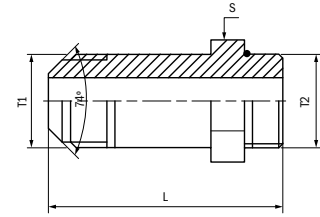
PRESSURE WASH ADAPTORS

QUICK-LOK ADAPTORS



JIC MJ-MB LONG

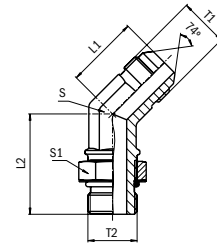
JIC 37° male / male SAE 'O' Ring boss long version



THREAD		LENGTH		HEX/FLATS		WORKING PRESSURE	ADAPTOR
T1	T2	L	S	WP	REF.		
JIC	SAE O	mm	mm	bar	JIC		
7/16"-20	7/16"-20 UNF	52.8	14.0	315	4MJ-4MB LONG		
9/16"-18	9/16"-18 UNF	58.5	17.0	315	6MJ-6MB LONG		

JIC MJ-MBA45

JIC 37° male / adjustable male SAE 'O' Ring boss 45° elbow

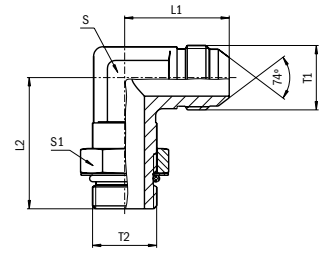


THREAD		LENGTH		HEX/FLATS		WORKING PRESSURE	ADAPTOR
T1	T2	L1	L2	S	S1	WP	REF.
JIC	SAE O	mm	mm	mm	mm	bar	JIC
7/16"-20	7/16"-20 UNF	18.3	26.7	11.0	14.0	315	4MJ-4MBA45
7/16"-20	9/16"-18 UNF	20.8	29.0	14.0	19.0	315	4MJ-6MBA45
9/16"-18	9/16"-18 UNF	21.1	29.0	14.0	19.0	315	6MJ-6MBA45
9/16"-18	3/4"-16 UNF	22.1	33.0	19.0	22.0	315	6MJ-8MBA45
3/4"-16	9/16"-18 UNF	24.9	29.7	19.0	19.0	310	8MJ-6MBA45
3/4"-16	3/4"-16 UNF	24.9	33.0	19.0	22.0	310	8MJ-8MBA45
3/4"-16	7/8"-14 UNF	25.2	38.6	22.0	27.0	250	8MJ-10MBA45
7/8"-14	3/4"-16 UNF	28.2	34.5	22.0	22.0	240	10MJ-8MBA45
7/8"-14	7/8"-14 UNF	28.2	38.6	22.0	27.0	240	10MJ-10MBA45
1.1/16"-12	1.1/16"-12 UN	32.5	43.9	27.0	32.0	240	12MJ-12MBA45
1.5/16"-12	1.5/16"-12 UN	37.3	47.2	33.0	41.0	200	16MJ-16MBA45



JIC MJ-MBA90

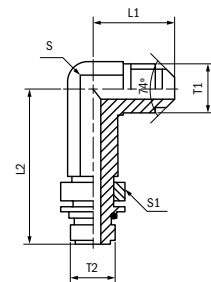
JIC 37° male / adjustable male SAE 'O' Ring boss 90° elbow



THREAD		LENGTH		HEX/FLATS		WORKING PRESSURE	ADAPTOR
T1	T2	L1	L2	S	S1	WP	REF.
JIC	SAE O	mm	mm	mm	mm	bar	JIC
7/16"-20	7/16"-20 UNF	22.6	26.1	11.0	14.0	315	4MJ-4MBA90
7/16"-20	9/16"-18 UNF	26.7	31.8	14.0	19.0	315	4MJ-6MBA90
1/2"-20	1/2"-20 UNF	24.1	28.7	14.0	17.0	315	5MJ-5MBA90
9/16"-18	7/16"-20 UNF	26.9	30.2	14.0	14.0	315	6MJ-4MBA90
9/16"-18	9/16"-18 UNF	26.9	31.8	14.0	19.0	315	6MJ-6MBA90
9/16"-18	3/4"-16 UNF	29.0	36.8	19.0	22.0	315	6MJ-8MBA90
3/4"-16	9/16"-18 UNF	31.8	33.8	19.0	19.0	310	8MJ-6MBA90
3/4"-16	3/4"-16 UNF	31.8	36.8	19.0	22.0	310	8MJ-8MBA90
3/4"-16	7/8"-14 UNF	33.8	43.2	22.0	27.0	250	8MJ-10MBA90
7/8"-14	7/8"-14 UNF	36.8	43.2	22.0	27.0	240	10MJ-10MBA90
7/8"-14	1.1/16"-12 UN	39.1	49.3	27.0	32.0	240	10MJ-12MBA90
1.1/16"-12	1.1/16"-12 UN	42.2	49.3	27.0	32.0	240	12MJ-12MBA90
1.1/16"-12	1.5/16"-12 UN	44.7	52.1	33.0	41.0	200	12MJ-16MBA90
1.5/16"-12	1.5/16"-12 UN	46.0	52.1	33.0	41.0	200	16MJ-16MBA90

JIC MJ-MBA90 LONG

JIC 37° male / adjustable male SAE 'O' Ring boss 90° elbow long version



THREAD		LENGTH		HEX/FLATS		WORKING PRESSURE	ADAPTOR
T1	T2	L1	L2	S	S1	WP	REF.
JIC	SAE O	mm	mm	mm	mm	bar	JIC
7/16"-20	7/16"-20 UNF	22.6	43.9	11.0	14.0	315	4MJ-4MBA90 LONG

INTRODUCTION

BSP ADAPTORS

JIC ADAPTORS

ORFS ADAPTORS

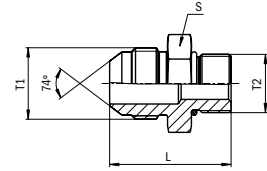
PRESSURE WASH ADAPTORS

QUICK-LOK ADAPTORS



JIC MJ-MMOR

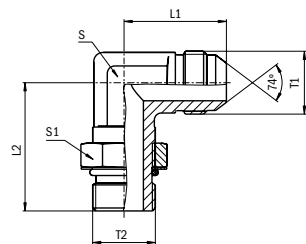
JIC 37° male / male metric with O-Ring



THREAD		LENGTH		HEX/FLATS	WORKING PRESSURE	ADAPTOR
T1	T2	L	S	WP	REF.	
JIC	METRIC	mm	mm	bar	JIC	
7/16"-20	M10x1	30.0	14.0	250	4MJ-10MMOR	
9/16"-18	M14x1.5	33.5	19.0	250	6MJ-14MMOR	
9/16"-18	M16x1.5	35.0	22.0	250	6MJ-16MMOR	
9/16"-18	M18x1.5	37.0	24.0	250	6MJ-18MMOR	
3/4"-16	M16x1.5	38.0	22.0	250	8MJ-16MMOR	
3/4"-16	M18x1.5	39.5	24.0	250	8MJ-18MMOR	
7/8"-14	M14x1.5	41.0	24.0	240	10MJ-14MMOR	
7/8"-14	M18x1.5	42.0	24.0	240	10MJ-18MMOR	
7/8"-14	M22x1.5	44.5	27.0	160	10MJ-22MMOR	
1.1/16"-12	M22x1.5	45.5	27.0	160	12MJ-22MMOR	
1.1/16"-12	M27x2	51.0	32.0	160	12MJ-27MMOR	

JIC MJ-MMAOR90

JIC 37° male / adjustable male metric 90° elbow with O-Ring

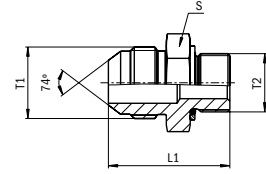


THREAD		LENGTH		HEX/FLATS		WORKING PRESSURE	ADAPTOR
T1	T2	L1	L2	S	S1	WP	REF.
JIC	METRIC	mm	mm	mm	mm	bar	JIC
1/2"-20	M12x1.5	27.0	31.5	14.0	17.0	250	5MJ-12MMAOR90
9/16"-18	M14x1.5	27.0	32.5	14.0	19.0	250	6MJ-14MMAOR90
3/4"-16	M18x1.5	31.5	37.0	19.0	24.0	250	8MJ-18MMAOR90
7/8"-14	M18x1.5	36.5	41.5	22.0	24.0	240	10MJ-18MMAOR90
7/8"-14	M22x1.5	36.5	43.0	22.0	27.0	240	10MJ-22MMAOR90
1.1/16"-12	M22x1.5	42.0	45.5	27.0	27.0	240	12MJ-22MMAOR90
1.1/16"-12	M27x2	42.0	51.5	27.0	32.0	240	12MJ-27MMAOR90



JIC MJ-MMCOR

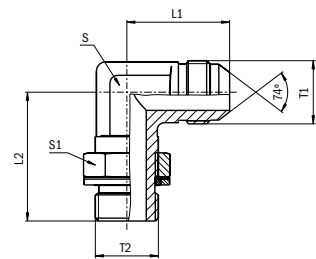
JIC 37° male / male metric with O-Ring and retaining Ring



THREAD		LENGTH		HEX/FLATS		WORKING PRESSURE	ADAPTOR
T1	T2	L	S	WP	REF.	JIC	
JIC	METRIC	mm	mm	bar	JIC		
7/16"-18	M14x1.5	33.5	19.0	250	6MJ-14MMCOR		
7/16"-18	M18x1.5	37.0	24.0	250	6MJ-18MMCOR		

JIC MJ-MMACOR90

JIC 37° male / adjustable male metric 90° elbow with O-Ring and retaining Ring



THREAD		LENGTH		HEX/FLATS		WORKING PRESSURE	ADAPTOR
T1	T2	L1	L2	S	S1	WP	REF.
JIC	METRIC	mm	mm	mm	mm	bar	JIC
7/16"-20	M10x1	22.5	27.5	11.0	14.0	250	4MJ-10MMACOR90

INTRODUCTION

BSF ADAPTORS

JIC ADAPTORS

ORFS ADAPTORS

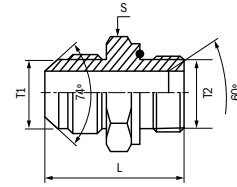
PRESSURE WASH ADAPTORS

QUICK-LOK ADAPTORS



JIC MJ-MMWD

JIC 37° male / male metric with captive seal

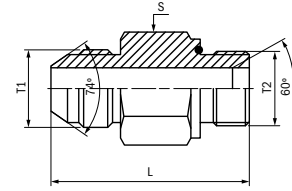


THREAD		LENGTH	HEX/FLATS	WORKING PRESSURE	ADAPTOR
T1	T2	L	S	WP	REF.
JIC	METRIC	mm	mm	bar	JIC
3/16"-18	M12x1.5	34.5	17.0	350	6MJ-12MMWD
3/16"-18	M14x1.5	33.0	19.0	350	6MJ-14MMWD
3/16"-18	M16x1.5	36.5	22.0	350	6MJ-16MMWD
3/16"-18	M18x1.5	35.0	24.0	350	6MJ-18MMWD
3/16"-18	M22x1.5	38.2	27.0	350	6MJ-22MMWD
3/4"-16	M14x1.5	38.5	22.0	310	8MJ-14MMWD
3/4"-16	M16x1.5	37.7	22.0	310	8MJ-16MMWD
3/4"-16	M18x1.5	39.0	24.0	310	8MJ-18MMWD
3/4"-16	M22x1.5	40.7	27.0	310	8MJ-22MMWD
7/8"-14	M16x1.5	41.0	24.0	240	10MJ-16MMWD
7/8"-14	M18x1.5	41.5	24.0	240	10MJ-18MMWD
7/8"-14	M22x1.5	43.5	27.0	240	10MJ-22MMWD
7/8"-14	M27x2	47.3	32.0	240	10MJ-27MMWD
1.1/16"-12	M22x1.5	46.5	30.0	240	12MJ-22MMWD
1.1/16"-12	M26x1.5	50.0	32.0	160	12MJ-26MMWD
1.1/16"-12	M33x2	50.5	41.0	240	12MJ-33MMWD
1.5/16"-12	M33x2	51.5	41.0	210	16MJ-33MMWD
1.5/8"-12	M33x2	56.5	46.0	170	20MJ-33MMWD
1.5/8"-12	M42x2	59.5	50.0	170	20MJ-42MMWD
1.5/8"-12	M48x2	66.0	55.0	170	20MJ-48MMWD



JIC MJ-MMWD LONG

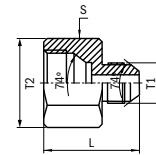
JIC 37° male / male metric with captive seal long version



THREAD		LENGTH	HEX/FLATS	WORKING PRESSURE	ADAPTOR
T1	T2	L	S	WP	REF.
JIC	METRIC	mm	mm	bar	JIC
7/8"-14	M26x1.5	59.0	32.0	160	10MJ-26MMWD LONG
1.5/8"-12	M42x2	88.0	50.0	100	20MJ-42MMWD LONG

JIC MJ-FJ FIXED

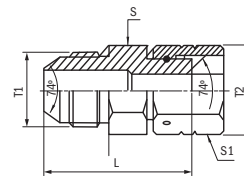
JIC 37° male / female with fixed nut (non swivelling version)



ADAPTOR	THREAD		LENGTH	HEX/FLATS	WORKING PRESSURE
REF.	T1	T2	L	S	WP
JIC	JIC	JIC F	mm	mm	bar
8MJ-8FJ FIXED	3/4"-16	3/4"-16	36.3	24.0	310

JIC MJ-FJX-W/N

JIC 37° male / female with wire-on-nut

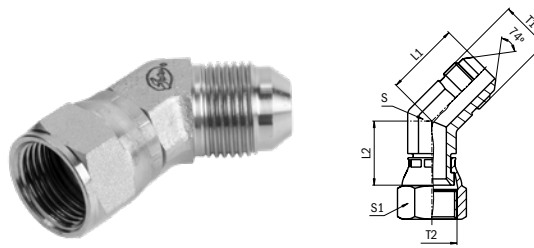


ADAPTOR	THREAD		LENGTH	HEX/FLATS		WORKING PRESSURE
REF.	T1	T2	L	S	S1	WP
JIC	JIC	JIC F	mm	mm	mm	bar
6MJ-6FJX-W/N	9/16"-18	9/16"-18	33.0	17.0	19.0	350
6MJ-8FJX-W/N	9/16"-18	3/4"-16	36.0	22.0	22.0	310
8MJ-6FJX-W/N	3/4"-16	9/16"-18	36.5	22.0	19.0	310
8MJ-8FJX-W/N	3/4"-16	3/4"-16	38.5	22.0	22.0	310
10MJ-8FJX-W/N	7/8"-14	3/4"-16	43.0	24.0	22.0	240
16MJ-16FJX-W/N	1.5/16"-12	1.5/16"-12	50.5	36.0	41.0	210



JIC MJ-FJX45

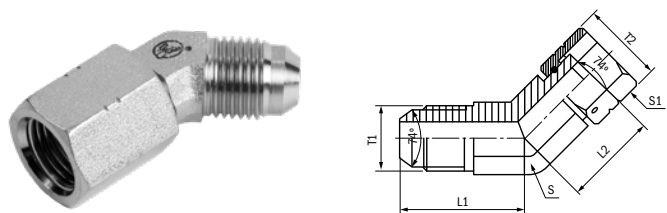
JIC 37° male / female swivel 45° elbow



ADAPTOR REF.	THREAD		LENGTH		HEX/FLATS		WORKING PRESSURE WP
	T1	T2	L1	L2	S	S1	
JIC	JIC	JIC F	mm	mm	mm	mm	bar
4MJ-4FJX45	7/16"-20	7/16"-20	18.3	14.9	11.0	14.0	350
5MJ-5FJX45	1/2"-20	1/2"-20	19.6	15.6	14.0	17.0	350
6MJ-6FJX45	9/16"-18	9/16"-18	21.1	18.9	14.0	19.0	350
8MJ-8FJX45	3/4"-16	3/4"-16	24.9	21.8	19.0	22.0	310
10MJ-10FJX45	7/8"-14	7/8"-14	28.2	28.2	22.0	27.0	240
12MJ-12FJX45	1.1/16"-12	1.1/16"-12	32.5	32.5	27.0	32.0	240
16MJ-16FJX45	1.5/16"-12	1.5/16"-12	37.3	37.3	33.0	41.0	210

JIC MJ-FJX45-W/N

JIC 37° male / female swivel 45° elbow with wire-on-nut

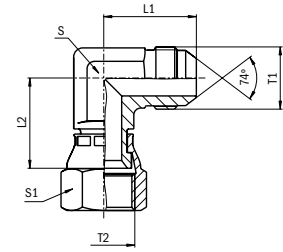


ADAPTOR REF.	THREAD		LENGTH		HEX/FLATS		WORKING PRESSURE WP
	T1	T2	L1	L2	S	S1	
JIC	JIC	JIC F	mm	mm	mm	mm	bar
6MJ-6FJX45-W/N	9/16"-18	9/16"-18	21.1	18.9	14.0	19.0	350
10MJ-10FJX45-W/N	7/8"-14	7/8"-14	28.2	23.9	22.0	27.0	240



JIC MJ-FJX90

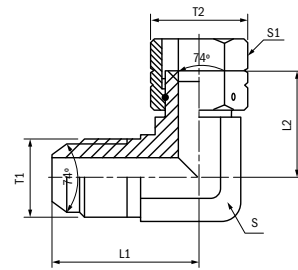
JIC 37° male / female swivel 90° elbow



ADAPTOR	THREAD		LENGTH		HEX/FLATS		WORKING PRESSURE
	REF.	T1	T2	L1	L2	S	
JIC	JIC	JIC F	mm	mm	mm	mm	bar
4MJ-4FJX90	7/16"-20	7/16"-20	22.6	16.7	11.0	14.0	350
5MJ-5FJX90	1/2"-20	1/2"-20	24.1	17.4	14.0	17.0	350
6MJ-6FJX90	9/16"-18	9/16"-18	26.9	22.2	14.0	19.0	350
8MJ-8FJX90	3/4"-16	3/4"-16	31.8	24.3	19.0	22.0	310
10MJ-10FJX90	7/8"-14	7/8"-14	36.8	28.5	22.0	27.0	240
12MJ-12FJX90	1.1/16"-12	1.1/16"-12	42.2	30.2	27.0	32.0	240
14MJ-14FJX90	1.3/16"-12	1.3/16"-12	45.7	30.5	33.0	36.0	210
16MJ-16FJX90	1.5/16"-12	1.5/16"-12	46.0	35.7	33.0	41.0	210
20MJ-20FJX90	1.5/8"-12	1.5/8"-12	52.3	42.8	41.0	50.0	170

JIC MJ-FJX90-W/N

JIC 37° male / female swivel 90° elbow with wire-on-nut



ADAPTOR	THREAD		LENGTH		HEX/FLATS		WORKING PRESSURE
	REF.	T1	T2	L1	L2	S	
JIC	JIC	JIC F	mm	mm	mm	mm	bar
6MJ-6FJX90-W/N	9/16"-18	9/16"-18	26.9	22.2	14.0	19.0	350
8MJ-8FJX90-W/N	3/4"-16	3/4"-16	31.8	24.3	19.0	22.0	310
10MJ-10FJX90-W/N	7/8"-14	7/8"-14	36.8	28.5	22.0	27.0	240
12MJ-12FJX90-W/N	1.1/16"-12	1.1/16"-12	42.2	30.2	27.0	32.0	240
16MJ-16FJX90-W/N	1.5/16"-12	1.5/16"-12	46.0	35.7	33.0	41.0	210

INTRODUCTION

BSP ADAPTORS

JIC ADAPTORS

ORFS ADAPTORS

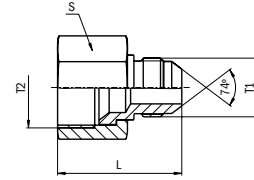
PRESSURE WASH ADAPTORS

QUICK-LOK ADAPTORS



JIC FJX-MJ

JIC 37° female swivel / male tube reducer

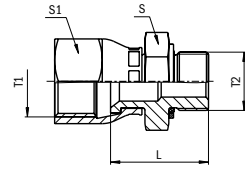


ADAPTOR		THREAD		LENGTH	HEX/FLATS	WORKING PRESSURE
REF.	T1	T2	L	S	WP	
JIC	JIC	JIC F	mm	mm	bar	
6FJX-4MJ	7/16"-20	9/16"-18	24.6	19.0	350	
8FJX-6MJ	9/16"-18	3/4"-16	25.5	22.0	310	
10FJX-4MJ	7/16"-20	7/8"-14	26.1	27.0	240	
10FJX-6MJ	9/16"-18	7/8"-14	28.5	27.0	240	
10FJX-8MJ	3/4"-16	7/8"-14	29.5	27.0	240	
12FJX-4MJ	7/16"-20	1.1/16"-12	27.7	32.0	240	
12FJX-8MJ	3/4"-16	1.1/16"-12	30.4	32.0	240	
12FJX-10MJ	7/8"-14	1.1/16"-12	32.8	32.0	240	
16FJX-6MJ	9/16"-18	1.5/16"-12	30.0	41.0	210	
16FJX-10MJ	7/8"-14	1.5/16"-12	34.6	41.0	210	
16FJX-12MJ	1.1/16"-12	1.5/16"-12	37.3	41.0	210	
24FJX-16MJ	1.5/16"-12	1.7/8"-12	42.0	60.0	140	



JIC FJX-MBSPPCOR

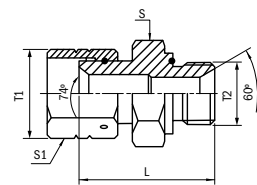
JIC 37° female swivel / male BSPP with O-Ring and retaining Ring



ADAPTOR	THREAD		LENGTH	HEX/FLATS		WORKING PRESSURE
	REF.	T2		T3	S	
JIC	JIC F	BSPP	mm	mm	mm	bar
4FJX-2MBSPPCOR	7/16"-20	1/8"-28	33.5	14.0	14.0	200
4FJX-4MBSPPCOR	7/16"-20	1/4"-19	39.0	19.0	17.0	200
5FJX-2MBSPPCOR	1/2"-20	1/8"-28	24.0	17.0	17.0	200
6FJX-4MBSPPCOR	9/16"-18	1/4"-19	42.0	19.0	19.0	200
6FJX-6MBSPPCOR	9/16"-18	3/8"-19	42.0	22.0	19.0	200
8FJX-6MBSPPCOR	3/4"-16	3/8"-19	43.5	22.0	24.0	200
8FJX-8MBSPPCOR	3/4"-16	1/2"-14	47.0	27.0	24.0	200
10FJX-6MBSPPCOR	7/8"-14	3/8"-19	47.0	24.0	27.0	200
10FJX-8MBSPPCOR	7/8"-14	1/2"-14	50.0	27.0	27.0	200
10FJX-12MBSPPCOR	7/8"-14	3/4"-14	38.0	36.0	27.0	200
12FJX-8MBSPPCOR	1.1/16"-12	1/2"-14	52.5	30.0	32.0	200
12FJX-12MBSPPCOR	1.1/16"-12	3/4"-14	55.5	36.0	32.0	200
16FJX-16MBSPPCOR	1.5/16"-12	1"-11	60.5	46.0	41.0	200
20FJX-20MBSPPCOR	1.5/8"-12	1.1/4"-11	67.0	50.0	50.0	160
24FJX-24MBSPPCOR	1.7/8"-12	1.1/2"-11	76.0	55.0	55.0	140

JIC FJX-MBSPPWD

JIC 37° male / male BSPP with captive seal



ADAPTOR	THREAD		LENGTH	HEX/FLATS		WORKING PRESSURE
	REF.	T1		T2	S	
JIC	JIC F	BSPP	mm	mm	mm	bar
6FJX-6MBSPPWD-W/N	9/16"-18	3/8"-19	33.5	22.0	19.0	315
6FJX-8MBSPPWD-W/N	9/16"-18	1/2"-14	36.5	27.0	19.0	250
8FJX-4MBSPPWD-W/N	3/4"-16	1/4"-19	32.0	19.0	22.0	310
8FJX-8MBSPPWD-W/N	3/4"-16	1/2"-14	37.5	27.0	22.0	250
16FJX-16MBSPPWD-W/N	1.5/16"-12	1"-11	48.5	41.0	41.0	210

INTRODUCTION

BSPP ADAPTORS

JIC ADAPTORS

ORFS ADAPTORS

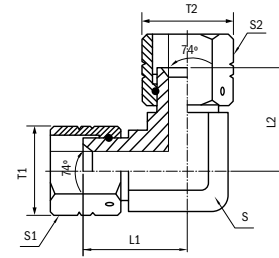
PRESSURE WASH ADAPTORS

QUICK-LOK ADAPTORS



JIC FJX-FJX90-W/N

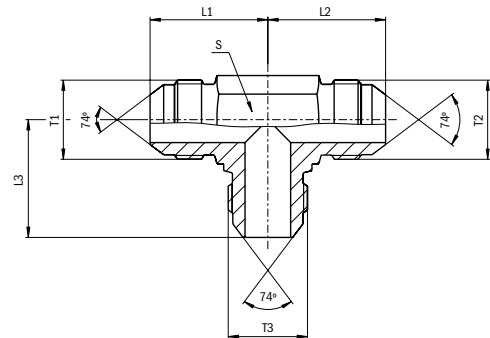
JIC 37° female swivel / female swivel 90° elbow with wire-on-nut



ADAPTOR	THREAD		LENGTH		HEX/FLATS		WORKING PRESSURE
	REF.	T1	T2	L1	L2	S	
JIC	JIC F	JIC F	mm	mm	mm	mm	bar
8FJX-8FJX90-W/N	3/4"-16	3/4"-16	24.3	24.3	19.0	22.0	310

JIC MJ-MJ-MJ

JIC 37° male / male / male "T"

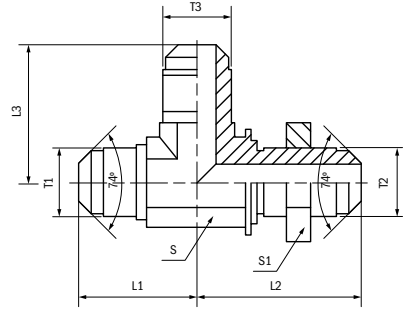


ADAPTOR	THREAD			LENGTH			HEX/FLATS	WORKING PRESSURE
	REF.	T1	T2	T3	L1	L2		
JIC	JIC	JIC	JIC	mm	mm	mm	mm	bar
4MJ-4MJ-4MJ	7/16"-20	7/16"-20	7/16"-20	22.6	22.6	22.6	11.0	350
5MJ-5MJ-5MJ	1/2"-20	1/2"-20	1/2"-20	24.1	24.1	24.1	14.0	350
6MJ-6MJ-6MJ	9/16"-18	9/16"-18	9/16"-18	26.9	26.9	26.9	14.0	350
8MJ-8MJ-8MJ	3/4"-16	3/4"-16	3/4"-16	31.8	31.8	31.8	19.0	310
10MJ-10MJ-10MJ	7/8"-14	7/8"-14	7/8"-14	36.8	36.8	36.8	22.0	240
12MJ-12MJ-12MJ	1.1/16"-12	1.1/16"-12	1.1/16"-12	42.2	42.2	42.2	27.0	240
16MJ-16MJ-16MJ	1.5/16"-12	1.5/16"-12	1.5/16"-12	46.0	46.0	46.0	33.0	210



JIC MJ-MJBKHD-MJ

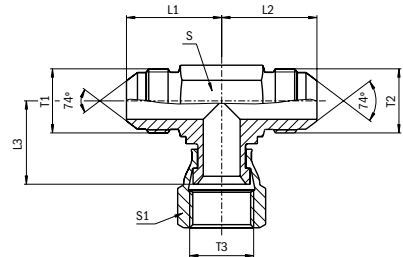
JIC 37° male / male bulkhead / male "run T"



ADAPTOR		THREAD			LENGTH			HEX/FLATS		WORKING PRESSURE
REF.	T1	T2	T3	L1	L2	L3	S	S1	WP	
JIC	JIC	JIC	JIC	mm	mm	mm	mm	mm	bar	
8MJ-8MJBKHD-8MJ	3/4"-16	3/4"-16	3/4"-16	34.5	53.6	34.5	19.0	24.0	310	

JIC MJ-MJ-FJX

JIC 37° male / male / female swivel "branch T"

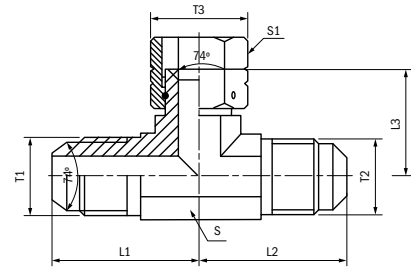


ADAPTOR		THREAD			LENGTH			HEX/FLATS		WORKING PRESSURE
REF.	T1	T2	T3	L1	L2	L3	S	S1	WP	
JIC	JIC	JIC	JIC F	mm	mm	mm	mm	mm	bar	
4MJ-4MJ-4FJX	7/16"-20	7/16"-20	7/16"-20	22.6	22.6	16.7	11.0	14.0	350	
5MJ-5MJ-5FJX	1/2"-20	1/2"-20	1/2"-20	24.1	24.1	17.4	14.0	17.0	350	
6MJ-6MJ-6FJX	9/16"-18	9/16"-18	9/16"-18	26.9	26.9	22.2	14.0	19.0	350	
8MJ-8MJ-8FJX	3/4"-16	3/4"-16	3/4"-16	31.8	31.8	24.3	19.0	22.0	310	
10MJ-10MJ-10FJX	7/8"-14	7/8"-14	7/8"-14	36.8	36.8	28.5	22.0	27.0	240	
12MJ-12MJ-12FJX	1.1/16"-12	1.1/16"-12	1.1/16"-12	42.2	42.2	30.2	27.0	32.0	240	
16MJ-16MJ-16FJX	1.5/16"-12	1.5/16"-12	1.5/16"-12	46.0	46.0	35.7	33.0	41.0	210	



JIC MJ-MJ-FJX-W/N

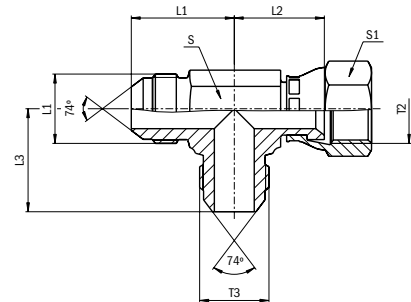
JIC 37° male / male / female swivel with wire-on-nut "branch T"



ADAPTOR	THREAD			LENGTH			HEX/FLATS		WORKING PRESSURE
REF.	T1	T2	T3	L1	L2	L3	S	S1	WP
JIC	JIC	JIC	JIC F	mm	mm	mm	mm	mm	bar
6MJ-6MJ-6FJX-W/N	1/16"-18	1/16"-18	1/16"-18	26.9	26.9	22.2	14.0	19.0	350
8MJ-8MJ-8FJX-W/N	3/4"-16	3/4"-16	3/4"-16	31.8	31.8	24.3	19.0	22.0	310
10MJ-6MJ-10FJX-W/N	7/8"-14	1/16"-18	7/8"-14	36.8	33.5	28.5	22.0	27.0	240
10MJ-10MJ-10FJX-W/N	7/8"-14	7/8"-14	7/8"-14	36.8	36.8	28.5	22.0	27.0	240

JIC MJ-FJX-MJ

JIC 37° male / female swivel / male "run T"

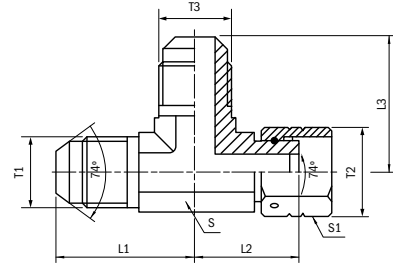


ADAPTOR	THREAD			LENGTH			HEX/FLATS		WORKING PRESSURE
REF.	T1	T2	T3	L1	L2	L3	S	S1	WP
JIC	JIC	JIC F	JIC	mm	mm	mm	mm	mm	bar
4MJ-4FJX-4MJ	7/16"-20	7/16"-20	7/16"-20	22.6	26.6	22.6	11.0	14.0	350
5MJ-5FJX-5MJ	1/2"-20	1/2"-20	1/2"-20	24.1	17.4	24.1	14.0	17.0	350
6MJ-6FJX-6MJ	1/16"-18	1/16"-18	1/16"-18	26.9	22.2	26.9	14.0	19.0	350
8MJ-8FJX-8MJ	3/4"-16	3/4"-16	3/4"-16	31.8	24.3	31.8	19.0	22.0	310
10MJ-10FJX-10MJ	7/8"-14	7/8"-14	7/8"-14	36.8	28.6	36.8	22.0	27.0	240
12MJ-12FJX-12MJ	1.1/16"-12	1.1/16"-12	1.1/16"-12	42.2	30.2	42.2	27.0	32.0	240
14MJ-14FJX-14MJ	1.3/16"-12	1.3/16"-12	1.3/16"-12	45.7	35.7	45.7	31.0	36.0	210
16MJ-16FJX-16MJ	1.5/16"-12	1.5/16"-12	1.5/16"-12	46.0	35.7	46.0	31.0	41.0	210
20MJ-20FJX-20MJ	1.5/8"-12	1.5/8"-12	1.5/8"-12	52.3	42.8	52.3	41.0	50.0	170



JIC MJ-FJX-MJ-W/N

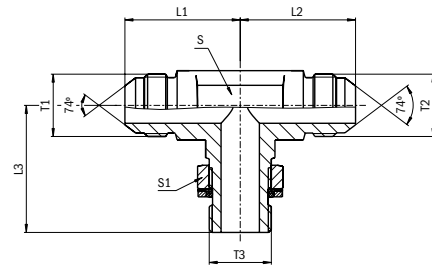
JIC 37° male / female swivel with wire-on nut / male "run T"



ADAPTOR		THREAD			LENGTH			HEX/FLATS		WORKING PRESSURE
REF.	T1	T2	T3	L1	L2	L3	S	S1	WP	
JIC	JIC	JIC F	JIC	mm	mm	mm	mm	mm	bar	
6MJ-6FJX-6MJ-W/N	7/16"-18	7/16"-18	7/16"-18	26.9	22.2	26.9	14.0	19.0	350	
8MJ-8FJX-8MJ-W/N	3/4"-16	3/4"-16	3/4"-16	31.8	24.3	31.8	19.0	22.0	310	
10MJ-10FJX-10MJ-W/N	7/8"-14	7/8"-14	7/8"-14	36.8	28.5	36.8	22.0	27.0	240	
16MJ-16FJX-16MJ-W/N	1.5/16"-12	1.5/16"-12	1.5/16"-12	46.0	35.7	46.0	33.0	41.0	210	

JIC MJ-MJ-MBSPACOR

JIC 37° male / male / adjustable male BSPP with O-Ring and retaining Ring "branch T"



THREAD			LENGTH			HEX/FLATS		WORKING PRESSURE	ADAPTOR
T1	T2	T3	L1	L2	L3	S	S1	WP	REF.
JIC	JIC	BSPP	mm	mm	mm	mm	mm	bar	JIC
7/16"-20	7/16"-20	1/8"-28	22.5	22.5	26.0	11.0	14.0	200	4MJ-4MJ-2MBSPACOR
9/16"-18	9/16"-18	1/4"-19	27.0	27.0	31.8	14.0	19.0	200	6MJ-6MJ-4MBSPACOR
3/4"-16	3/4"-16	3/8"-19	31.5	31.5	36.5	19.0	22.0	200	8MJ-8MJ-6MBSPACOR
3/4"-16	3/4"-16	1/2"-14	34.0	34.0	43.0	22.0	27.0	200	8MJ-8MJ-8MBSPACOR
7/8"-14	7/8"-14	1/2"-14	36.5	36.5	43.0	22.0	27.0	200	10MJ-10MJ-8MBSPACOR
1.1/16"-12	1.1/16"-12	3/4"-14	42.0	42.0	49.0	27.0	36.0	200	12MJ-12MJ-12MBSPACOR
1.5/16"-12	1.5/16"-12	1"-11	46.0	46.0	52.0	33.0	41.0	200	16MJ-16MJ-16MBSPACOR

INTRODUCTION

BSF ADAPTORS

JIC ADAPTORS

ORFS ADAPTORS

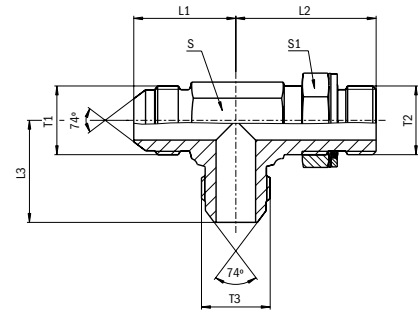
PRESSURE WASH ADAPTORS

QUICK-LOK ADAPTORS



JIC MJ-MBSPPACOR-MJ

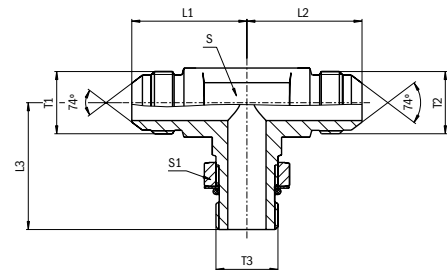
JIC 37° male / adjustable male BSPP with O-Ring and retaining Ring male "run T"



THREAD			LENGTH			HEX/FLATS		WORKING PRESSURE	ADAPTOR
T1	T2	T3	L1	L2	L3	S	S1	WP	REF.
JIC	BSPP	JIC	mm	mm	mm	mm	mm	bar	JIC
7/16"-20	1/8"-28	7/16"-20	22.5	26.0	22.5	11.0	14.0	200	4MJ-2MBSPPACOR-4MJ
9/16"-18	1/4"-19	9/16"-18	27.0	31.5	27.0	14.0	19.0	200	6MJ-4MBSPPACOR-6MJ
3/4"-16	3/8"-19	3/4"-16	31.5	36.5	31.5	19.0	22.0	200	8MJ-6MBSPPACOR-8MJ
7/8"-14	1/2"-14	7/8"-14	36.5	43.0	36.5	22.0	27.0	200	10MJ-8MBSPPACOR-10MJ
1.1/16"-12	3/4"-14	1.1/16"-12	42.0	49.0	42.0	27.0	36.0	200	12MJ-12MBSPPACOR-12MJ
1.5/16"-12	1"-11	1.5/16"-12	46.0	52.0	46.0	33.0	41.0	200	16MJ-16MBSPPACOR-16MJ

JIC MJ-MJ-MBA

JIC 37° male / male / adjustable male SAE 'o' Ring boss "branch T"

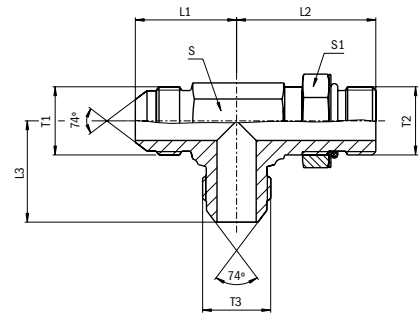


ADAPTOR	THREAD			LENGTH			HEX/FLATS		WORKING PRESSURE
REF.	T1	T2	T3	L1	L2	L3	S	S1	WP
JIC	JIC	JIC	SAE O	mm	mm	mm	mm	mm	bar
4MJ-4MJ-4MBA	7/16"-20	7/16"-20	7/16"-20 UNF	22.6	22.6	26.2	11.0	14.0	315
4MJ-4MJ-6MBA	7/16"-20	7/16"-20	9/16"-18 UNF	26.7	26.7	31.8	14.0	19.0	315
5MJ-5MJ-5MBA	1/2"-20	1/2"-20	1/2"-20 UNF	24.1	24.1	28.7	14.0	17.0	315
6MJ-6MJ-6MBA	9/16"-18	9/16"-18	9/16"-18 UNF	26.9	26.9	31.8	14.0	19.0	315
8MJ-8MJ-8MBA	3/4"-16	3/4"-16	3/4"-16 UNF	31.8	31.8	36.8	19.0	22.0	310
8MJ-8MJ-10MBA	3/4"-16	3/4"-16	7/8"-14 UNF	33.8	33.8	43.2	22.0	27.0	250
10MJ-10MJ-10MBA	7/8"-14	7/8"-14	7/8"-14 UNF	36.8	36.8	43.1	22.0	27.0	240
12MJ-12MJ-12MBA	1.1/16"-12	1.1/16"-12	1.1/16"-12 UN	42.2	42.2	49.3	27.0	32.0	240
16MJ-16MJ-16MBA	1.5/16"-12	1.5/16"-12	1.5/16"-12 UN	46.0	46.0	52.1	33.0	41.0	200



JIC MJ-MBA-MJ

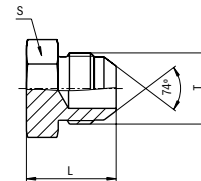
JIC 37° male / adjustable male SAE 'O'
Ring boss / male "run T"



ADAPTOR		THREAD			LENGTH			HEX/FLATS		WORKING PRESSURE
REF.	T1	T2	T3	L1	L2	L3	S	S1	WP	
JIC	JIC	SAE O	JIC	mm	mm	mm	mm	mm	bar	
4MJ-4MBA-4MJ	7/16"-20	7/16"-20 UNF	7/16"-20	22.6	26.2	22.6	11.0	14.0	315	
5MJ-5MBA-5MJ	1/2"-20	1/2"-20 UNF	1/2"-20	24.1	28.7	24.1	14.0	17.0	315	
6MJ-6MBA-6MJ	9/16"-18	9/16"-18 UNF	9/16"-18	26.9	31.8	26.9	14.0	19.0	315	
8MJ-8MBA-8MJ	3/4"-16	3/4"-16 UNF	3/4"-16	31.8	36.8	31.8	19.0	22.0	310	
10MJ-10MBA-10MJ	7/8"-14	7/8"-14 UNF	7/8"-14	36.8	43.2	36.8	22.0	27.0	240	
12MJ-12MBA-8MJ	1.1/16"-12	1.1/16"-12 UN	1.1/16"-12	42.2	49.3	36.8	27.0	32.0	240	
12MJ-12MBA-12MJ	1.1/16"-12	1.1/16"-12 UN	1.1/16"-12	42.2	49.3	42.2	27.0	32.0	240	
16MJ-16MBA-16MJ	1.5/16"-12	1.5/16"-12 UN	1.5/16"-12	46.0	52.1	46.0	33.0	41.0	200	

JIC MJ-PLUG

JIC 37° male plug



ADAPTOR	THREAD	LENGTH	HEX/FLATS	WORKING PRESSURE
REF.	T1	L	S	WP
JIC	JIC	mm	mm	bar
4MJ-PLUG	7/16"-20	20.3	12.0	350
5MJ-PLUG	1/2"-20	20.3	14.0	350
6MJ-PLUG	9/16"-18	21.3	17.0	350
8MJ-PLUG	3/4"-16	23.9	19.0	310
10MJ-PLUG	7/8"-14	27.9	24.0	240
12MJ-PLUG	1.1/16"-12	32.5	27.0	240
16MJ-PLUG	1.5/16"-12	33.8	36.0	210

INTRODUCTION

BSP ADAPTORS

JIC ADAPTORS

ORFS ADAPTORS

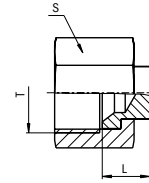
PRESSURE WASH ADAPTORS

QUICK-LOK ADAPTORS



JIC FJ-CAP

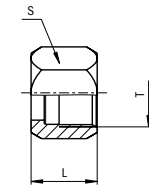
JIC 37° female swivel cap



ADAPTOR	THREAD	LENGTH	HEX/FLATS	WORKING PRESSURE
REF.	T1	L	S	WP
JIC	JIC F	mm	mm	bar
4FJ-CAP	7/16"-20	8.7	14.0	350
5FJ-CAP	1/2"-20	10.3	17.0	350
6FJ-CAP	9/16"-18	11.9	19.0	350
8FJ-CAP	3/4"-16	13.5	22.0	310
10FJ-CAP	7/8"-14	13.5	27.0	240
12FJ-CAP	1.1/16"-12	16.7	32.0	240
16FJ-CAP	1.5/16"-12	15.9	41.0	210

JIC FJ-NUT

JIC 37° female nut

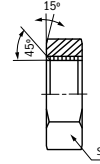
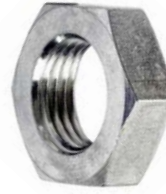


ADAPTOR	THREAD	LENGTH	HEX/FLATS	WORKING PRESSURE
REF.	T	L	S	WP
JIC	JIC F	mm	mm	bar
4FJ-NUT	7/16"-20	15.8	14.0	350
5FJ-NUT	1/2"-20	17.3	17.0	350
6FJ-NUT	9/16"-18	18.5	19.0	350
8FJ-NUT	3/4"-16	21.6	22.0	310
10FJ-NUT	7/8"-14	24.9	27.0	240
12FJ-NUT	1.1/16"-12	26.2	32.0	240
16FJ-NUT	1.5/16"-12	28.7	41.0	210
20FJ-NUT	1.5/8"-12	31.2	50.0	170
24FJ-NUT	1.7/8"-12	36.1	60.0	140



JIC-LOCKNUT

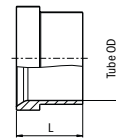
JIC locknut for bulkhead adaptor



ADAPTOR	THREAD	HEX/FLATS
REF.	T1	S
JIC	JIC	mm
6JIC-LOCKNUT	3/16"-18	22.0

JIC TS METRIC

JIC 37° tube end sleeve for metric tubes

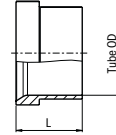


ADAPTOR	THREAD	LENGTH	WORKING PRESSURE
REF.	TUBE OD	L	WP
JIC	Metric	mm	bar
SLEEVE JIC 6TS METRIC	6	10.4	350
SLEEVE JIC 8TS METRIC	8	11.2	350
SLEEVE JIC 10TS METRIC	10	12.7	350
SLEEVE JIC 12TS METRIC	12	14.2	310
SLEEVE JIC 16TS METRIC	16	16.8	240
SLEEVE JIC 20TS METRIC	20	17.3	240
SLEEVE JIC 25TS METRIC	25	19.8	240
SLEEVE JIC 30TS METRIC	30	23.1	170
SLEEVE JIC 38TS METRIC	38	28.4	140



JIC TS IMPERIAL

JIC 37° tube end sleeve for imperial tubes



ADAPTOR	THREAD	LENGTH	WORKING PRESSURE
REF.	TUBE OD	L	WP
JIC	Metric	mm	bar
SLEEVE JIC TS04 IMPERIAL	4	10.4	350
SLEEVE JIC TS05 IMPERIAL	5	11.2	350
SLEEVE JIC TS06 IMPERIAL	6	12.7	350
SLEEVE JIC TS08 IMPERIAL	8	14.2	310
SLEEVE JIC TS10 IMPERIAL	10	16.8	240
SLEEVE JIC TS12 IMPERIAL	12	17.3	240
SLEEVE JIC TS16 IMPERIAL	16	27.4	210





DRIVEN BY POSSIBILITY™

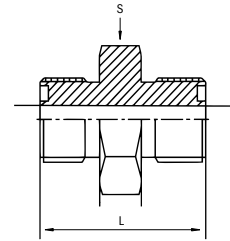
ORFS ADAPTORS





ORFS MFFOR-MFFOR

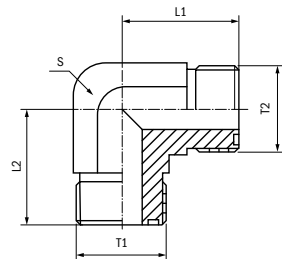
SAE flat face O-Ring male / male



ADAPTOR	THREAD		LENGTH		HEX/FLATS	WORKING PRESSURE
	REF.	T1	T2	L	S	WP
ORFS	ORFS	ORFS	mm		mm	bar
4MFFOR-4MFFOR	1/16"-18	1/16"-18	27.4		17.0	630
6MFFOR-4MFFOR	1 1/16"-16	1/16"-18	29.7		19.0	630
6MFFOR-6MFFOR	1 1/16"-16	1 1/16"-16	31.0		19.0	630
8MFFOR-6MFFOR	1 3/16"-16	1 1/16"-16	33.8		22.0	630
8MFFOR-8MFFOR	1 3/16"-16	1 3/16"-16	35.5		22.0	630
10MFFOR-8MFFOR	1"-14	1 3/16"-16	39.9		27.0	400
10MFFOR-10MFFOR	1"-14	1"-14	42.5		27.0	400
12MFFOR-8MFFOR	1 3/16"-12	1 3/16"-16	43.0		32.0	400
12MFFOR-10MFFOR	1 3/16"-12	1"-14	45.7		32.0	400
12MFFOR-12MFFOR	1 3/16"-12	1 3/16"-12	47.2		32.0	400
16MFFOR-12MFFOR	1 7/16"-12	1 3/16"-12	48.8		41.0	400
16MFFOR-16MFFOR	1 7/16"-12	1 7/16"-12	49.3		41.0	400
20MFFOR-16MFFOR	1 1 1/16"-12	1 7/16"-12	51.3		46.0	250
20MFFOR-20MFFOR	1 1 1/16"-12	1 1 1/16"-12	51.3		46.0	250
24MFFOR-24MFFOR	2"-12	2"-12	53.0		55.0	250

ORFS MFFOR-MFFOR90

SAE flat face O-Ring male / male 90° elbow



ADAPTOR	THREAD		LENGTH		HEX/FLATS	WORKING PRESSURE
	REF.	T1	T2	L1	L2	S
ORFS	ORFS	ORFS	mm	mm	mm	bar
4MFFOR-4MFFOR90	1/16"-18	1/16"-18	21.6	21.6	14.0	630
6MFFOR-6MFFOR90	1 1/16"-16	1 1/16"-16	24.9	24.9	19.0	630
8MFFOR-8MFFOR90	1 3/16"-16	1 3/16"-16	28.0	28.0	19.0	630
10MFFOR-10MFFOR90	1"-14	1"-14	33.3	33.3	27.0	400
12MFFOR-12MFFOR90	1 3/16"-12	1 3/16"-16	37.5	37.5	30.0	400
16MFFOR-16MFFOR90	1 7/16"-12	1 7/16"-12	41.7	41.7	36.0	400
20MFFOR-20MFFOR90	1 1 1/16"-12	1 1 1/16"-12	44.7	44.7	41.0	250
24MFFOR-24MFFOR90	2"-12	2"-12	48.8	48.8	50.0	250

INTRODUCTION

BSP ADAPTORS

JIC ADAPTORS

ORFS ADAPTORS

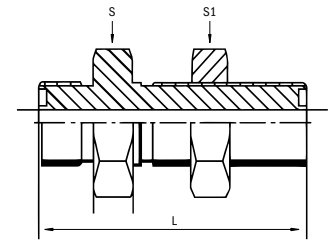
PRESSURE WASH ADAPTORS

QUICK-LOK ADAPTORS



ORFS MFFOR-MFFORBKHD

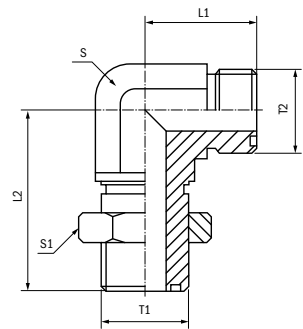
SAE flat face O-Ring male / male straight bulkhead



ADAPTOR		THREAD		LENGTH		HEX/FLATS		WORKING PRESSURE
REF.	T1	T2	L	S & S1	WP			
ORFS	ORFS	ORFS	mm	mm	bar			
4MFFOR-4MFFORBKHD	1/16"-18	1/16"-18	48.3	22.0	630			
6MFFOR-6MFFORBKHD	1/8"-16	1/8"-16	53.1	27.0	630			
8MFFOR-8MFFORBKHD	3/16"-16	3/16"-16	58.4	30.0	630			
10MFFOR-10MFFORBKHD	1"-14	1"-14	66.6	36.0	400			
12MFFOR-12MFFORBKHD	1.3/16"-12	1.3/16"-12	69.1	41.0	400			
16MFFOR-16MFFORBKHD	1.7/16"-12	1.7/16"-12	70.1	46.0	400			
20MFFOR-20MFFORBKHD	1.11/16"-12	1.11/16"-12	70.1	50.0	250			
24MFFOR-24MFFORBKHD	2"-12	2"-12	70.1	60.0	250			

ORFS MFFOR-MFFORBKHD90

SAE flat face O-Ring male / male bulkhead 90° union elbow with lock nut

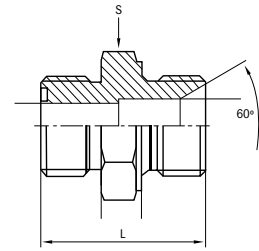


ADAPTOR		THREAD		LENGTH		HEX/FLATS		WORKING PRESSURE
REF.	T1	T2	L1	L2	S	S1	WP	
ORFS	ORFS	ORFS	mm	mm	mm	mm	bar	
4MFFOR-4MFFORBKHD90	1/16"-18	1/16"-18	22.6	47.0	14.0	22.0	630	
6MFFOR-6MFFORBKHD90	1/8"-16	1/8"-16	26.0	52.0	19.0	27.0	630	
8MFFOR-8MFFORBKHD90	3/16"-16	3/16"-16	29.0	55.4	19.0	30.0	630	
10MFFOR-10MFFORBKHD90	1"-14	1"-14	34.5	63.0	27.0	36.0	400	
12MFFOR-12MFFORBKHD90	1.3/16"-12	1.3/16"-12	38.5	67.2	30.0	41.0	400	
16MFFOR-16MFFORBKHD90	1.7/16"-12	1.7/16"-12	42.4	71.1	36.0	46.0	400	
20MFFOR-20MFFORBKHD90	1.11/16"-12	1.11/16"-12	45.5	75.4	41.0	50.0	250	
24MFFOR-24MFFORBKHD90	2"-12	2"-12	49.5	79.5	48.0	60.0	250	



ORFS MFFOR-MBSPP

SAE flat face O-Ring male / male BSPP 60°

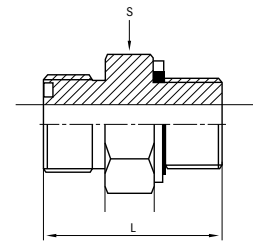


ADAPTOR	THREAD		LENGTH	HEX/FLATS	WORKING PRESSURE
REF.	T1	T2	L	S	WP
ORFS	ORFS	BSPP	mm	mm	bar
4MFFOR-2MBSPP	9/16"-18	1/8"-28	24.5	17.0	350
4MFFOR-4MBSPP	9/16"-18	1/4"-19	29.0	19.0	350
4MFFOR-6MBSPP	9/16"-18	3/8"-19	29.5	22.0	350
4MFFOR-8MBSPP	9/16"-18	1/2"-14	31.8	27.0	315
6MFFOR-2MBSPP	1 1/16"-16	1/8"-28	28.0	19.0	350
6MFFOR-4MBSPP	1 1/16"-16	1/4"-19	30.0	19.0	350
6MFFOR-6MBSPP	1 1/16"-16	3/8"-19	32.0	22.0	350
6MFFOR-8MBSPP	1 1/16"-16	1/2"-14	35.0	27.0	315
6MFFOR-12MBSPP	1 1/16"-16	3/4"-14	39.0	32.0	250
8MFFOR-4MBSPP	1 3/16"-16	1/4"-19	32.5	22.0	350
8MFFOR-6MBSPP	1 3/16"-16	3/8"-19	32.5	22.0	350
8MFFOR-8MBSPP	1 3/16"-16	1/2"-14	36.5	27.0	315
8MFFOR-12MBSPP	1 3/16"-16	3/4"-14	40.5	32.0	250
10MFFOR-6MBSPP	1"-14	3/8"-19	36.0	27.0	350
10MFFOR-8MBSPP	1"-14	1/2"-14	37.8	27.0	315
10MFFOR-10MBSPP	1"-14	5/8"-14	43.5	30.0	315
10MFFOR-12MBSPP	1"-14	3/4"-14	41.0	32.0	250
10MFFOR-16MBSPP	1"-14	1"-11	49.0	41.0	200
12MFFOR-8MBSPP	1 3/16"-12	1/2"-14	44.0	32.0	315
12MFFOR-10MBSPP	1 3/16"-12	5/8"-14	45.0	32.0	315
12MFFOR-12MBSPP	1 3/16"-12	3/4"-14	45.0	32.0	250
12MFFOR-16MBSPP	1 3/16"-12	1"-11	47.0	41.0	200
12MFFOR-20MBSPP	1 3/16"-12	1 1/4"-11	54.0	50.0	160
16MFFOR-12MBSPP	1 7/16"-12	3/4"-14	44.5	41.0	250
16MFFOR-16MBSPP	1 7/16"-12	1"-11	50.0	41.0	200
16MFFOR-20MBSPP	1 7/16"-12	1 1/4"-11	54.0	50.0	160
16MFFOR-24MBSPP	1 7/16"-12	1 1/2"-11	54.5	55.0	125
20MFFOR-16MBSPP	1 11/16"-12	1"-11	50.0	46.0	200
20MFFOR-20MBSPP	1 11/16"-12	1 1/4"-11	52.0	50.0	160
20MFFOR-24MBSPP	1 11/16"-12	1 1/2"-11	54.5	55.0	125
24MFFOR-24MBSPP	2"-12	1 1/2"-11	54.5	55.0	125



ORFS MFFOR-MBSPPCOR

SAE flat face O-Ring male / male BSPP with O-Ring and retaining Ring

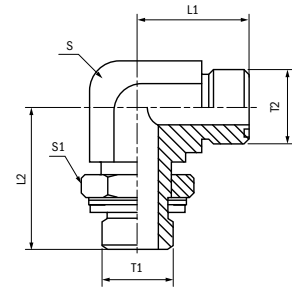


ADAPTOR	THREAD		LENGTH	HEX/FLATS	WORKING PRESSURE
REF.	T1	T2	L	S	WP
ORFS	ORFS	BSPP	mm	mm	bar
4MFFOR-2MBSPPCOR	3/16"-18	1/8"-28	25.0	17.0	200
4MFFOR-4MBSPPCOR	3/16"-18	1/4"-19	30.0	19.0	200
4MFFOR-6MBSPPCOR	3/16"-18	3/8"-19	31.0	22.0	200
4MFFOR-8MBSPPCOR	3/16"-18	1/2"-14	34.5	30.0	200
6MFFOR-2MBSPPCOR	1 1/16"-16	1/8"-28	28.5	19.0	630
6MFFOR-4MBSPPCOR	1 1/16"-16	1/4"-19	31.5	19.0	200
6MFFOR-6MBSPPCOR	1 1/16"-16	3/8"-19	32.5	22.0	200
6MFFOR-8MBSPPCOR	1 1/16"-16	1/2"-14	36.0	30.0	200
6MFFOR-12MBSPPCOR	1 1/16"-16	3/4"-14	36.5	36.0	400
8MFFOR-4MBSPPCOR	1 3/16"-16	1/4"-19	33.5	22.0	200
8MFFOR-6MBSPPCOR	1 3/16"-16	3/8"-19	33.5	22.0	200
8MFFOR-8MBSPPCOR	1 3/16"-16	1/2"-14	37.0	30.0	200
8MFFOR-12MBSPPCOR	1 3/16"-16	3/4"-14	38.0	36.0	200
10MFFOR-6MBSPPCOR	1"-14	3/8"-19	37.0	27.0	200
10MFFOR-8MBSPPCOR	1"-14	1/2"-14	39.5	30.0	200
10MFFOR-10MBSPPCOR	1"-14	5/8"-14	41.5	32.0	200
10MFFOR-12MBSPPCOR	1"-14	3/4"-14	43.5	36.0	200
10MFFOR-16MBSPPCOR	1"-14	1"-11	46.0	41.0	400
12MFFOR-8MBSPPCOR	1 3/16"-12	1/2"-14	44.0	32.0	200
12MFFOR-12MBSPPCOR	1 3/16"-12	3/4"-14	45.0	36.0	200
12MFFOR-16MBSPPCOR	1 3/16"-12	1"-11	47.5	41.0	200
12MFFOR-20MBSPPCOR	1 3/16"-12	1 1/4"-11	51.0	50.0	250
16MFFOR-12MBSPPCOR	1 7/16"-12	3/4"-14	43.0	36.0	200
16MFFOR-16MBSPPCOR	1 7/16"-12	1"-11	48.0	46.0	200
16MFFOR-20MBSPPCOR	1 7/16"-12	1 1/4"-11	51.5	50.0	160
16MFFOR-24MBSPPCOR	1 7/16"-12	1 1/2"-11	50.0	55.0	250
20MFFOR-16MBSPPCOR	1 11/16"-12	1"-11	51.5	50.0	200
20MFFOR-20MBSPPCOR	1 11/16"-12	1 1/4"-11	51.5	50.0	160
20MFFOR-24MBSPPCOR	1 11/16"-12	1 1/2"-11	50.0	55.0	250
24MFFOR-24MBSPPCOR	2"-12	1 1/2"-11	50.0	55.0	160



ORFS MFFOR-MBSPPACOR90

SAE flat face O-Ring male / male BSPP 90° elbow with O-Ring and retaining Ring



ADAPTOR	THREAD		LENGTH		HEX/FLATS		WORKING PRESSURE	
	REF.	T1	T2	L1	L2	S		S1
ORFS	ORFS	BSPP	mm	mm	mm	mm	bar	
4MFFOR-2MBSPPACOR90	3/16"-18	1/8"-28	21.5	30.0	14.0	14.0	200	
4MFFOR-4MBSPPACOR90	3/16"-18	1/4"-19	23.5	35.0	14.0	19.0	200	
4MFFOR-6MBSPPACOR90	3/16"-18	3/8"-19	25.0	38.0	19.0	22.0	200	
6MFFOR-4MBSPPACOR90	1/16"-16	1/4"-19	25.0	36.0	19.0	19.0	200	
6MFFOR-6MBSPPACOR90	1/16"-16	3/8"-19	26.5	38.0	19.0	22.0	200	
6MFFOR-8MBSPPACOR90	1/16"-16	1/2"-14	29.5	48.0	22.0	27.0	200	
8MFFOR-4MBSPPACOR90	3/16"-16	1/4"-19	28.0	35.0	19.0	19.0	200	
8MFFOR-6MBSPPACOR90	3/16"-16	3/8"-19	28.0	36.5	19.0	22.0	200	
8MFFOR-8MBSPPACOR90	3/16"-16	1/2"-14	31.0	48.0	27.0	27.0	200	
8MFFOR-12MBSPPACOR90	3/16"-16	3/4"-14	30.7	49.0	27.0	36.0	200	
10MFFOR-6MBSPPACOR90	1"-14	3/8"-19	35.5	43.0	27.0	22.0	200	
10MFFOR-8MBSPPACOR90	1"-14	1/2"-14	33.5	48.0	27.0	27.0	200	
10MFFOR-12MBSPPACOR90	1"-14	3/4"-14	36.0	51.5	30.0	36.0	200	
10MFFOR-16MBSPPACOR90	1"-14	1"-11	41.2	58.0	36.0	41.0	200	
12MFFOR-8MBSPPACOR90	1.3/16"-12	1/2"-14	37.5	49.0	30.0	27.0	200	
12MFFOR-12MBSPPACOR90	1.3/16"-12	3/4"-14	37.5	51.5	30.0	36.0	200	
12MFFOR-16MBSPPACOR90	1.3/16"-12	1"-11	41.5	58.0	36.0	41.0	200	
16MFFOR-12MBSPPACOR90	1.7/16"-12	3/4"-14	42.0	57.5	36.0	36.0	200	
16MFFOR-16MBSPPACOR90	1.7/16"-12	1"-11	42.0	58.0	36.0	41.0	200	
16MFFOR-20MBSPPACOR90	1.7/16"-12	1.1/4"-11	44.5	60.5	41.0	50.0	160	
20MFFOR-16MBSPPACOR90	1.11/16"-12	1"-11	44.7	60.5	41.0	41.0	200	
20MFFOR-20MBSPPACOR90	1.11/16"-12	1.1/4"-11	44.7	60.5	41.0	50.0	160	
20MFFOR-24MBSPPACOR90	1.11/16"-12	1.1/2"-11	49.0	64.5	48.0	55.0	160	
24MFFOR-24MBSPPACOR90	2"-12	1.1/2"-11	49.0	64.5	48.0	55.0	160	

INTRODUCTION

BSPP ADAPTORS

JIC ADAPTORS

ORFS ADAPTORS

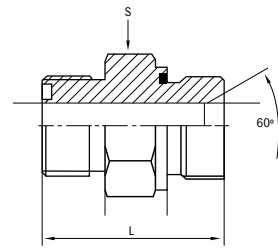
PRESSURE WASH ADAPTORS

QUICK-LOK ADAPTORS



ORFS MFFOR-MBSPPWD

SAE flat face O-Ring male / male BSPP with captive seal

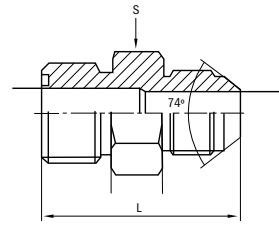


ADAPTOR		THREAD		LENGTH	HEX/FLATS	WORKING PRESSURE
REF.	T1	T2	L	S	WP	
ORFS	ORFS	BSPP	mm	mm	bar	
4MFFOR-2MBSPPWD	3/16"-18	1/8"-28	26.0	17.0	630	
4MFFOR-4MBSPPWD	3/16"-18	1/4"-19	31.0	19.0	630	
4MFFOR-6MBSPPWD	3/16"-18	3/8"-19	31.8	22.0	630	
4MFFOR-8MBSPPWD	3/16"-18	1/2"-14	38.0	27.0	400	
6MFFOR-2MBSPPWD	11/16"-16	1/8"-28	28.0	19.0	630	
6MFFOR-4MBSPPWD	11/16"-16	1/4"-19	32.5	19.0	630	
6MFFOR-6MBSPPWD	11/16"-16	3/8"-19	33.5	22.0	630	
6MFFOR-8MBSPPWD	11/16"-16	1/2"-14	38.5	27.0	400	
6MFFOR-12MBSPPWD	11/16"-16	3/4"-14	40.5	32.0	400	
8MFFOR-4MBSPPWD	13/16"-16	1/4"-19	34.5	22.0	630	
8MFFOR-6MBSPPWD	13/16"-16	3/8"-19	35.3	22.0	630	
8MFFOR-8MBSPPWD	13/16"-16	1/2"-14	39.0	27.0	400	
8MFFOR-12MBSPPWD	13/16"-16	3/4"-14	41.8	32.0	400	
10MFFOR-6MBSPPWD	1"-14	3/8"-19	38.5	27.0	400	
10MFFOR-8MBSPPWD	1"-14	1/2"-14	41.0	27.0	400	
10MFFOR-10MBSPPWD	1"-14	5/8"-14	41.5	30.0	400	
10MFFOR-12MBSPPWD	1"-14	3/4"-14	45.0	32.0	400	
10MFFOR-16MBSPPWD	1"-14	1"-11	47.5	41.0	400	
12MFFOR-8MBSPPWD	1.3/16"-12	1/2"-14	44.5	32.0	400	
12MFFOR-12MBSPPWD	1.3/16"-12	3/4"-14	46.5	32.0	400	
12MFFOR-16MBSPPWD	1.3/16"-12	1"-11	49.0	41.0	400	
12MFFOR-20MBSPPWD	1.3/16"-12	1.1/4"-11	53.5	50.0	250	
16MFFOR-12MBSPPWD	1.7/16"-12	3/4"-14	47.5	41.0	400	
16MFFOR-16MBSPPWD	1.7/16"-12	1"-11	50.0	41.0	400	
16MFFOR-20MBSPPWD	1.7/16"-12	1.1/4"-11	53.5	50.0	250	
16MFFOR-24MBSPPWD	1.7/16"-12	1.1/2"-11	58.0	55.0	250	
20MFFOR-16MBSPPWD	1.11/16"-12	1"-11	52.0	46.0	250	
20MFFOR-20MBSPPWD	1.11/16"-12	1.1/4"-11	55.5	50.0	250	
20MFFOR-24MBSPPWD	1.11/16"-12	1.1/2"-11	57.6	55.0	250	
24MFFOR-24MBSPPWD	2"-12	1.1/2"-11	57.6	55.0	250	



ORFS MFFOR-MJ

SAE flat face O-Ring male / male JIC 37°



ADAPTOR		THREAD		LENGTH	HEX/FLATS	WORKING PRESSURE
REF.	T1	T2	L	S	WP	
ORFS	ORFS	JIC	mm	mm	bar	
4MFFOR-4MJ	9/16"-18	7/16"-20	31.7	17.0	350	
6MFFOR-6MJ	1 1/16"-16	9/16"-18	34.0	19.0	350	
8MFFOR-8MJ	1 3/16"-16	3/4"-16	39.4	22.0	310	
10MFFOR-10MJ	1"-14	7/8"-14	46.5	27.0	240	
12MFFOR-12MJ	1.3/16"-12	1.1/16"-12	52.1	32.0	240	
16MFFOR-16MJ	1.7/16"-12	1.5/16"-12	54.9	41.0	210	
20MFFOR-20MJ	1.11/16"-12	1.5/8"-12	58.2	46.0	170	
24MFFOR-24MJ	2"-12	1.7/8"-12	63.0	55.0	140	

INTRODUCTION

BSP ADAPTORS

JIC ADAPTORS

ORFS ADAPTORS

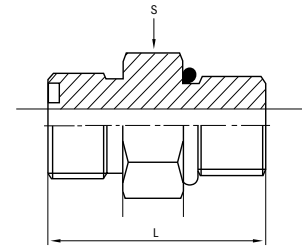
PRESSURE WASH ADAPTORS

QUICK-LOK ADAPTORS



ORFS MFFOR-MB

SAE flat face O-Ring male /
male SAE 'O' Ring boss

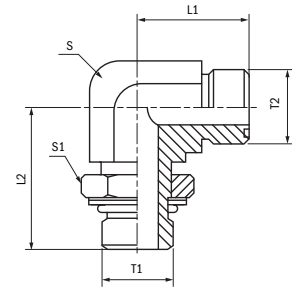


ADAPTOR	THREAD		LENGTH	HEX/FLATS	WORKING PRESSURE
REF.	T1	T2	L	S	WP
ORFS	ORFS	SAE O	mm	mm	bar
4MFFOR-4MB	9/16"-18	7/16"-20 UNF	28.8	17.0	630
4MFFOR-5MB	9/16"-18	1/2"-20 UNF	29.0	17.0	630
4MFFOR-6MB	9/16"-18	9/16"-18 UNF	30.5	19.0	630
4MFFOR-8MB	9/16"-18	3/4"-16 UNF	33.5	22.0	630
6MFFOR-4MB	1 1/16"-16	7/16"-20 UNF	34.1	19.0	630
6MFFOR-5MB	1 1/16"-16	1/2"-20 UNF	30.8	19.0	630
6MFFOR-6MB	1 1/16"-16	9/16"-18 UNF	32.0	19.0	630
6MFFOR-8MB	1 1/16"-16	3/4"-16 UNF	35.1	22.0	630
6MFFOR-10MB	1 1/16"-16	7/8"-14 UNF	38.8	27.0	630
6MFFOR-12MB	1 1/16"-16	1 1/16"-12 UN	42.8	32.0	400
8MFFOR-6MB	1 3/16"-16	9/16"-18 UNF	37.4	22.0	400
8MFFOR-8MB	1 3/16"-16	3/4"-16 UNF	36.6	22.0	400
8MFFOR-10MB	1 3/16"-16	7/8"-14 UNF	40.5	27.0	400
8MFFOR-12MB	1 3/16"-16	1 1/16"-12 UN	45.4	32.0	400
8MFFOR-16MB	1 3/16"-16	1 5/16"-12 UN	45.6	41.0	400
10MFFOR-8MB	1"-14	3/4"-16 UNF	45.2	27.0	400
10MFFOR-10MB	1"-14	7/8"-14 UNF	43.0	27.0	400
10MFFOR-12MB	1"-14	1 1/16"-12 UN	47.2	32.0	400
12MFFOR-8MB	1 3/16"-12	3/4"-16 UNF	48.5	32.0	400
12MFFOR-10MB	1 3/16"-12	7/8"-14 UNF	50.6	32.0	400
12MFFOR-12MB	1 3/16"-12	1 1/16"-12 UN	48.6	32.0	400
12MFFOR-16MB	1 3/16"-12	1 5/16"-12 UN	49.5	41.0	400
16MFFOR-12MB	1 7/16"-12	1 1/16"-12 UN	54.4	41.0	400
16MFFOR-16MB	1 7/16"-12	1 5/16"-12 UN	50.3	41.0	400
16MFFOR-20MB	1 7/16"-12	1 5/8"-12 UN	52.5	50.0	250
20MFFOR-16MB	1 11/16"-12	1 5/16"-12 UN	57.9	46.0	250
20MFFOR-20MB	1 11/16"-12	1 5/8"-12 UN	52.5	50.0	250
20MFFOR-24MB	1 11/16"-12	1 7/8"-12 UN	54.0	55.0	250
24MFFOR-20MB	2"-12	1 5/8"-12 UN	59.6	55.0	250
24MFFOR-24MB	2"-12	1 7/8"-12 UN	54.1	55.0	250
24MFFOR-32MB	2"-12	2 1/2"-12 UN	54.2	70.0	125



ORFS MFFOR-MBA90

SAE flat face O-Ring male / male SAE 'O' Ring boss 90° elbow



ADAPTOR	THREAD		LENGTH		HEX/FLATS		WORKING PRESSURE	
	REF.	T1	T2	L1	L2	S	S1	WP
ORFS	ORFS	SAE O	mm	mm	mm	mm	bar	
4MFFOR-4MBA90	1/16"-18	7/16"-20 UNF	21.5	32.7	14.0	17.0	630	
4MFFOR-6MBA90	1/16"-18	1/4"-18 UNF	23.4	36.8	19.0	19.0	630	
4MFFOR-8MBA90	1/16"-18	3/4"-16 UNF	24.6	40.6	19.0	24.0	630	
6MFFOR-4MBA90	1 1/16"-16	7/16"-20 UNF	25.0	35.0	19.0	17.0	630	
6MFFOR-6MBA90	1 1/16"-16	1/4"-18 UNF	24.9	36.8	19.0	19.0	630	
6MFFOR-8MBA90	1 1/16"-16	3/4"-16 UNF	26.5	40.6	19.0	24.0	630	
6MFFOR-10MBA90	1 1/16"-16	7/8"-14 UNF	30.0	50.0	27.0	27.0	630	
6MFFOR-12MBA90	1 1/16"-16	1 1/16"-12 UN	31.8	55.1	30.0	36.0	400	
8MFFOR-6MBA90	1 3/16"-16	1/4"-18 UNF	28.0	36.6	19.0	19.0	630	
8MFFOR-8MBA90	1 3/16"-16	3/4"-16 UNF	28.0	40.6	19.0	24.0	630	
8MFFOR-10MBA90	1 3/16"-16	7/8"-14 UNF	31.5	50.0	27.0	27.0	630	
8MFFOR-12MBA90	1 3/16"-16	1 1/16"-12 UN	34.0	55.0	30.0	36.0	400	
10MFFOR-8MBA90	1"-14	3/4"-16 UNF	33.5	46.0	27.0	24.0	400	
10MFFOR-10MBA90	1"-14	7/8"-14 UNF	33.3	50.0	27.0	27.0	400	
10MFFOR-12MBA90	1"-14	1 1/16"-12 UN	35.8	55.1	30.0	36.0	400	
12MFFOR-8MBA90	1 3/16"-12	3/4"-16 UNF	37.5	46.5	30.0	24.0	400	
12MFFOR-10MBA90	1 3/16"-12	7/8"-14 UNF	37.5	50.9	30.0	27.0	400	
12MFFOR-12MBA90	1 3/16"-12	1 1/16"-12 UN	37.5	55.0	30.0	36.0	400	
12MFFOR-16MBA90	1 3/16"-12	1 5/16"-12 UN	41.0	59.7	36.0	41.0	400	
16MFFOR-12MBA90	1 7/16"-12	1 1/16"-12 UN	41.7	58.9	36.0	36.0	400	
16MFFOR-16MBA90	1 7/16"-12	1 5/16"-12 UN	41.7	59.7	36.0	41.0	400	
16MFFOR-20MBA90	1 7/16"-12	1 5/8"-12 UN	44.7	62.2	41.0	50.0	250	
20MFFOR-16MBA90	1 11/16"-12	1 5/16"-12 UN	44.7	62.2	41.0	41.0	250	
20MFFOR-20MBA90	1 11/16"-12	1 5/8"-12 UN	44.5	62.0	41.0	50.0	250	
20MFFOR-24MBA90	1 11/16"-12	1 7/8"-12 UN	48.8	65.8	50.0	55.0	200	
24MFFOR-20MBA90	2"-12	1 5/8"-12 UN	49.0	66.0	50.0	50.0	250	
24MFFOR-24MBA90	2"-12	1 7/8"-12 UN	49.0	66.0	50.0	55.0	250	

INTRODUCTION

BSP ADAPTORS

JIC ADAPTORS

ORFS ADAPTORS

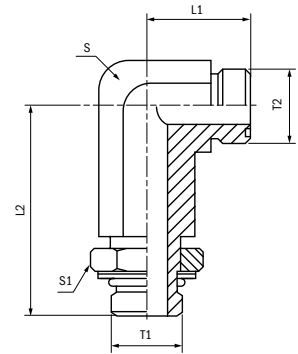
PRESSURE WASH ADAPTORS

QUICK-LOK ADAPTORS



ORFS MFFOR-MBA90 LONG

SAE flat face O-Ring male / male SAE 'O'
Ring boss 90° elbow long version

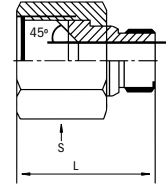


ADAPTOR	THREAD		LENGTH		HEX/FLATS		WORKING PRESSURE	
	REF.	T1	T2	L1	L2	S	S1	WP
ORFS	ORFS	SAE O	mm	mm	mm	mm	bar	
4MFFOR-4MBA90 LONG	1/16"-18	7/16"-20 UNF	21.6	56.6	14.0	17.0	630	
4MFFOR-6MBA90 LONG	1/16"-18	9/16"-18 UNF	23.4	66.3	19.0	19.0	630	
6MFFOR-6MBA90 LONG	1 1/16"-16	9/16"-18 UNF	25.0	66.3	19.0	19.0	630	
6MFFOR-8MBA90 LONG	1 1/16"-16	3/4"-16 UNF	26.4	74.9	19.0	24.0	630	
8MFFOR-8MBA90 LONG	1 3/16"-16	3/4"-16 UNF	28.0	74.9	19.0	24.0	630	
8MFFOR-10MBA90 LONG	1 3/16"-16	7/8"-14 UNF	30.7	89.2	27.0	27.0	400	
10MFFOR-10MBA90 LONG	1"-14	7/8"-14 UNF	33.3	89.2	27.0	27.0	400	
10MFFOR-12MBA90 LONG	1"-14	1 1/16"-12 UN	35.8	100.8	30.0	36.0	400	
12MFFOR-12MBA90 LONG	1 3/16"-12	1 1/16"-12 UN	37.3	100.8	30.0	36.0	400	
12MFFOR-16MBA90 LONG	1 3/16"-12	1 5/16"-12 UN	41.2	114.6	36.0	41.0	400	
16MFFOR-16MBA90 LONG	1 7/16"-12	1 5/16"-12 UN	41.7	114.6	36.0	41.0	400	
16MFFOR-20MBA90 LONG	1 7/16"-12	1 5/8"-12 UN	44.7	126.5	41.0	50.0	250	
20MFFOR-20MBA90 LONG	1 11/16"-12	1 5/8"-12 UN	44.7	126.5	41.0	50.0	250	
24MFFOR-24MBA90 LONG	2"-12	1 7/8"-12 UN	48.8	139.2	48.0	55.0	250	



ORFS MFFOR-FFORX

SAE flat face O-Ring female swivel / male

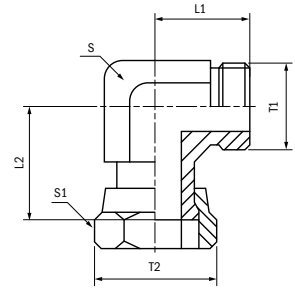


ADAPTOR REF.	THREAD		LENGTH L	HEX/FLATS S	WORKING PRESSURE WP
	T1	T2			
ORFS	ORFS F	ORFS	mm	mm	bar
4MFFOR-4FFORX	9/16"-18	9/16"-18	18.6	17.0	630
4MFFOR-6FFORX	1 1/16"-16	9/16"-18	19.6	22.0	630
4MFFOR-8FFORX	1 3/16"-16	9/16"-18	21.8	24.0	630
4MFFOR-10FFORX	1"-14	9/16"-18	22.9	30.0	400
4MFFOR-12FFORX	1 3/16"-12	9/16"-18	24.9	36.0	400
6MFFOR-4FFORX	9/16"-18	1 1/16"-16	17.8	17.0	630
6MFFOR-6FFORX	1 1/16"-16	1 1/16"-16	20.5	22.0	630
6MFFOR-8FFORX	1 3/16"-16	1 1/16"-16	22.4	24.0	630
6MFFOR-10FFORX	1"-14	1 3/16"-16	24.2	30.0	400
6MFFOR-12FFORX	1 3/16"-12	1 1/16"-16	26.2	36.0	400
6MFFOR-16FFORX	1 7/16"-12	1 1/16"-16	27.6	41.0	400
8MFFOR-10FFORX	1"-14	1 3/16"-16	25.7	30.0	400
8MFFOR-12FFORX	1 3/16"-12	1 3/16"-16	27.7	36.0	400
8MFFOR-16FFORX	1 7/16"-12	1 3/16"-16	29.2	41.0	400
10MFFOR-12FFORX	1 3/16"-12	1"-14	30.4	36.0	400
10MFFOR-16FFORX	1 7/16"-12	1"-14	31.9	41.0	400
12MFFOR-16FFORX	1 7/16"-12	1 3/16"-12	33.0	41.0	400
12MFFOR-20FFORX	1 1 1/16"-12	1 3/16"-12	33.5	50.0	250
16MFFOR-20FFORX	1 1 1/16"-12	1 7/16"-12	38.5	50.0	250
16MFFOR-24FFORX	2"-12	1 7/16"-12	34.0	60.0	250
20MFFOR-24FFORX	2"-12	1 1 1/16"-12	34.0	60.0	250



ORFS MFFOR-FFORX90

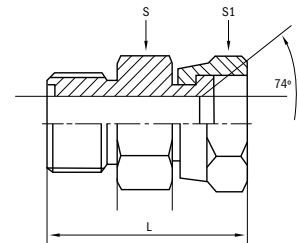
SAE flat face O-Ring male / female swivel 90° elbow



ADAPTOR		THREAD		LENGTH		HEX/FLATS		WORKING PRESSURE
REF.	T1	T2	L1	L2	S	S1	WP	
ORFS	ORFS	ORFS F	mm	mm	mm	mm	bar	
4MFFOR-4FFORX90	3/16"-18	3/16"-18	21.6	26.4	14.0	17.0	630	
6MFFOR-6FFORX90	1/16"-16	1/16"-16	24.9	29.2	19.0	22.0	630	
8MFFOR-8FFORX90	3/16"-16	3/16"-16	28.0	38.0	19.0	24.0	630	
10MFFOR-10FFORX90	1"-14	1"-14	33.3	41.2	27.0	30.0	400	
12MFFOR-12FFORX90	1.3/16"-12	1.3/16"-12	37.5	46.5	30.0	36.0	400	
16MFFOR-16FFORX90	1.7/16"-12	1.7/16"-12	41.7	53.3	36.0	41.0	400	
20MFFOR-20FFORX90	1.1/16"-12	1.1/16"-12	44.7	58.2	41.0	50.0	250	
24MFFOR-24FFORX90	2"-12	2"-12	48.8	61.2	48.0	60.0	250	

ORFS MFFOR-FJX

SAE flat face O-Ring male / female swivel JIC 37°

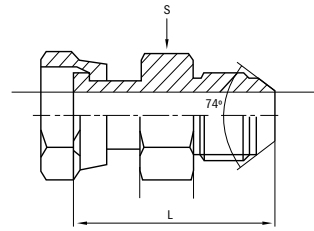


ADAPTOR		THREAD		LENGTH	HEX/FLATS		WORKING PRESSURE
REF.	T1	T2	L	S	S1	WP	
ORFS	ORFS	JIC F	mm	mm	mm	bar	
4MFFOR-4FJX	3/16"-18	7/16"-20	25.7	17.0	14.0	350	
6MFFOR-6FJX	1/16"-16	3/16"-18	30.2	19.0	19.0	350	
8MFFOR-8FJX	3/16"-16	3/4"-16	34.2	22.0	22.0	310	
10MFFOR-10FJX	1"-14	7/8"-14	38.0	27.0	27.0	240	
12MFFOR-12FJX	1.3/16"-12	1.1/16"-12	43.4	32.0	32.0	240	
16MFFOR-16FJX	1.7/16"-12	1.5/16"-12	47.4	41.0	41.0	210	
20MFFOR-20FJX	1.1/16"-12	1.5/8"-12	50.0	46.0	50.0	170	
24MFFOR-24FJX	2"-12	1.7/8"-12	52.0	55.0	60.0	140	



ORFS FFORX-MJ

SAE flat face O-Ring female swivel / male JIC 37°

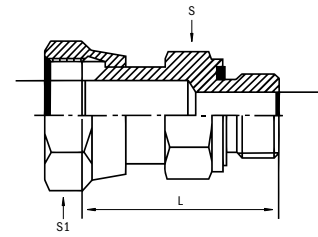


ADAPTOR	THREAD		LENGTH	HEX/FLATS		WORKING PRESSURE
	REF.	T1		T2	L	
ORFS	ORFS F	JIC	mm	mm	mm	bar
4FFORX-4MJ	9/16"-18	7/16"-20	40.1	17.0	17.0	350
6FFORX-6MJ	1 1/16"-16	9/16"-18	42.0	19.0	22.0	350
8FFORX-8MJ	1 3/16"-16	3/4"-16	48.3	22.0	24.0	310
10FFORX-10MJ	1"-14	7/8"-14	57.1	27.0	30.0	240
12FFORX-12MJ	1 3/16"-12	1 1/16"-12	63.5	32.0	36.0	240
16FFORX-16MJ	1 7/16"-12	1 5/16"-12	67.3	41.0	41.0	210
20FFORX-20MJ	1 11/16"-12	1 5/8"-12	73.4	50.0	50.0	170
24FFORX-24MJ	2"-12	1 7/8"-12	71.0	50.0	60.0	140



ORFS FFORX-MBSPPWD

SAE flat face O-Ring female swivel / male BSPP with captive seal

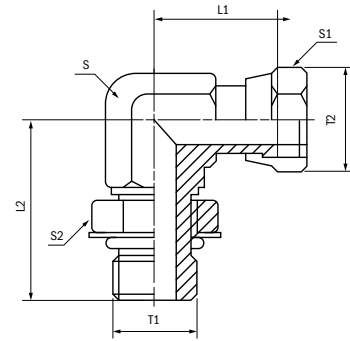


ADAPTOR REF.	THREAD		LENGTH L	HEX/FLATS		WORKING PRESSURE WP
	T1	T2		S	S1	
ORFS	ORFS F	BSPP	mm	mm	mm	bar
4FFORX-2MBSPPWD	3/16"-18	1/8"-28	34.0	14.0	17.0	630
4FFORX-4MBSPPWD	3/16"-18	1/4"-19	38.0	19.0	17.0	630
4FFORX-6MBSPPWD	3/16"-18	3/8"-19	37.8	22.0	17.0	630
6FFORX-4MBSPPWD	11/16"-16	1/4"-19	40.0	19.0	22.0	630
6FFORX-6MBSPPWD	11/16"-16	3/8"-19	40.0	22.0	22.0	630
6FFORX-8MBSPPWD	11/16"-16	1/2"-14	46.0	27.0	22.0	400
8FFORX-4MBSPPWD	13/16"-16	1/4"-19	47.0	22.0	24.0	630
8FFORX-6MBSPPWD	13/16"-16	3/8"-19	47.0	22.0	24.0	630
8FFORX-8MBSPPWD	13/16"-16	1/2"-14	49.0	27.0	24.0	400
8FFORX-12MBSPPWD	13/16"-16	3/4"-14	51.0	32.0	24.0	400
10FFORX-10MBSPPWD	1"-14	5/8"-14	52.0	30.0	30.0	400
10FFORX-12MBSPPWD	1"-14	3/4"-14	54.0	32.0	30.0	400
12FFORX-8MBSPPWD	1.3/16"-12	1/2"-14	55.0	30.0	36.0	400
12FFORX-12MBSPPWD	1.3/16"-12	3/4"-14	57.0	32.0	36.0	400
16FFORX-12MBSPPWD	1.7/16"-12	3/4"-14	66.0	36.0	41.0	400
16FFORX-16MBSPPWD	1.7/16"-12	1"-11	67.0	41.0	41.0	400
20FFORX-16MBSPPWD	1.11/16"-12	1"-11	67.0	41.0	50.0	250
20FFORX-20MBSPPWD	1.11/16"-12	1.1/4"-11	69.0	50.0	50.0	250
24FFORX-24MBSPPWD	2"-12	1.1/2"-11	72.0	55.0	60.0	250



ORFS FFORX-MBA90

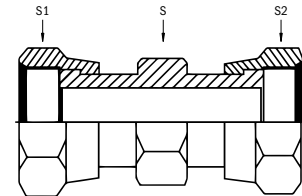
SAE flat face O-Ring female swivel / male SAE 'O' Ring boss 90° elbow



ADAPTOR	THREAD		LENGTH		HEX/FLATS			WORKING PRESSURE	
	REF.	T1	T2	L1	L2	S	S1	S2	WP
ORFS	ORFS F	SAE O	mm	mm	mm	mm	mm	bar	
4FFORX-4MBA90	9/16"-18	7/16"-20 UNF	26.4	32.8	14.0	17.0	17.0	315	
6FFORX-6MBA90	1 1/16"-16	9/16"-18 UNF	31.0	36.8	19.0	22.0	19.0	315	
8FFORX-8MBA90	1 3/16"-16	3/4"-16 UNF	38.0	40.5	19.0	24.0	24.0	315	
10FFORX-10MBA90	1"-14	7/8"-14 UNF	41.2	50.0	27.0	30.0	27.0	250	
12FFORX-12MBA90	1 3/16"-12	1 1/16"-12 UN	46.5	55.0	30.0	36.0	36.0	250	
16FFORX-16MBA90	1 7/16"-12	1 5/16"-12 UN	53.5	59.5	36.0	41.0	41.0	200	
20FFORX-20MBA90	1 11/16"-12	1 5/8"-12 UN	58.2	62.2	41.0	50.0	50.0	160	
24FFORX-24MBA90	2"-12	1 7/8"-12 UN	58.8	66.0	48.0	60.0	55.0	160	

ORFS FFORX-FFORX

SAE flat face O-Ring female swivel / female swivel



ADAPTOR	THREAD		LENGTH	HEX/FLATS		WORKING PRESSURE
	REF.	T1	T2	L	S	S1 & S2
ORFS	ORFS F	ORFS F	mm	mm	mm	bar
4FFORX-4FFORX	9/16"-18	9/16"-18	40.0	17.0	17.0	630
6FFORX-6FFORX	1 1/16"-16	1 1/16"-16	46.0	19.0	22.0	630
8FFORX-8FFORX	1 3/16"-16	1 3/16"-16	53.8	22.0	24.0	630
10FFORX-10FFORX	1"-14	1"-14	61.0	27.0	30.0	400
12FFORX-12FFORX	1 3/16"-12	1 3/16"-12	68.0	32.0	36.0	400
16FFORX-16FFORX	1 7/16"-12	1 7/16"-12	70.0	36.0	41.0	400
20FFORX-20FFORX	1 11/16"-12	1 11/16"-12	76.0	46.0	50.0	250
24FFORX-24FFORX	2"-12	2"-12	80.0	55.0	60.0	250

INTRODUCTION

BSP ADAPTORS

JIC ADAPTORS

ORFS ADAPTORS

PRESSURE WASH ADAPTORS

QUICK-LOK ADAPTORS



ORFS MFFOR-PLUG

SAE flat face O-Ring male plug



ADAPTOR	THREAD	LENGTH	HEX/FLATS	WORKING PRESSURE
REF.	T1	L	S	WP
ORFS	ORFS	mm	mm	bar
4MFFOR-PLUG	9/16"-18	16.7	17.0	630
6MFFOR-PLUG	1 1/16"-16	19.1	19.0	630
8MFFOR-PLUG	1 3/16"-16	21.7	22.0	630
10MFFOR-PLUG	1"-14	25.9	27.0	400
12MFFOR-PLUG	1 3/16"-12	27.4	32.0	400
16MFFOR-PLUG	1 7/16"-12	27.9	41.0	400
20MFFOR-PLUG	1 11/16"-12	27.9	46.0	250
24MFFOR-PLUG	2"-12	27.9	55.0	250

ORFS FFORX-CAP

SAE flat face O-Ring female swivel cap

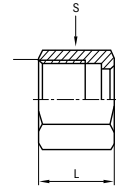


ADAPTOR	THREAD	LENGTH	HEX/FLATS	WORKING PRESSURE
REF.	T1	L	S	WP
ORFS	ORFS F	mm	mm	bar
4FFORX-CAP	9/16"-18	14.8	17.0	630
6FFORX-CAP	1 1/16"-16	17.0	22.0	630
8FFORX-CAP	1 3/16"-16	31.0	24.0	630
10FFORX-CAP	1"-14	23.5	30.0	400
12FFORX-CAP	1 3/16"-12	26.0	36.0	400
16FFORX-CAP	1 7/16"-12	27.8	41.0	400
20FFORX-CAP	1 11/16"-12	27.8	50.0	250
24FFORX-CAP	2"-12	27.8	60.0	250



ORFS MFFOR-NUT

SAE flat face O-Ring nut



ADAPTOR	THREAD	LENGTH	HEX/FLATS	WORKING PRESSURE
REF.	T1	L	S	WP
ORFS	ORFS	mm	mm	bar
4MFFOR-NUT	3/16"-18	14.7	17.0	630
6MFFOR-NUT	1/16"-16	17.0	22.0	630
8MFFOR-NUT	3/16"-16	21.0	24.0	630
10MFFOR-NUT	1"-14	23.5	30.0	400
12MFFOR-NUT	1.3/16"-12	26.5	36.0	400
16MFFOR-NUT	1.7/16"-12	27.8	41.0	400
20MFFOR-NUT	1.11/16"-12	27.8	50.0	250
24MFFOR-NUT	2"-12	27.8	60.0	250







DRIVEN BY POSSIBILITY™

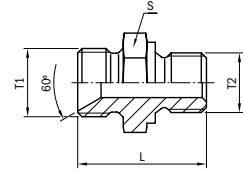
PRESSURE WASH ADAPTORS





MBSPP-MM BRASS

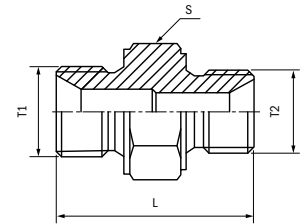
BSP 60° male / male metric



ADAPTOR	THREAD		LENGTH	HEX/FLATS
REF.	T1	T2	L	S
BSP	BSP	METRIC	mm	mm
4MBSPP-22MM BRASS	1/4"-19	M22x1.5	29.0	22.0
6MBSPP-22MM BRASS	3/8"-19	M22x1.5	29.0	22.0
8MBSPP-22MM BRASS	1/2"-14	M22x1.5	29.0	22.0

MM-MM BRASS

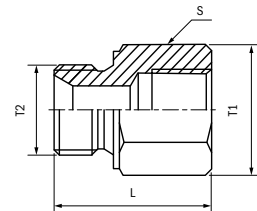
Metric male / male



ADAPTOR	THREAD		LENGTH	HEX/FLATS
REF.	T1	T2	L	S
BSP	METRIC	METRIC	mm	mm
22MM-22MM BRASS	M22x1.5	M22x1.5	54.0	27.0

FBSP-60-MM BRASS

BSP 60° female / male metric



ADAPTOR	THREAD		LENGTH	HEX/FLATS
REF.	T1	T2	L	S
BSP	BSP F	METRIC	mm	mm
2FBSP-22MM BRASS	1/8"-28	M22x1.5	29.0	22.0
4FBSP-22MM BRASS	1/4"-19	M22x1.5	29.0	22.0
6FBSP-22MM BRASS	3/8"-19	M22x1.5	29.0	22.0

INTRODUCTION

BSP ADAPTORS

JIC ADAPTORS

ORFS ADAPTORS

PRESSURE WASH ADAPTORS

QUICK-LOK ADAPTORS







DRIVEN BY POSSIBILITY™

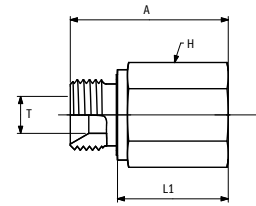
QUICK-LOK ADAPTORS







BSP MBSPP-FQLH

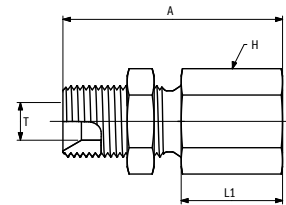
Quick-Lok high adaptor BSP MBSPP to QLH.
Male BSPP thread with captive seal. 60° cone.
DIN 3852-11 form e. ISO 1179-2.





						QLH
T1	T2	A	L1	H	T	REF.
FQLH	BSPP	mm	mm	mm	mm	
4FQLH	G1/4" - 19 BSPP	44.5	32.5	22.0	4.7	4FQLH-4MBSPPCSC
6FQLH	G3/8" - 19 BSPP	44.7	32.7	22.0	8.2	6FQLH-6MBSPPCSC
8FQLH	G1/2" - 14 BSPP	47.0	33.0	27.0	11.0	8FQLH-8MBSPPCSC
12FQLH	G3/4" - 14 BSPP	49.2	33.2	36.0	16.7	12FQLH-12MBSPPCSC
16FQLH	G1" - 11 BSPP	51.0	33.0	41.0	22.2	16FQLH-16MBSPPCSC

BSP MBSPPBKHD-FQLH

Quick-Lok high adaptor BSP MBSPPBKHD to QLH.
Male BSPP thread.
Bulkhead. 60° cone.



						QLH
T1	T2	A	L1	H	T	REF.
FQLH	BSPP	mm	mm	mm	mm	
4FQLH	G1/4" - 19 BSPP	62.0	30.0	19.0	4.7	4FQLH-4MBSPPBKHD
6FQLH	G3/8" - 19 BSPP	62.0	30.0	22.0	8.2	6FQLH-6MBSPPBKHD
8FQLH	G1/2" - 14 BSPP	65.0	30.0	27.0	11.0	8FQLH-8MBSPPBKHD
12FQLH	G3/4" - 14 BSPP	68.0	30.0	36.0	16.7	12FQLH-12MBSPPBKHD
16FQLH	G1" - 11 BSPP	71.0	30.0	41.0	22.2	16FQLH-16MBSPPBKHD

INTRODUCTION

BSP ADAPTORS

JIC ADAPTORS

ORFS ADAPTORS

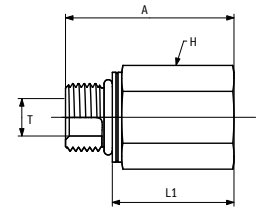
PRESSURE WASH ADAPTORS



QUICK-LOK ADAPTORS



DIN MMOR-FQLH

Quick-Lok high adaptor DIN MMOR to QLH.
Male metric thread with O-Ring. ISO 6149-2, -3.

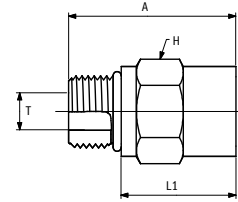




						QLH
T1	T2	A	L1	H	T	REF.
FQLH	METRIC	mm	mm	mm	mm	
4FQLH	M12x1.5	43.5	32.5	19.0	6.0	4FQLH-12MMOR
4FQLH	M14x1.5	43.5	32.5	22.0	7.0	4FQLH-14MMOR
6FQLH	M14x1.5	43.5	32.5	22.0	7.0	6FQLH-14MMOR
6FQLH	M16x1.5	45.0	32.5	22.0	9.0	6FQLH-16MMOR
6FQLH	M18x1.5	45.0	32.5	24.0	10.0	6FQLH-18MMOR
8FQLH	M18x1.5	45.0	32.5	24.0	10.0	8FQLH-18MMOR
8FQLH	M22x1.5	45.5	32.5	27.0	10.0	8FQLH-22MMOR
10FQLH	M22x1.5	45.5	32.5	27.0	14.0	10FQLH-22MMOR
12FQLH	M26x1.5	48.5	32.5	32.0	14.0	12FQLH-26MMOR
12FQLH	M27x2	48.5	32.5	32.0	18.0	12FQLH-27MMOR
16FQLH	M33x2	48.5	32.5	41.0	23.0	16FQLH-33MMOR



SAE MB-FQLH

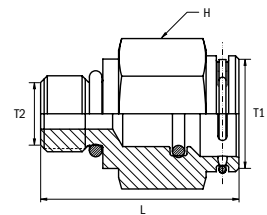
Quick-Lok high adaptor SAE MB "heavy duty" to QLH.
SAE j1926-2. ISO 11926-2.






						QLH
T1	T2	A	L1	H	T	REF.
FQLH	SAE O	mm	mm	mm	mm	
4FQLH	7/16" - 20 UNF	42.0	31.0	19.0	4.0	4FQLH-4MB
4FQLH	9/16" - 18 UNF	42.0	30.0	19.0	6.8	4FQLH-6MBS
6FQLH	7/16" - 20 UNF	42.0	31.0	22.0	4.5	6FQLH-4MB
6FQLH	9/16" - 18 UNF	43.0	31.0	22.0	7.5	6FQLH-6MBS
6FQLH	3/4" - 16 UNF	43.0	29.0	24.0	10.0	6FQLH-8MB
8FQLH	9/16" - 18 UNF	43.5	31.5	24.0	7.5	8FQLH-6MB
8FQLH	3/4" - 16 UNF	44.5	30.5	24.0	10.0	8FQLH-8MBS
8FQLH	7/8" - 14 UNF	46.0	30.0	27.0	12.7	8FQLH-10MB
10FQLH	3/4" - 16 UNF	47.0	33.0	27.0	10.0	10FQLH-8MB
10FQLH	7/8" - 14 UNF	47.0	31.0	27.0	12.7	10FQLH-10MB
10FQLH	1.1/16" - 12 UN	48.0	29.5	32.0	14.3	10FQLH-12MB
12FQLH	7/8" - 14 UNF	48.0	32.0	32.0	12.7	12FQLH-10MB
12FQLH	1.1/16" - 12 UN	50.0	31.5	32.0	15.5	12FQLH-12MB
12FQLH	1.5/16" - 12 UN	50.0	31.5	41.0	19.8	12FQLH-16MB
16FQLH	1.5/16" - 12 UN	50.0	31.5	41.0	21.0	16FQLH-16MB

SAE MB-FQLL

Quick-Lok low adaptor SAE MB "heavy duty" to QLL.
SAE j1926-2. ISO 11926-2.



				QLH
T1	T2	L	H	REF.
FQLL	SAE O	mm	mm	
6FQLL	7/16"-20 UNF	29.0	19.0	6FQLL-4MB
6FQLL	7/8"-14 UNF	41.2	27.0	6FQLL-10MB

INTRODUCTION
 BSP ADAPTORS
 JIC ADAPTORS
 ORFS ADAPTORS
 PRESSURE WASH ADAPTORS
 QUICK-LOK ADAPTORS





DRIVEN BY POSSIBILITY™

CUSTOMER EXPERIENCE TEAM

TEAMGATESCSIR@GATES.COM

+48718814503 FOR ENGLISH
+48718814504 FOR FRENCH
+48718814505 FOR GERMAN
+48718814506 FOR ITALIAN
+48718814507 FOR SPANISH
+48718814502 FOR POLISH