



# TPU BELTS

THERMOPLASTIC POLYURETHANE

# SAME DAY TURNAROUND FOR MISSION CRITICAL DELIVERY

OFFER APPLIES TO ROLL STOCK & WELDED BELTS SHOWN BELOW\*:

## AT PITCH BELTS (METRIC):

CORD TYPE	PITCH	WIDTHS UP TO
Aramid or Steel	AT5	100
	AT10	150
	AT10V	
	AT10VS	
	AT20	
	AT20V	
Steel	AT5V	
	ATL5	150
	ATL10	
	ATL20	

## HTD PITCH BELTS (METRIC):

CORD TYPE	PITCH	WIDTHS UP TO
Aramid	WHTD8	450
Aramid or Steel	HTD5	150
	HTD8	
	HTD14	
Steel	H TL14	170

## STD PITCH BELTS (METRIC):

CORD TYPE	PITCH	WIDTHS UP TO
Aramid or Steel	STD8	100
Steel	STD5	50

## T PITCH BELTS (METRIC):

CORD TYPE	PITCH	WIDTHS UP TO
Aramid	WRAT10	150
	WT10	450
Aramid or Steel	T5	100
	T5V	
	T10	
	T10V	150
	T10VS	
	T20	

## IMPERIAL PITCH BELTS:

CORD TYPE	PITCH	WIDTHS UP TO
Aramid	HV0	600 (6")
	WH	1800 (18")
Aramid or Steel	XL	200 (2")
	F8	400 (4")
	F12	
	L	
	H	
	HV	
	XH	
Steel	FL8	
	FL12	
	FL8 - High Flex	600 (6")
	FL12 - High Flex	
	F13	
	F19	

## AVAILABLE IN:

- Standard (Steel or Aramid)
- Nylon Tooth
- Nylon Back
- Heavy Back
- Nylon Tooth & Back
- Nylon Tooth - Heavy Back
- High Flex
- High Flex - Nylon Tooth
- High Flex - Nylon Tooth & Back
- High Flex - FDA Approved Material
- Stainless Steel Cord
- Stainless Steel Cord - FDA Approved Material
- FDA Approved Material
- FDA Approved Material - Heavy Back
- Anti-Static Coating Tooth & Back
- 85 Durometer Urethane - Nylon Tooth
- 85 Durometer Urethane - Heavy Back



## ORDERS PLACED BY NOON WILL SHIP BY END OF DAY



Roll Stock Belts



Profiles

## CONTACT US AT:

P: (603) 890-1515

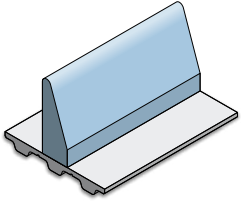
P: (800) 394-4844

E: [contact@gates.com](mailto:contact@gates.com)

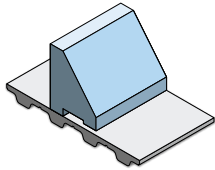
# QUICK SHIP PROGRAM

## 7-DAY TURNAROUND ON COMMON PROFILES

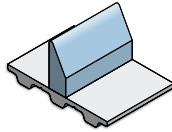
OFFER APPLIES TO PROFILES SHOWN BELOW\*



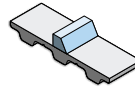
**AN1004**



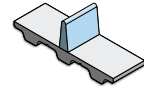
**AN1008**



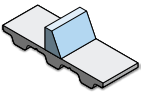
**AN1012**



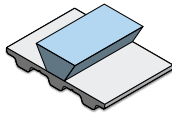
**AN1014**



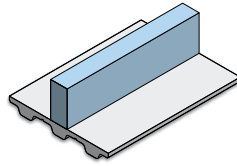
**AN1018**



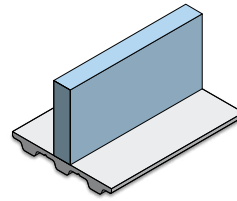
**AN1027**



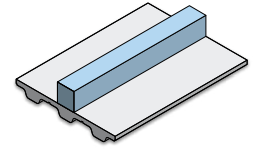
**AN1034**



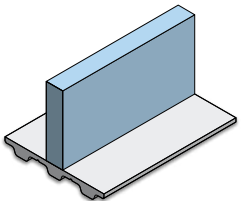
**RC1001**



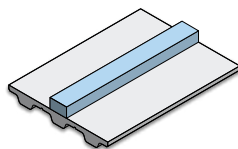
**RC1004**



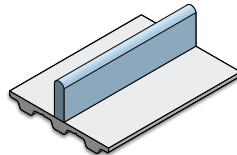
**RC1007**



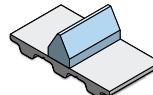
**RC1009**



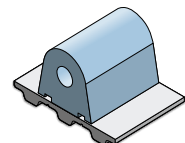
**RC1042**



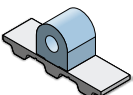
**RT1007**



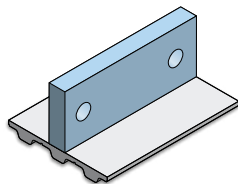
**SP1011**



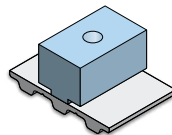
**SP1013**



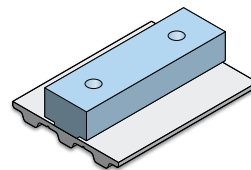
**SP1016**



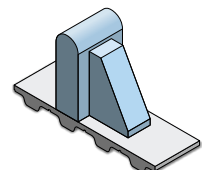
**SP1051**



**SP1056**



**SP1089**



**SP1219**