



TPU BELTS

THERMOPLASTIC POLYURETHANE

GATES TPU

TARACX BACKINGS

THERMOPLASTIC POLYURETHANE BACKINGS FOR SYNCHRONIZED CONVEYING

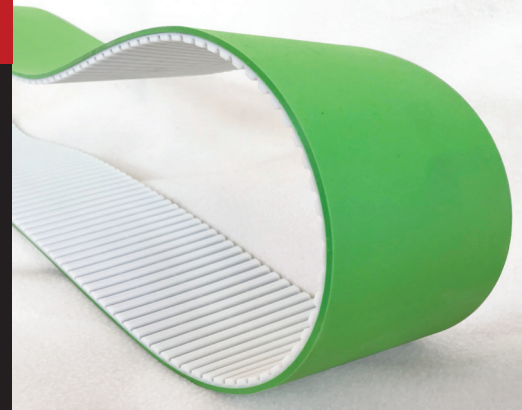
Our advancements and expertise in material science, design engineering and process technologies allow Gates to develop a range of thermoplastic polyurethane (TPU) backings for various synchronized conveying applications.

Varied hardness specifications allow Taracx backings to accommodate a wide range of transportation requirements. Taracx backings are welded to the back of our TPU timing belt creating extreme cohesion between belt and backing material.

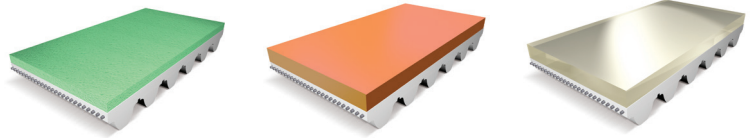
Taracx is a truly endless thermoplastic backing — without a joint — allowing the belt to function in any direction, including reverse transportation applications.

FEATURES + BENEFITS

- Ideal for a wide range of conveying applications
- Extreme cohesion bond to the base belt
- 3 Taracx Variations: 50, 60, and 85° ShoreA
- FDA/EU approval for Taracx 60 and 85
- Thickness Variations: 2mm & 3mm
- Truly endless backing allows bi-directional use
- Long-lasting thermoplastic backing
 - Durable and cut resistant
 - Oil. Chemical and water resistant



TARACX BACKINGS



TECHNICAL DATA

PRODUCT PROPERTIES	INTERN. STANDARD	TARACX 50	TARACX 60	TARACX 85
Hardness	ISO 7619-1	50 Shore A	60 Shore A	85 Shore A
Thickness		2mm	2mm	2mm
		3mm	3mm	3mm
Color		Green	Orange	Clear
Properties		Soft, excellent friction, high abrasion resistance, insoluble in water	Soft, excellent friction, high abrasion resistance, insoluble in water	Soft, excellent friction, high abrasion resistance, insoluble in water
Density	ISO 1183	1,18 g/cm ³	1,07 g/cm ³	1,12 g/cm ³
Temperature-Range		-30/+70°C	-30/+80°C	-30/+80°C
Minimum Pulley Diameter		40 mm	40 mm	60 mm
		60 mm	60 mm	90 mm
Static Coefficient of Friction*		2,41	2,32	1,1
Kinetic Coefficient of Friction*		1,49	0,92	0,83
Abrasion Resistance Rating**	ASTM D5963-04-A	8	7	9
FDA Conformity	24220	No	Yes	Yes
EU Food Approval	21798	No	Yes	Yes
Antistatic	24220	No	No	No
Oil & Fat Resistance***	21798	E	E	E
Chemical Resistance***	24220	P	G	G
Flammability	497210	No	No	No

* against Aluminum test sled

** 10 = very high resistance

*** E=Excellent, G=Good, P=Poor